

# ES3610/11 VN-GLIMPSE RGB ADAPTER

## QUICK-START USER GUIDE



### Before You Do Anything Else...

*Please take a couple of minutes to read this leaflet. It provides essential information to help you to start using the VN-GLIMPSE RGB ADAPTER as quickly as possible. If you need more details please view the full User Guide included on the Software Disc.*

## Checking the Contents of the Box

Before using or installing this unit check that the following items have been supplied:

- **VN-GLIMPSE RGB ADAPTER**
- **12V Power Supply Unit (PSU)**
- **Mains Power Cords (2 off)**  
*3-pin plug version – for USA customers*  
*unterminated version – for Europe and elsewhere (see Plug Wiring Details below)*
- **Mouse/Keyboard Cable** (2 metre PS/2 to PS/2) (2 off)
- **Digital Monitor Cable\*** (2 metre DVI-D to DVI-D)
- **Analog Monitor Cable\*** (2 metre 15-pin HD-type to DVI-A)
- **DVI-A to 15-pin HD-type Adapter**
- **Clip-on Ferrite\*** (for supplied Monitor cable – see Important Note below)
- **Software Disc**


If any items are missing or damaged please contact your supplier.

**\* IMPORTANT NOTE:** Whether you are using the Digital or Analog Monitor Cable, it must be fitted with the Clip-on Ferrite. Position the ferrite nearest to the end of the cable that connects to the **DVI- I IN** connector on the VN-GLIMPSE RGB ADAPTER.

Refer to the connection diagrams on pages 4 & 5.

## Plug Wiring Details

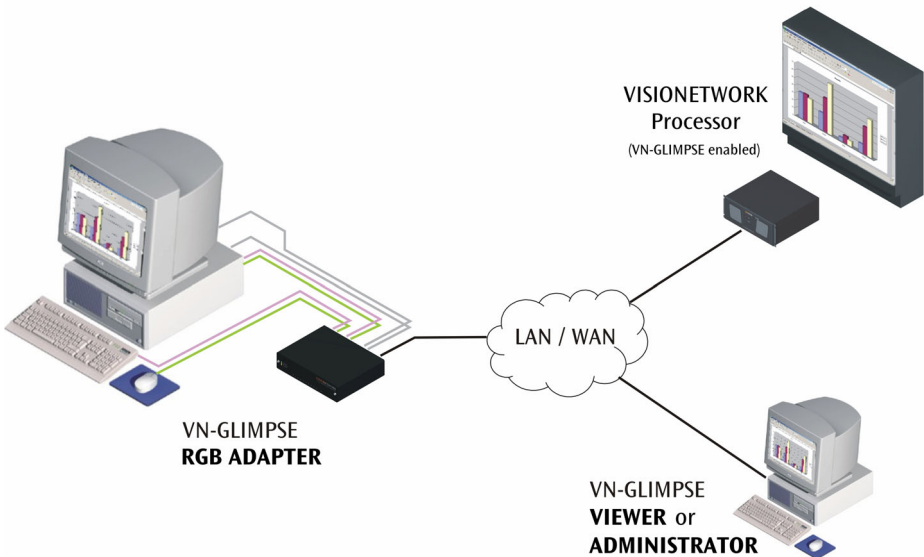
The wires of both mains power cords (supplied with each RGB ADAPTER) are color-coded as shown in the table below; be sure to connect your plug in accordance with the following guidelines:

Connect the wire colored...	to the plug terminal identified with...
<b>Brown</b>	'L' or 'Live' or 'Line' (or colored red or brown)
<b>Blue</b>	'N' or 'Neutral' (or colored blue or black)
<b>Green &amp; Yellow</b>	'E ' or 'E' or 'Earth' or 'Ground' (or colored green or green & yellow)
	<b>WARNING</b> — If you are unsure of the connections, or if the markings in your plug do not match those given above, CONSULT A QUALIFIED ELECTRICIAN.

**NOTE:** The PSU is double-insulated and does not require an earth/ground connection. However, the earth cable of the mains lead must be connected in the plug.

## System Basics

The following diagram shows the basic system and interconnections for using a VN-GLIMPSE RGB ADAPTER.



The VN-GLIMPSE RGB ADAPTER captures the source graphics and streams this data onto a network. The resulting VN-GLIMPSE source can then be viewed using:

- a VN-GLIMPSE enabled **VISIONNETWORK Processor**, or
- the **VN-GLIMPSE VIEWER** application, which can be installed on any computer on the same network, or
- the **VN-GLIMPSE ADMINISTRATOR** application.

By default, the RGB ADAPTER streams the source data using TCP Unicast protocol. This enables the source to be viewed by one client at a time and also allows the client to have remote keyboard and mouse control of the source/host computer.

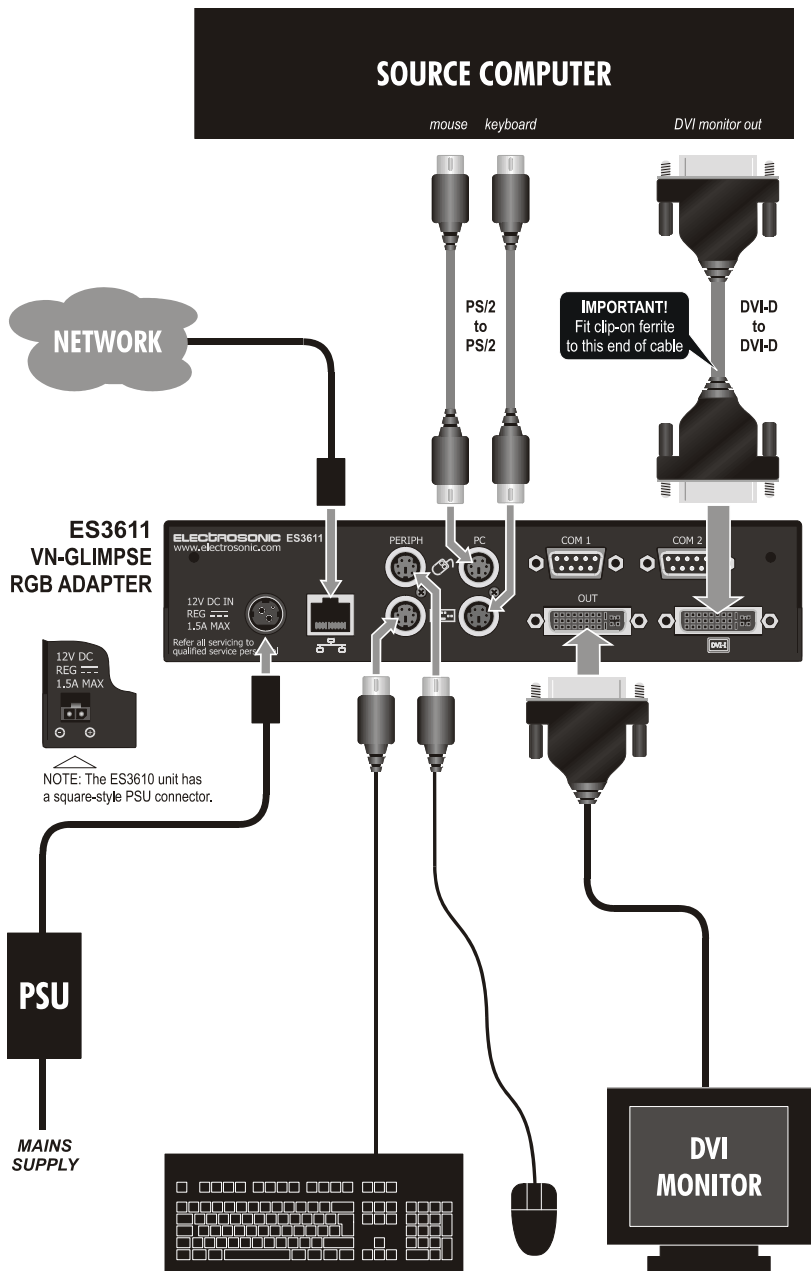
The RGB ADAPTER can also be configured to operate using UDP Multicast protocol. This enables the source to be viewed simultaneously by multiple clients. However, remote keyboard and mouse control is not possible in this mode.

## Power-up Procedure

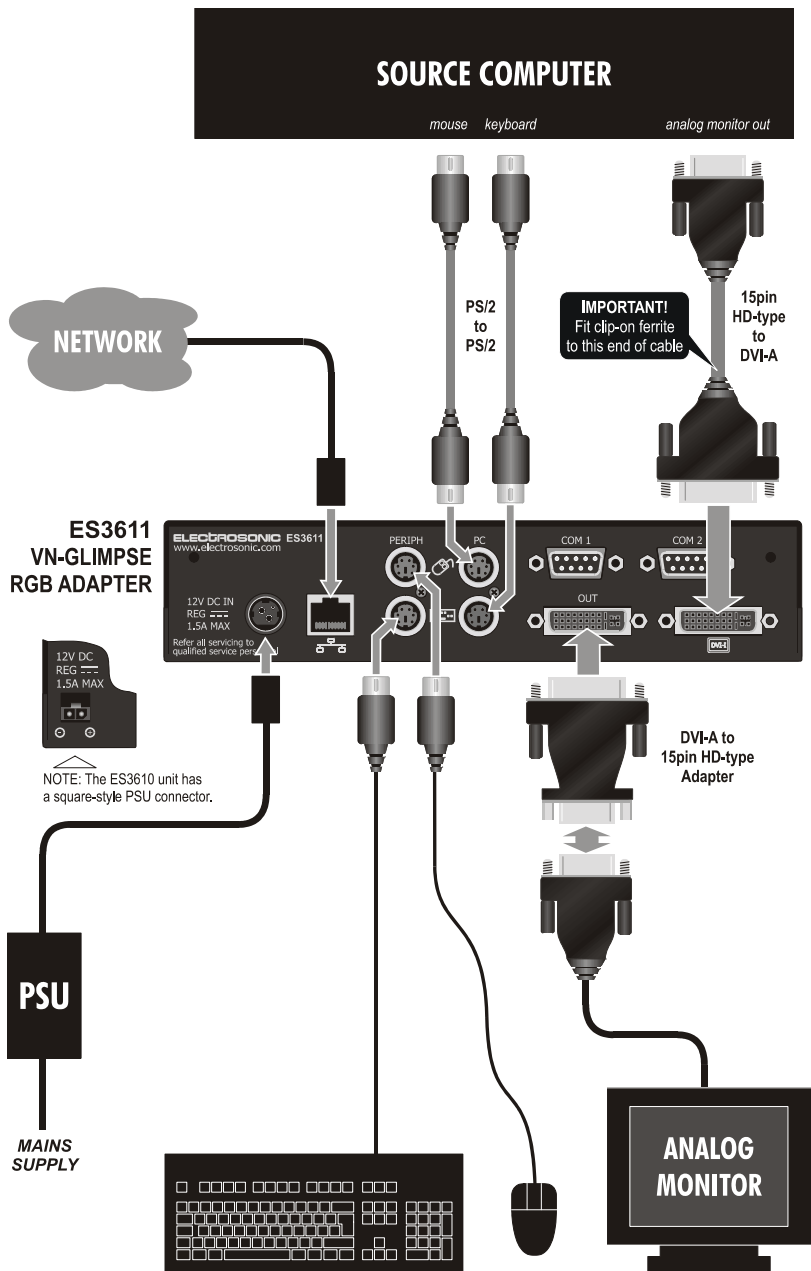
You must always ensure that the RGB ADAPTER is powered-up at the same time as the source computer or slightly before.

Powering the RGB ADAPTER *after* the source computer may result in the source computer not correctly detecting the mouse, keyboard and/or monitor.

Connection Diagram (Digital Source)



# Connection Diagram (Analog Source)



## Installing the Software

The Software Disc contains the full User Guide (in Acrobat PDF) together with the following software applications:

- **VN-GLIMPSE Setup Utility**  
used to configure the ADAPTER network parameters. This utility can be installed either on a separate computer/laptop or on the source computer.
- **VN-GLIMPSE VIEWER**  
used to view a VN-GLIMPSE source (TCP Unicast only) on a remote computer. It can view any VN-GLIMPSE sources on the same network, whether provided by the RGB ADAPTER(s) or VN-GLIMPSE SERVER(s).
- **VN-GLIMPSE ADMINISTRATOR**  
used to view all VN-GLIMPSE sources (both TCP Unicast and UDP Multicast) and manage the configuration of RGB ADAPTERS and VN-GLIMPSE SERVERS on a network.

A disc browser should run automatically when the Software Disc is inserted into a CD-ROM drive. Simply follow the on-screen instructions to install the software applications or view the User Guide.

**HINT:** *If the browser does not start for any reason, start it manually by running the **setup.exe** file located on the root of the disc.*

## Computer Specification

The following table gives the minimum and recommended computer specification for installing and using the VN-GLIMPSE VIEWER and ADMINISTRATOR applications:

	Minimum	Recommended
Operating System*	Windows NT4 (SP6)	Windows 2000, XP
Processor	Any processor with MMX instruction set	Pentium 3 or higher
Memory (RAM)	64MB	128MB
Hard Disk Free Space	1MB	>1MB
Graphics	1024x768, 65K colors (16-bit)	1024x768, 16.7M colors (32-bit)
Network Card	Ethernet 10BASE-T	Ethernet 100BASE-T

\* Direct X (v9 or above) is required. Direct X is included on the Software Disc or can be downloaded from the Microsoft® web site.

## Using the VN-GLIMPSE Setup Utility

### Setting the IP Address

The IP Address of the VN-GLIMPSE RGB ADAPTER must be set within the range of valid addresses for the network and must not be in use by another network device. It also supports DHCP networks. Consult the network administrator for advice on which address to use or if DHCP should be used.

The IP Address can only be changed using the VN-GLIMPSE Setup Utility provided on the Software Disc. It is recommended that the computer running this utility is initially connected directly to the ADAPTER using an Ethernet crossover patch cable. Once the address is set, you can then safely connect the ADAPTER directly to the network.

**1** Run the Setup Utility. This will detect the ADAPTER and display its IP Address...

**2** Double-click the IP Address

**3** Click **Network Settings**

**4** Enter the IP Address and Subnet Mask or select DHCP

**5** Click **Apply**

**6** When prompted, click **Yes** to reboot the ADAPTER

**HINT:** To start using the RGB ADAPTER only the IP Address and Subnet Mask need to be specified. Refer to the full User Guide for details on other network settings.

## Understanding VN-GLIMPSE Performance

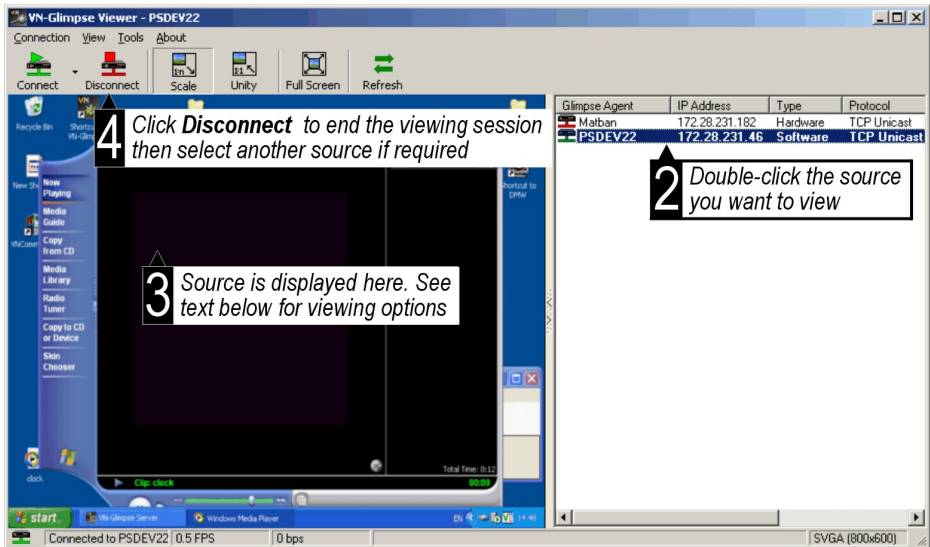
In an ideal VN-GLIMPSE system, the source seen at the viewing station should be virtually indistinguishable from the original source. However, in extreme circumstances, you may notice some reduction in refresh rate or increase in latency.

If you experience problems of this nature, please refer to the section entitled 'Understanding VN-GLIMPSE Performance' in the full User Guide.

# Using the VN-GLIMPSE VIEWER

## Connecting and Disconnecting a Source

**1** Run the VN-GLIMPSE VIEWER. This will detect all VN-GLIMPSE sources and list them in the right-hand panel. To refresh the list at any time, click the **Refresh** button



## Viewing Options

The selected source will appear in the left-hand panel. By default this will be scaled to fit the available viewing space. Click the **Unity** button to show the source at its native resolution. Scroll bars will appear allowing you to select which part of the source frame you want to view. Click **Full Screen** to maximize the display area.

## Remote Keyboard/Mouse Control

With **Mouse & Keyboard** option enabled in the **Tools** Menu, click in the source window to take control of the source computer – a red border will appear around the source window while a control session is active.

Press **Ctrl+F1** to end the control session (or wait for automatic timeout period).  
Press **Ctrl+F2** to access a menu of special key functions (e.g. the Windows key).

To change the default hot keys or timeout settings choose **Mouse/Keyboard Options** from the **Tools** menu.