

DP to HDMI 4K PLUS Adapters • Installation Guide

The Extron DP to HDMI 4K PLUS adapter, pigtail, and cable are one-way DisplayPort adapters that allow conversion and transmission of digital signals from any DisplayPort enabled source to an HDMI sink. The adapters support resolutions up to 4096x2160 at 60 Hz 4:4:4, with EDID and HDCP information passed through between the source and the display.

NOTES:

- The cables are unidirectional and not intended to convert an HDMI source to output a DisplayPort signal.
- The cables must be used directly at the DisplayPort source. Do not use additional cables or adapters between the source output and the DP end of the cable.



(DPM-HDF 4K PLUS)

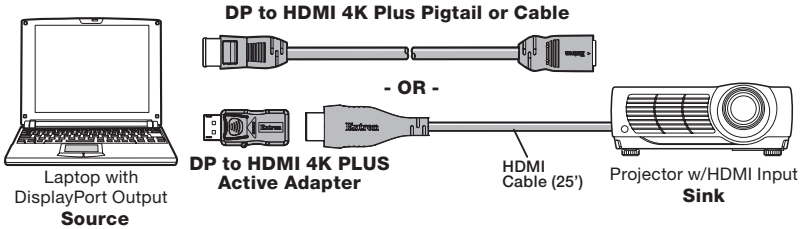


(DPM-HDF/0.5 4K PLUS)



(DPM-HDF/6 4K PLUS)

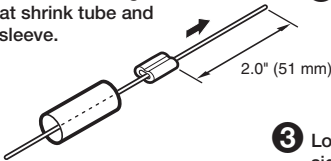
Application Diagram



LockIt Cable Adapter Tether

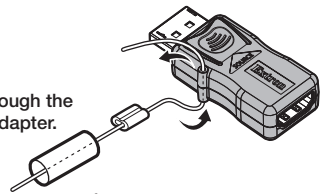
To prevent the adapter from being lost or stolen, attach an optional LockIt Cable Adapter Tether (available at www.extron.com) to link the cable and adapter together, as follows:

- 1 Thread the wire through the heat shrink tube and metal sleeve.

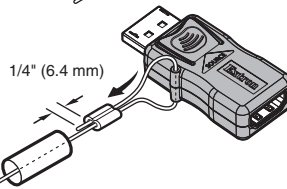


- 2 Leave 2 inches (51 mm) of free wire.

- 3 Loop the wire through the side ring of the Adapter.

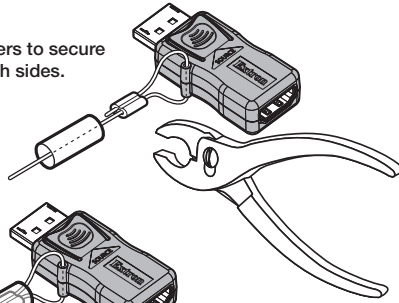


- 4 Thread the wire back through the metal sleeve and tighten the wire allowing about 1/4 inch (6.4 mm) of the short end of the cable to extend past the metal sleeve.

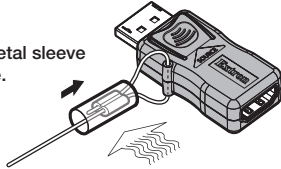


DP to HDMI 4K PLUS Adapters • Installation Guide (Cont.)

- 5 Crimp the metal loop with a pair of pliers to secure the wire in place. Be sure to crimp both sides.

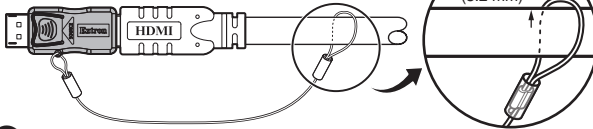


- 6 Slide the tube over the metal sleeve and heat shrink it in place.



- 7 Use a heat gun to securely fasten the heat shrink tube over the metal sleeve.

- 8 Repeat steps 1 through 7 to secure the other end of the wire to a cable.



- 9 To avoid damaging the cable, allow about 1/8 inch (3.2 mm) of space between the wire and the cable.

- 10 Once secured, connect the adapter to the source.

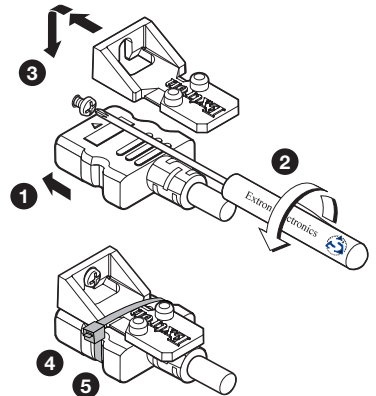
LockIt Lacing Bracket

Use the LockIt Lacing Bracket to securely fasten an HDMI cable to a device as follows:

- 1 Plug the HDMI cable into the rear panel HDMI port.
- 2 Loosen the HDMI connection mounting screw from the panel, enough to allow the LockIt lacing bracket to be placed over it. The screw does not need to be removed.
- 3 Place the LockIt lacing bracket on the screw and against the HDMI connector. Then, tighten the screw to secure the bracket.

ATTENTION:

- Do not overtighten the HDMI connector mounting screw. The shield it fastens to is very thin and can easily be stripped.
- Ne serrez pas trop la vis de montage du connecteur HDMI. Le blindage auquel elle est attachée est très fin et peut facilement être dénudé.



- 4 Loosely place the included tie wrap around the HDMI connector and the LockIt lacing bracket as shown.
- 5 While holding the connector securely against the lacing bracket, use pliers or similar tool to tighten the tie wrap. Then, remove any excess length.