

## VCM 200 D • Installation Guide

This guide provides instructions for an experienced installer to install an Extron VCM 200 D Remote Volume Controller.

The VCM 200 D is a remote volume/mute controller with a 10k ohm potentiometer. It is designed to work solely with any Extron amplifier product with a remote volume control port, such as the MPA 152 Plus or MPA 601 Mini Power Amplifiers. The VCM 200 D is backwards compatible, able to control existing amplifiers and preamplifiers as well as new amplifiers and preamplifiers.



VCM 200 D

**NOTE:** Models of the VCM 200 D with an E number before E30472 are not compatible with newer amplifier models. The E number is located next to the device serial number.

The VCM 200 D is shipped assembled with a black faceplate and knob, and mounts into a mud ring (supplied) or a junction box (not supplied) and is finished by a decorator-style trim plate. A white trim, bezel, and knob are also included.

### NOTES:

- Check that the installation meets the local and state regulatory requirements, including building, electrical, and safety codes, and UL and ADA accessibility requirements.
- For more information on safety guidelines, regulatory compliances, EMI/EMF compatibility, accessibility, and related topics, see the [Extron Safety and Regulatory Compliance Guide](#) on the Extron website.
- For product specifications visit [www.extron.com](http://www.extron.com).

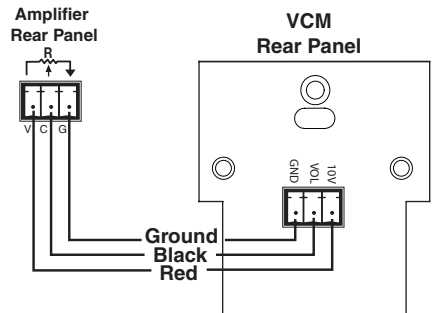
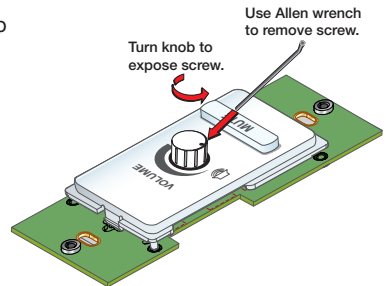
## Installation

1. If the installation requires a white faceplate and knob instead of black, change the faceplate and knob:
  - a. Turn the adjustment knob to its lowest setting and, using the supplied hex key, turn counter-clockwise to loosen the hex screw and remove the knob (see image at right).
  - b. Turn the device over, press the two tabs on the underside, and push the faceplate away.
  - c. Snap in the desired faceplate and install the matching knob. Secure it in place by turning the hex screw clockwise to tighten it.
2. Connect the cables from the audio source (amplifier) location to the rear of the VCM 200 D as shown:
 

**GND** = ground

**VOL** = volume and mute control with DC voltage. The range is 0 to 10 V, where 0 V is mute and 0 V is maximum volume.

**10V** = 10 VDC reference voltage
3. Mount the cabled device and attach the decorator-style trim plate.



**NOTE:** Control signal ground pins may be labels as  $\frac{1}{2}$ , GND, or G. The wiring and function are the same, whichever way your product is labeled.

# VCM 200 D • Installation Guide (Continued)

## Operation

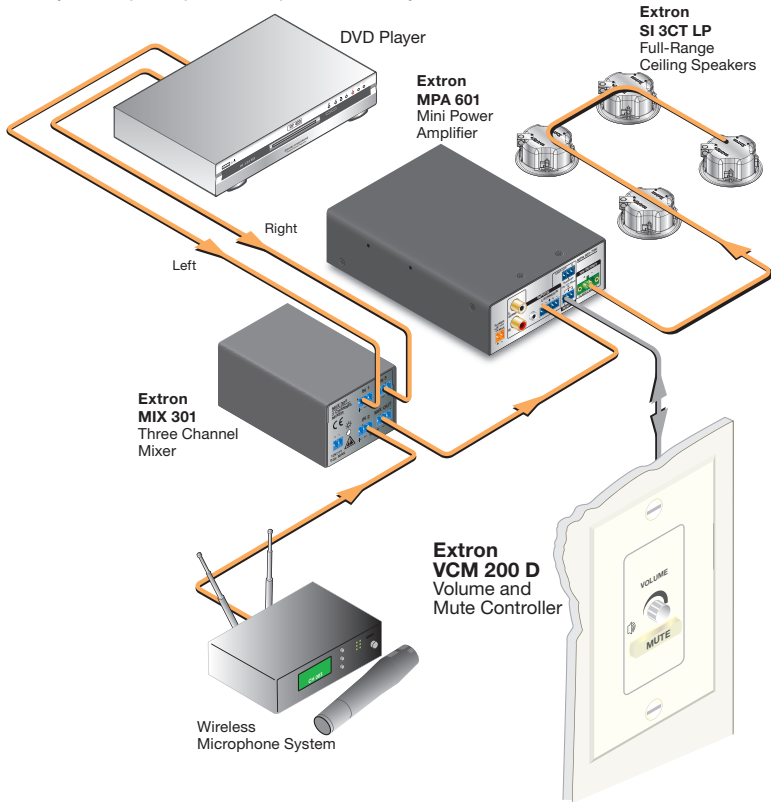
The **Mute** button toggles between mute and unmute. It lights bright red to indicate mute, and dim white to indicate unmute.

Turn the **Volume** knob clockwise to increase the volume, and counterclockwise to decrease the volume.

## Audio Level Setting Procedure

To set the system level to not exceed the maximum volume:

1. Reduce the power amplifier volume to minimum.
2. Turn the **Volume** knob clockwise on the VCM 200 to the maximum position.
3. Slowly turn up the power amplifier to the system volume desired.



### ATTENTION:

- Install into a UL Listed outlet/junction box with the provided faceplate or a UL Listed faceplate.
- Installer dans une prise de courant ou un boîtier de raccordement certifié(e) UL avec le panneau avant fourni ou un panneau avant certifié UL.
- The installation shall be in accordance with the applicable provisions of the National Electrical Code ANSI/NFPA 70, Article 725 and Canadian Electrical Code, Part 1, Section 16.
- Cette installation doit toujours être conforme aux dispositions applicables du Code américain de l'électricité (National Electrical Code) ANSI/NFPA 70, article 725, et du Code canadien de l'électricité, partie 1, section 16.