

October 2021

## Using an H.264 Extron SME Encoder to Stream to Twitch



The following notes provide guidance on setting up an Extron SME Encoder for publishing live streams to Twitch, a third-party service. For more information, please call your Extron Application Engineer.

### Extron Products Affected:

SME 211	60-1763-01
---------	------------

---

## SPECIAL NOTES

---

Streaming to third party services requires a user to have an account with those services. Accounts with third party providers are the responsibility of those maintaining the stream and its content.

To configure the Encoder for RTMP Push streaming to Twitch:

1. Open the WebUI for the SME 211
2. Navigate Configuration>Encoding & Settings
3. Drop the Encoder settings field:

Resolution: 1920X1080

Framerate: 30,50,60

Video Bitrate: 6000 kbps

Rate Control: CBR/VBR

4. Open Advanced Settings:

GOP: 30

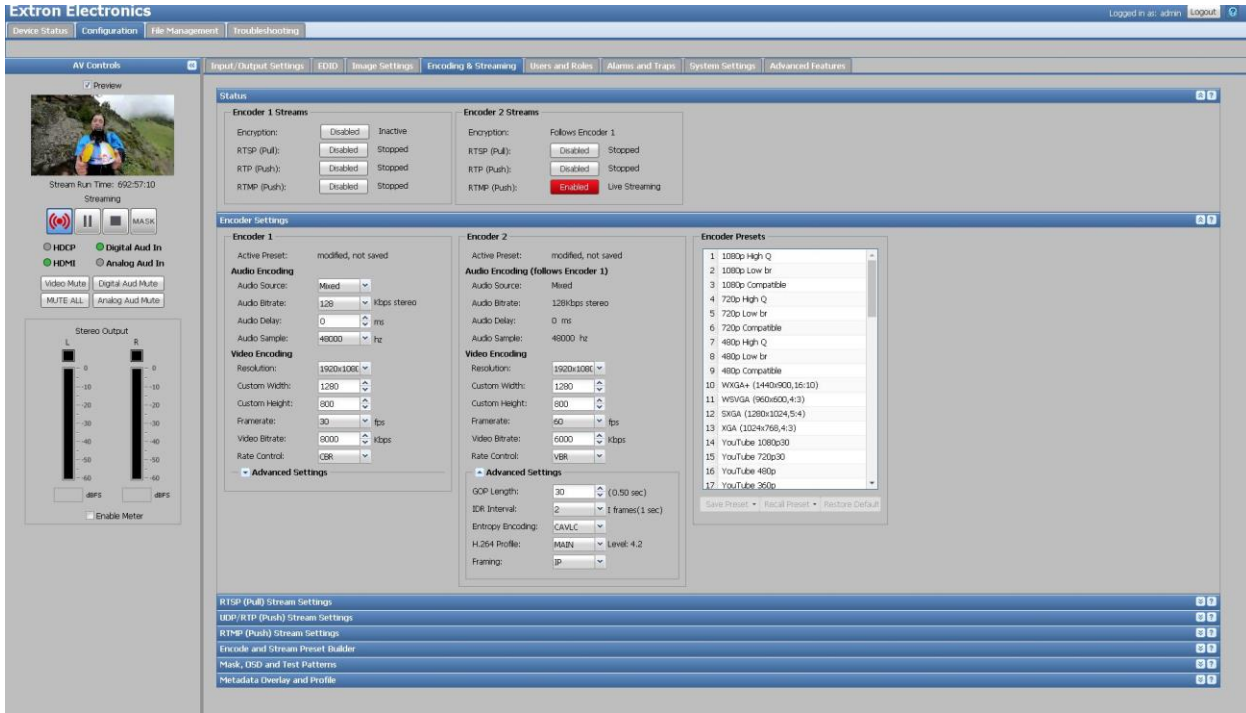
IDR: 2

Entropy: CAVLC

Profile: Main

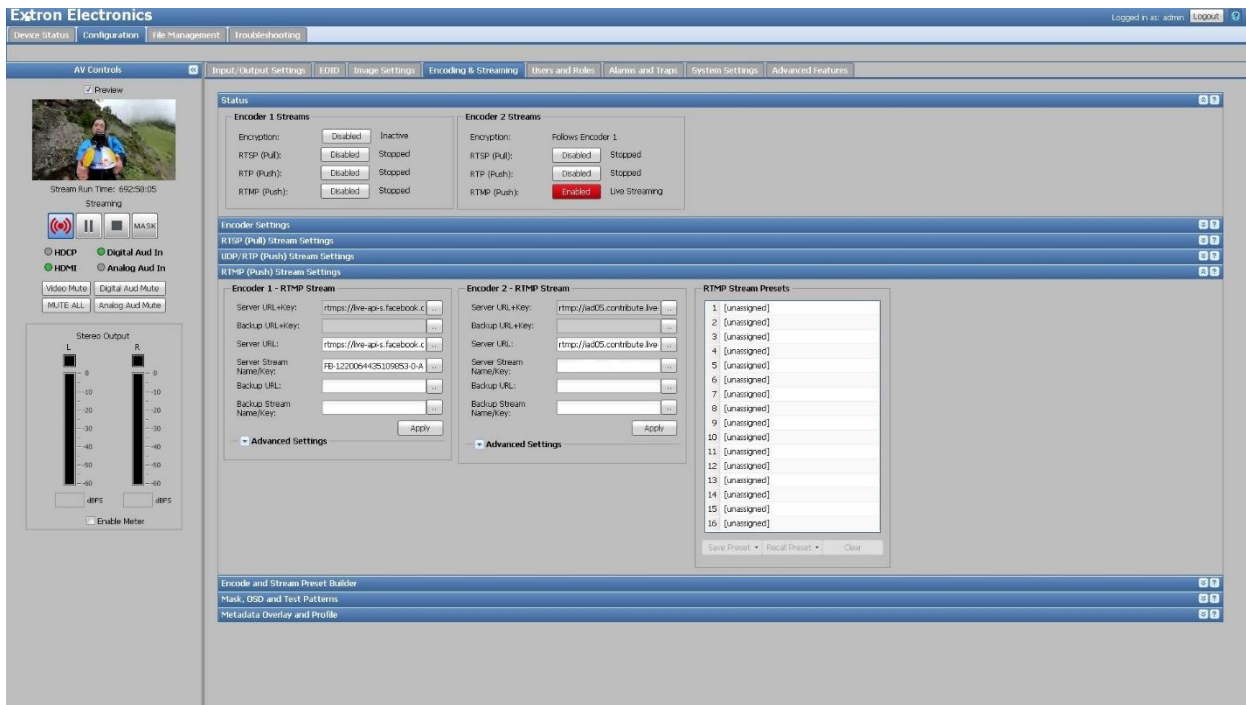
Framing: IP

5. Note in the Capture below settings on Encode 2:



6. Close the Encoder Settings drop down.

7. Open the RTMP settings drop down:



8. Note the Encode 2 Settings in the capture above.

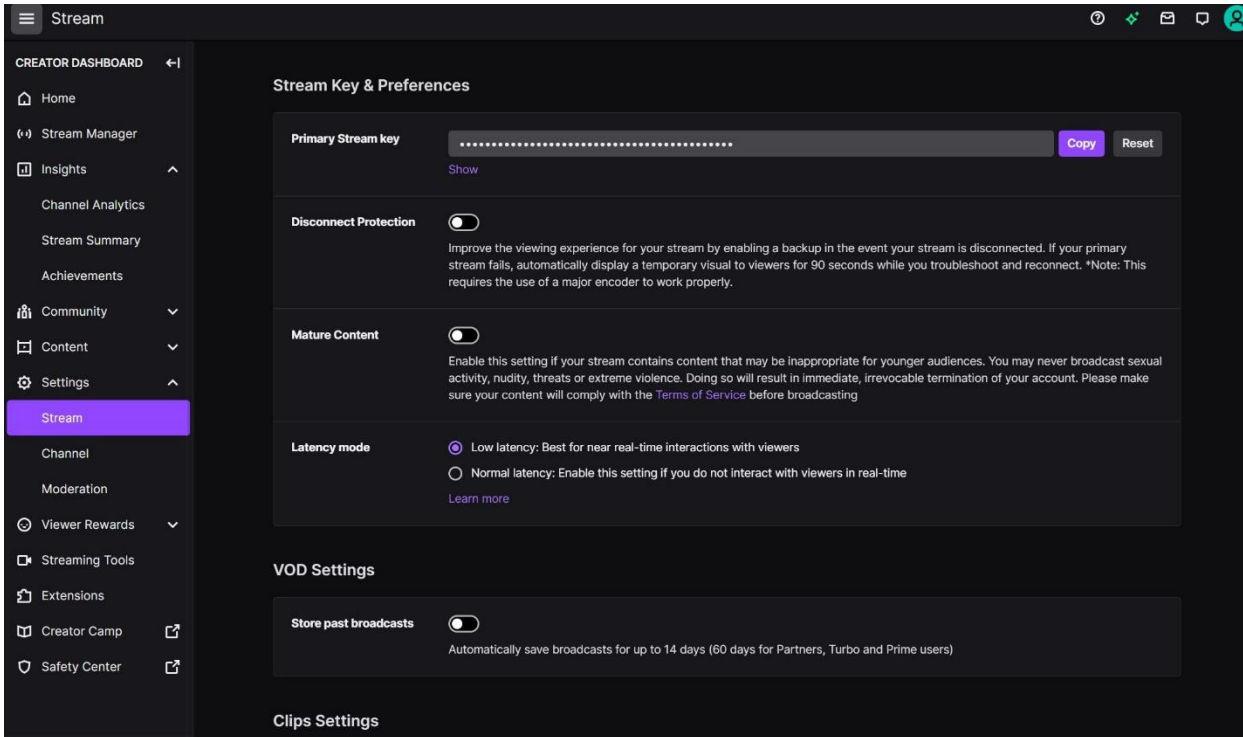
a. You will need to enter the Server URL using the information from Twitch at this link: <https://stream.twitch.tv/ingests/>

i. Twitch checks your IP and finds the best reflector for your location.

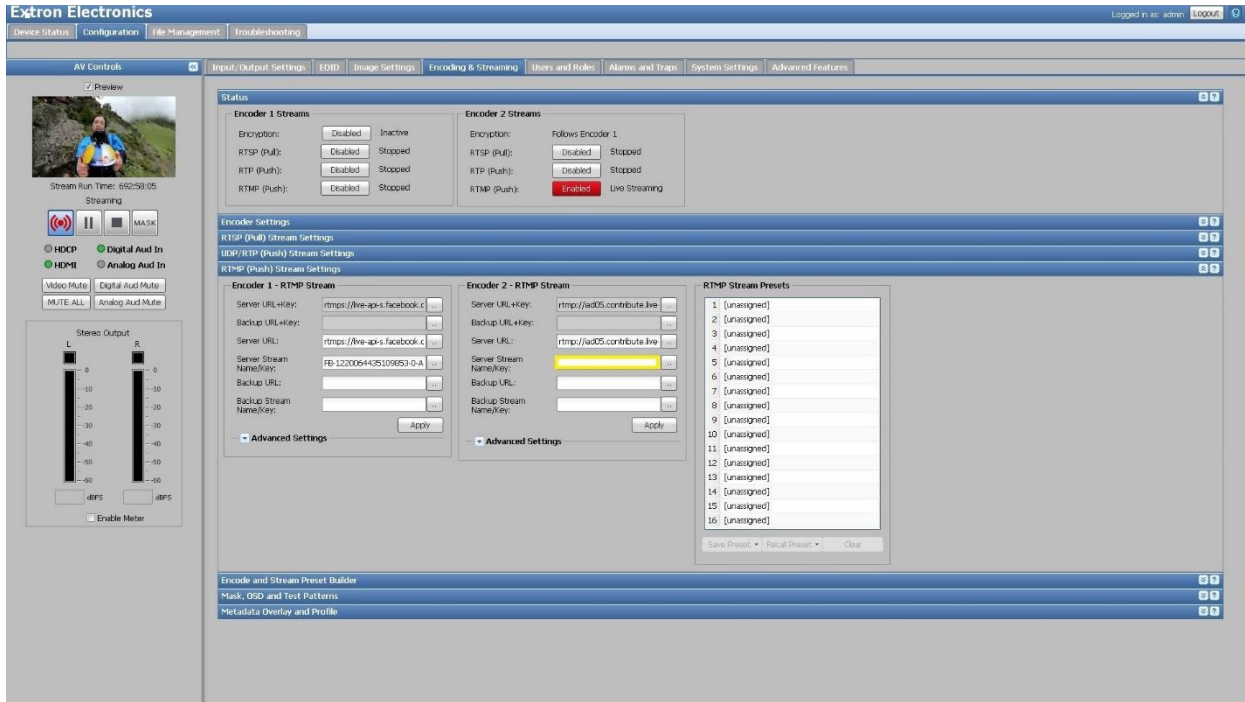
9. Copy and paste your chosen link into the server URL. In the example below remove the highlighted information.

rtmp://atl.contribute.live-video.net/app/{stream\_key}

10. Log into your Twitch account and navigate to Settings>Stream
11. Where the screen shows Primary Stream Key, click “Copy” as shown:



12. Then, navigate back to the SME WebUI and paste the copied data in the Server Stream key field.



13. Ensure the RTMP Encode is enabled.

14. Enable the Main Stream Control.