

This Technical Application Note is intended to assist you in configuring Extron Streaming Media equipment for utilizing 802.1X network security features.

Updated: May 2021

Extron Products Affected:

SMP Products	Firmware Versions
• SMP 300 Series	3.02 or greater
• SMP 111	3.01.0001 or greater

BEFORE YOU START

Before beginning, ensure that your network supports 802.1X security. More information about the 802.1X technology is provided [HERE](#), in the white paper entitled "802. 1X Primer". An Extron Insider account is required to access the white paper.

Extron uses the **Toolbelt** software to enable and configure the 802.1X protocol on all compatible Extron products. You will need to download the Toolbelt software version 2.10.0 (or greater) using your Extron Insider account from <https://www.extron.com/product/software/toolbelt>.

After you have downloaded Toolbelt, you must successfully install the application.

BACKGROUND – WHAT IS 802.1X?

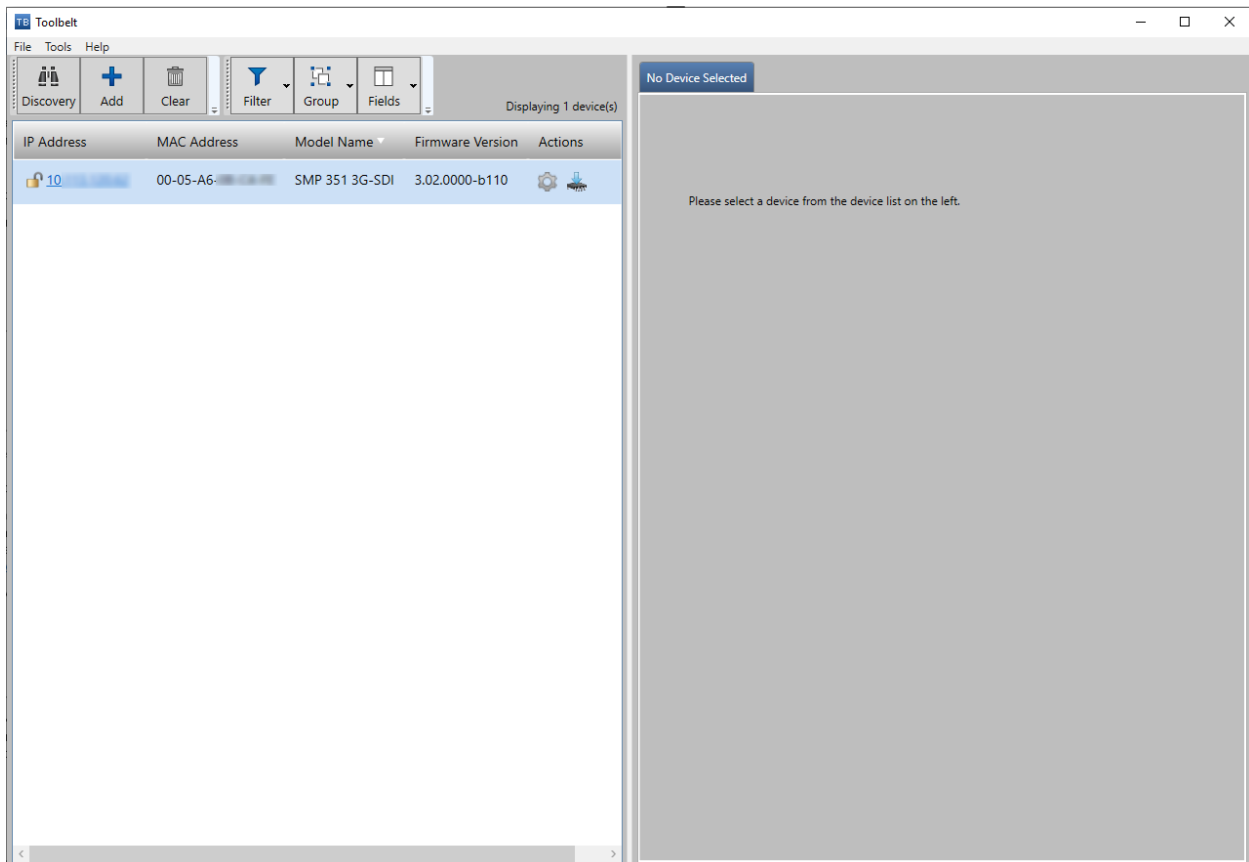
802.1X is the IEEE standard for port-based network access control. 802.1X allows a network administrator to ensure secure communication with a common infrastructure using certificates from a server referred to as an authenticator server.

GETTING STARTED

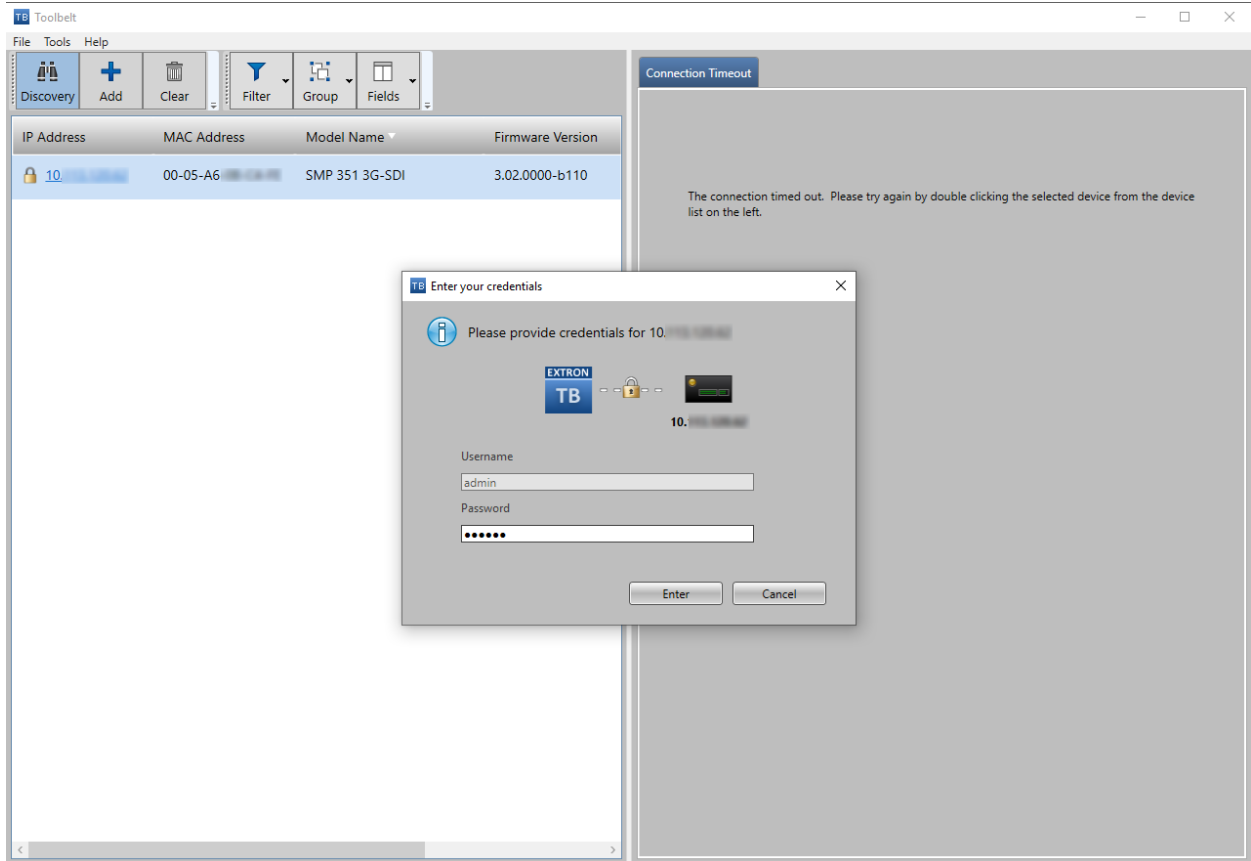
Open Toolbelt

Locate the SMP product you wish to add to your 802.1X deployment

Select the SMP by clicking on the IP address (hyperlink not shown here).

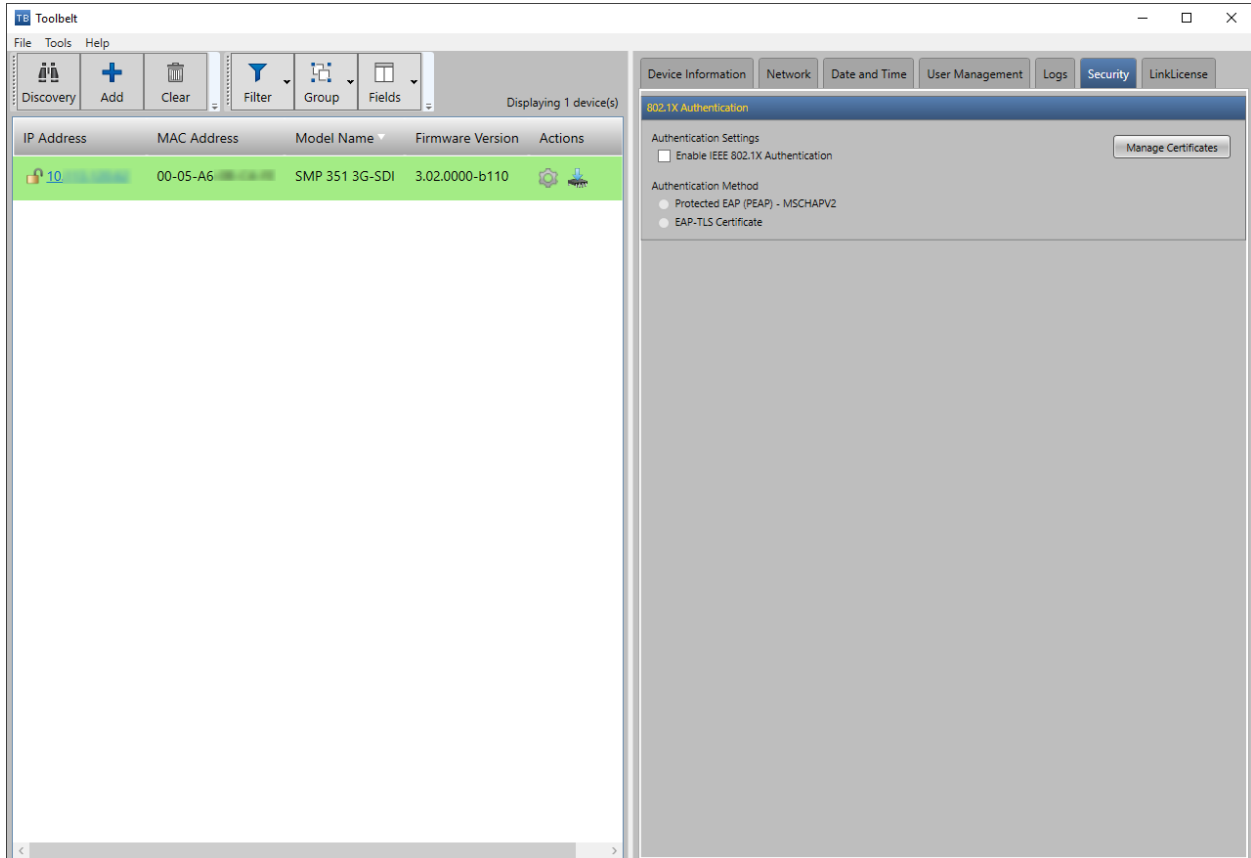


Enter the Username and Password for your SMP



Select the Security Tab and Enable 802.1X Authentication

Click Manage Certificates



Click the button labeled Add

Select your Certificate type

Click the button on the right of Certificate file and browse to where you have the certificates stored.

Click the button on the right of the Private Key line and browse to where your key is stored.



Enter your Private Key password and Alias.

Click Add Certificate.