

Replacing Button Labels

Attention: This product is made with new high tension button caps.

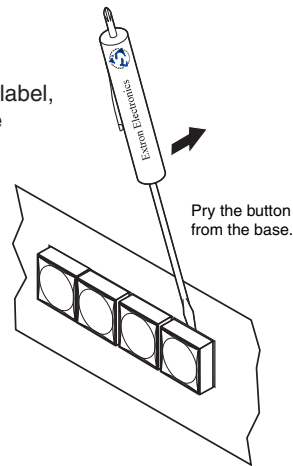
Follow these steps to relabel the button:

1. Remove the button assembly from the device.
The button assembly consists of a clear lens cap, the label, and a white diffuser. See the diagram on the opposite side of this instruction card.

Insert a small, flat-bladed screwdriver, such as an Extron Tweeker, between the button's base and the diffuser to gently pry the button assembly off from the button plunger, as shown to the right.

2. Locate the small corner notch on the lens cap and slide the screwdriver between the lens cap and the diffuser. See illustration (2a) on the opposite side of this instruction card.

Using a rotating motion of the screwdriver ((2b)), carefully pry the two pieces apart.



Extron Electronics, USA
1230 South Lewis Street
Anaheim, CA 92805
USA
714.491.1500
Fax 714.491.1517

Extron Electronics, Europe
Beeldschermweg 6C
3821 AH Amersfoort
The Netherlands
+31.33.453.4040
Fax +31.33.453.4050

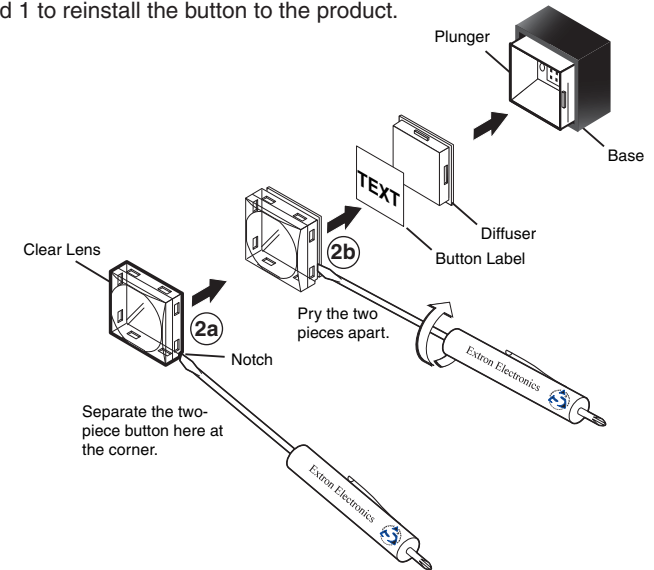
Extron Electronics, Asia
135 Joo Seng Road, #04-01
PM Industrial Building
Singapore 368363
+65.6383.4400
Fax +65.6383.4664

Extron Electronics, Japan
Kyodo Building
16 Ichibancho
Chiyoda-ku, Tokyo 102-0082 Japan
+81.3.3511.7655
Fax +81.3.3511.7656

68-1167-01
Rev. A
06 05

Replacing Button Labels, cont'd

3. Replace the label with the new button label.
4. Reverse steps 2 and 1 to reinstall the button to the product.



Replacing Button Labels

Attention: This product is made with new high tension button caps.

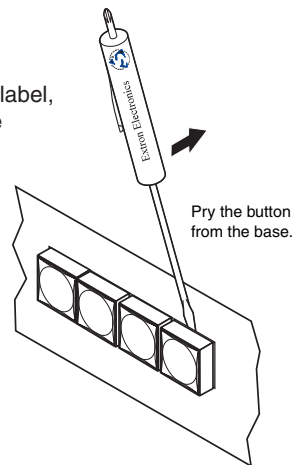
Follow these steps to relabel the button:

1. Remove the button assembly from the device.
The button assembly consists of a clear lens cap, the label, and a white diffuser. See the diagram on the opposite side of this instruction card.

Insert a small, flat-bladed screwdriver, such as an Extron Tweeker, between the button's base and the diffuser to gently pry the button assembly off from the button plunger, as shown to the right.

2. Locate the small corner notch on the lens cap and slide the screwdriver between the lens cap and the diffuser. See illustration (2a) on the opposite side of this instruction card.

Using a rotating motion of the screwdriver ((2b)), carefully pry the two pieces apart.



Extron Electronics, USA
1230 South Lewis Street
Anaheim, CA 92805
USA
714.491.1500
Fax 714.491.1517

Extron Electronics, Europe
Beeldschermweg 6C
3821 AH Amersfoort
The Netherlands
+31.33.453.4040
Fax +31.33.453.4050

Extron Electronics, Asia
135 Joo Seng Road, #04-01
PM Industrial Building
Singapore 368363
+65.6383.4400
Fax +65.6383.4664

Extron Electronics, Japan
Kyodo Building
16 Ichibancho
Chiyoda-ku, Tokyo 102-0082 Japan
+81.3.3511.7655
Fax +81.3.3511.7656

68-1167-01
Rev. A
06 05

Replacing Button Labels, cont'd

3. Replace the label with the new button label.
4. Reverse steps 2 and 1 to reinstall the button to the product.

