

AMK 4, AMK 5, and AMK 6 • Installation Guide

IMPORTANT NOTE:

Go to www.extron.com for the complete user guide, installation instructions, and specifications.



Overview

ATTENTION:

- All structural steps and electrical installation must be performed by qualified personnel in accordance with local and national building codes and electrical codes.
- Toute étape structurelle et installation électrique, doit être effectuée par un personnel qualifié, conformément aux codes du bâtiment, aux codes incendie et sécurité, et aux codes électriques, locaux et nationaux.

These angle mount kits are used to mount touchpanels to walls, glass surfaces, or furniture. The angle mount allows the touchpanel to be mounted at a lower accessible height while still being viewable from higher or lower lines of sight.

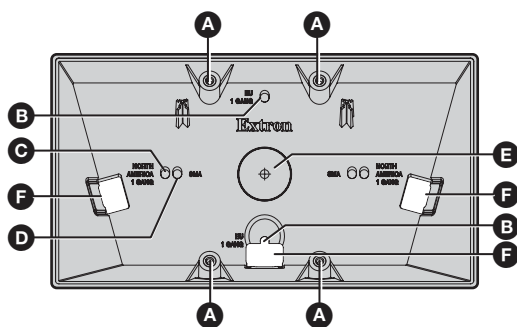
- Use the AMK 4 to mount the TLP Pro 535M.
- Use the AMK 5 to mount the TLP Pro 835M.
- Use the AMK 6 to mount the TLP Pro 1035M.

This guide provides instructions for professional installers to mount and install these touchpanels using the appropriate AMK mounting kit. The diagrams in this guide show the AMK 5 and TLP Pro 835M. Use the other kits to mount the corresponding touchpanels in the same way.

The kits consist of:

- (1) Plastic enclosure (AMK 4, AMK 5, or AMK 6; see figure 1)
- (1) Adhesive patch
- (1) Rear cover overlay can be attached to the opposite face of the glass to conceal the adhesive patch (see [figure 5](#) on page 3).
- (1) 10 foot (3 meter) flat Ethernet cable with RJ-45 connectors
- (1) Mounting feet grip pads
- (1) Mounting plate cover overlay (included with AMK 6 only)

NOTE: You must also download the alignment template for the corresponding AMK from www.extron.com. Print it at 100% size. Do not scale.



- A** (4) Mounting posts to attach mounting plate (included with touchpanel)
- B** (2) Mounting holes for EU junction box
- C** (2) Mounting holes for North American junction box
- D** (2) Mounting holes for Swivel Mount Adapter (SMA)
- E** Cut-out for cable management with SMA. The dimple in the center is a guide for a drill bit.
- F** (3) Open hole for cable management. There are optional cutouts to add extra space if needed.

Figure 1. AMK 5 Enclosure (front view)

Before Starting

To run cables to the installation location. Remove any of the cable access cut-outs, if required (see [figure 1](#), [E](#) or [F](#), on page 1).

There are three holes that can accommodate a flat Ethernet cable. If you are using a larger cable, cut away the plastic tabs from the sides of the cover using a sharp knife along the groove in the plastic.

If you are [mounting to a wall](#), [mounting to glass](#), or [mounting to a furniture with fasteners](#), feed the cables through the desired opening before mounting.

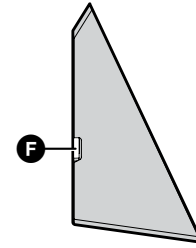


Figure 2. AMK Enclosure (side view)

Option 1: Mounting to a Wall

Mounting with Fasteners

Use the North America mounting holes (see [figure 1](#), [C](#)) to secure the AMK to drywall or a masonry wall. The installer must use screws and fasteners that are appropriate for the mounting surface.

Mounting to a Junction Box

1. Install an EU or US 1-gang junction box in the wall following the instructions provided by the manufacturer.
2. Attach the AMK to the junction box using the mounting holes in the back of the AMK:
 - EU junction box uses holes labeled EU ([B](#)).
 - US junction box uses holes labeled NORTH AMERICA ([C](#)).

Option 2: Mounting to a Glass Surface

1. Clean both sides of the glass with a lint-free cloth and a 1:1 mixture of isopropyl alcohol and water.
2. Place the alignment template on the inside glass surface (see [figure 3](#), [1](#)).

Use tape ([2](#)) to attach the alignment guide to the glass. Use a level ([3](#)) to ensure it is at the correct angle.

3. Remove the backing from the front of the adhesive patch and apply it to the back of the AMK.
4. Feed the cable through the desired opening of the AMK.

NOTE: It is difficult to feed cable into the AMK once it is attached to the glass surface.

5. Remove the backing from the back of the adhesive patch.

TIP: Wet your fingers to prevent them from sticking to the adhesive patch.

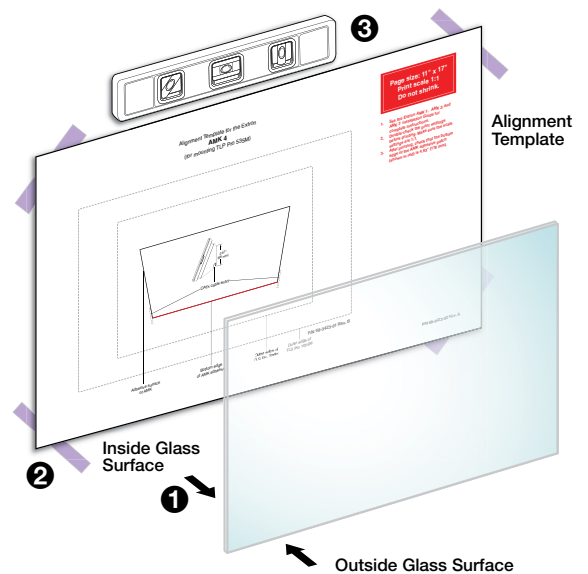


Figure 3. Placing the Template

6. Hold the AMK at an angle with the top away from the glass and align the bottom edge of the AMK with the red solid line on the alignment guide marked “Bottom adhesive side edge of AMK...”. Rotate the top of the AMK so that the adhesive pad attaches to the glass (see figure 4 inset).
7. Press the AMK firmly against the glass for at least 30 seconds. (see figure 4, ❶).
8. Remove the paper alignment template.
9. Allow the adhesive to cure at least 24 hours before installing the touchpanel.
10. Confirm that at least 75% of the adhesive is in contact with the glass before installing the rear cover overlay or the touchpanel.

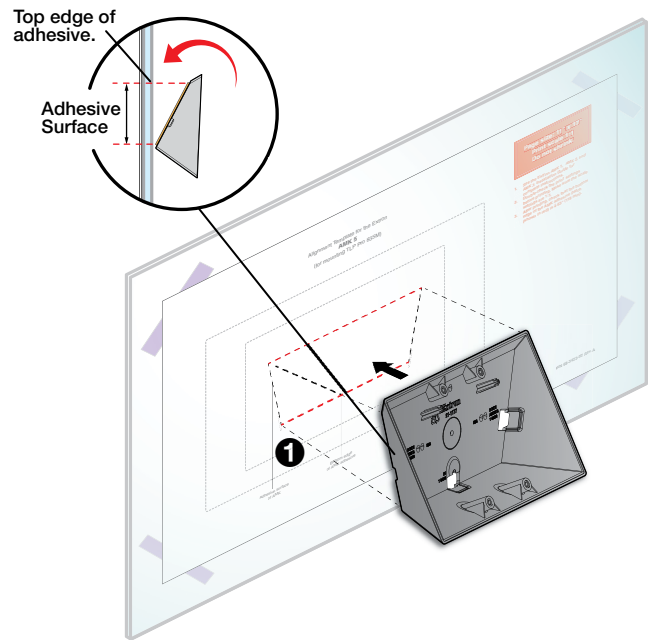


Figure 4. Attaching the AMK to the Glass

Mounting the Rear Cover Overlay (Optional)

The cover overlay is not required for mounting the touchpanel, but can improve the aesthetics of the AMK when it is viewed through the window from inside the conference room.

TIP: Wet your fingers to prevent them from sticking to the adhesive patch.

NOTE: Wait to install the cover overlay until confirming the adhesive is fully cured and no additional force is required.

1. Remove the backing from the cover overlay.
2. Position the cover overlay behind the AMK enclosure and secure it to the glass (see figure 5).
3. Use a credit card or similar flat edge to remove any air bubbles and use a cloth to absorb excess liquid.

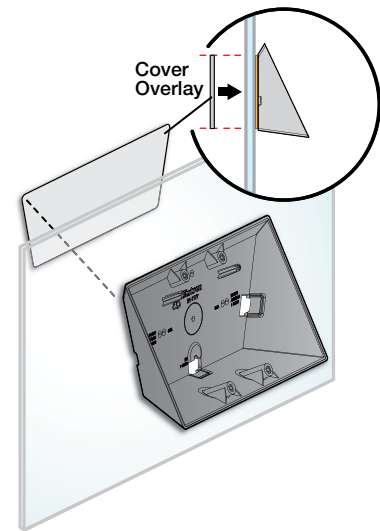


Figure 5. Attaching the Rear Cover Overlay

Option 3: Mounting to Furniture

Mounting with Rubber Feet

To place the AMK on furniture, follow these instructions:

1. Attach the four rubber feet to the back of the AMK (one in each corner).
2. Place the AMK in a suitable location.

Mounting with Fasteners

Use the North America mounting holes (see [figure 1](#), ❷ on page 1) to secure the AMK to furniture. The installer must use screws and fasteners that are appropriate for the mounting surface.

Mounting with Swivel Mount Adapter

To install the AMK to furniture using a Swivel Mount Adapter (SMA), follow these instructions:

1. Install the SMA by following the instructions in the *Swivel Mount Adapter Installation Guide*.
2. Drill a hole for cable management in the back of the AMK (see [figure 1, E](#), on page 1).
3. Secure the AMK to the SMA, using two #6-32 flat head screws and nuts.

Mounting the Touchpanel

If installing the TLP Pro 1035M with the AMK 6, remove the backing, and attach the rear cover overlay to the back of the mounting plate (see [figure 6](#)). This overlay covers the mounting plate metal so that it is not exposed to the inside of the room. The AMK 4 and AMK 5 do not require the overlay.

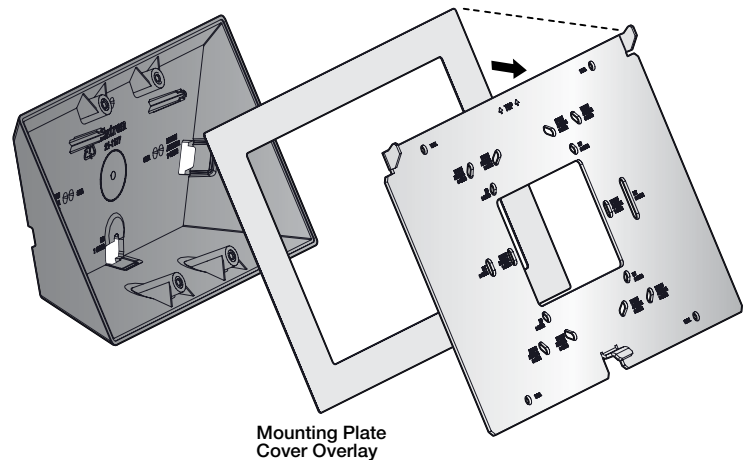


Figure 6. Attaching the Mounting Plate Cover Overlay to the Mounting Plate for TLP Pro 1035M

Figure 7 shows how to mount the TLP Pro 835M to the AMK 5. Mount the other touchpanels to the corresponding mounting kit in exactly the same way.

NOTE: After mounting the AMK, wait 24 hours to allow the adhesive to cure before installing the touchpanel.

1. Run cables through the center of the mounting plate.
2. Connect the cables to the touchpanel (see the *TLP Pro x35 Series User Guide*).
3. Fasten the mounting plate (provided with the touchpanel) to the AMK, using the four provided M3 screws (see [figure 7, 1](#)).
4. Attach the Ethernet cable to the LAN/PoE input on the rear panel of the touchpanel (see the *TLP Pro x35 Series User Guide*).
5. The mounting plate has two hooks (2), one on each top corner. Position the touchpanel so that these hooks fit into the two slots on the rear panel of the touchpanel (see the *TLP Pro x35 Series User Guide*).
6. Slide the touchpanel down slightly so that the hooks are seated securely in the slots.
7. The tongue at the bottom of the mounting plate (3) sits in the groove in the bottom of the touchpanel (see inset, 4). Fasten the touchpanel to the mounting plate by tightening the lock screw (5).

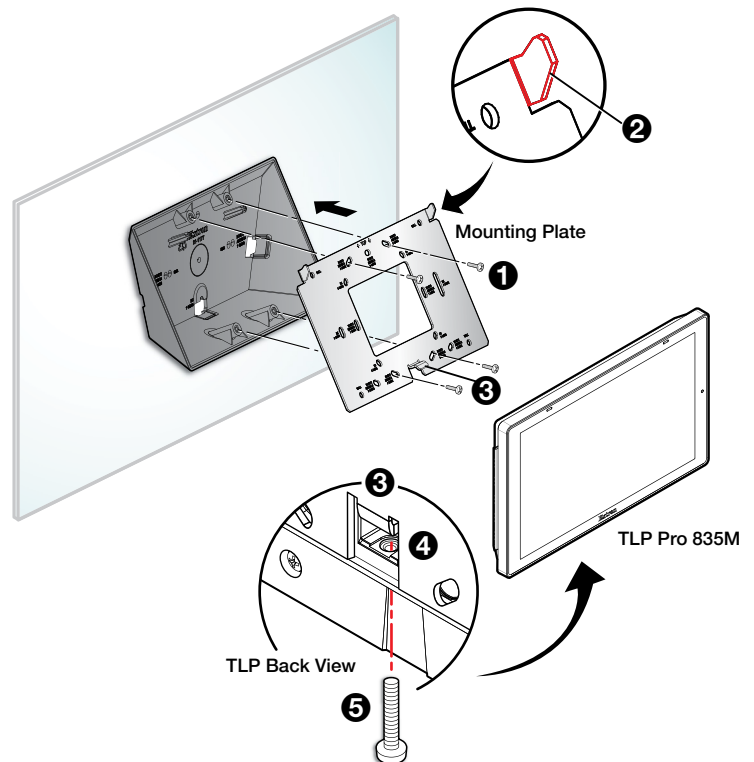


Figure 7. Mounting the TLP Pro 835M to the AMK 5

For information on safety guidelines, regulatory compliances, EMI/EMF compatibility, accessibility, and related topics, see the [Extron Safety and Regulatory Compliance Guide](#) on the Extron website.