

IMPORTANT:
Go to www.extron.com for the complete user guide and installation instructions before connecting the product to the power source.

Overview

The Extron® TLP Pro 1225TG, TLP Pro 1525TG, and TLP Pro 1725TG are table-top touchpanels with high resolution capacitive, edge-to-edge glass touchscreens. The TLP Pro 1225TG has a 12.1 inch screen with a 1280x800 resolution. The TLP Pro 1525TG has a 15.6 inch screen with a 1366x768 resolution. The TLP Pro 1725TG has a 17.3 inch screen with a 1920x1080 resolution. All three touchpanels are ideal for any AV applications requiring large touchpanels with flexible mounting options and fully customizable interfaces. This guide provides instructions for experienced installers to mount and install these touchpanels. For more complete details, see the *TLP Pro 1225, 1525, and 1725 Series User Guide* at www.extron.com.

Setup Overview and Checklist

Get Ready

- Download and install the latest version of the following software:
 - **GUI Designer** — For designing layouts for Extron TouchLink® Pro touchpanels and third party touch interfaces
 - **Global Configurator® Plus and Professional** — For setting up and configuring the control processor and touchpanel
 - **Global Scripter®** — Provides an integrated development environment for Extron control systems programming. Global Scripter provides an Extron-exclusive Python™ library (ControlScript®) and Global Scripter modules to get you started.
 - **Toolbelt** — For device discovery, device information, firmware updates, and configuration of network settings, system utilities, and user management for TouchLink Pro devices.

NOTE: All four software programs are available from www.extron.com.

- Obtain the following network information from your network administrator:
 - DHCP status** (on or off). If DHCP is off, you also require:
 - IP address**
 - Subnet mask**
 - Gateway**
 - Username** — This can be either admin or user.
 - Passwords** — The factory configured passwords for all accounts on this device have been set to the device serial number. Passwords can be changed during configuration. Passwords are case sensitive.

NOTE: If the device is reset to default settings, the passwords are reset to the default password, which is extron (for either admin or user).

- Make a note of the touchpanel MAC address from the label on the back of the device.

Mount and Cable All Devices

ATTENTION:

- Do not power on the touchpanels until you have read the Attention in the Power Supply section of the *TLP Pro 1225, 1525, and 1725 Series User Guide*.
- Ne branchez pas les écrans tactiles avant d'avoir lu la mise en garde dans la section « sources d'alimentation » du *TLP Pro 1225, 1525, and 1725 Series User Guide*.

- Mount the units. There are several mounting options for TouchLink Pro touchpanels (see **Mounting** on page 2).
- Connect cables to the touchpanels (see **Rear Panel Features** on page 4).
- Connect the touchpanel to a power source. These models can be powered by PoE or by a 12VDC power supply. The TLP Pro 1725TG ships with the PI 140 power injector. A power injector or 12 VDC power supply must be purchased separately for the 12-inch and 15-inch models.
- An Extron IP Link® control processor must be connected to the same Ethernet subnetwork as the touchpanel.

Set up the Touchpanels for Network Communication

- Connect the PC that you will use for setup, the control processor, and touchpanel **to the same Ethernet subnetwork**.
- Use the **Setup Menu** (see page 6) or Toolbelt to set the DHCP status and, if necessary, the IP address, subnet mask, gateway, and related settings for the touchpanel.

Configure the Touchpanels

- Create a graphical user interface with GUI Designer (see *GUI Designer Help File* for step-by-step instructions).
- Associate functions with the graphical user interface features with Global Configurator or Global Scripter.

TLP Pro 1225TG, 1525TG, and 1725TG • Setup Guide

Mounting

A range of optional mounting kits are available for these models. The kits must be purchased separately. Follow the installation instructions provided with the kit.

Removing the back and base covers

Some of these procedures require the back and base covers to be removed. You must remove the back cover before you can remove the base cover.

1. Use the provided Extron removal tool. There is one notch on each side of the back cover (figure 1, ❶). Insert the tool into the notch to release the catch.
2. Use the removal tool to remove the base cover. There are two notches at the back of the base (❷).

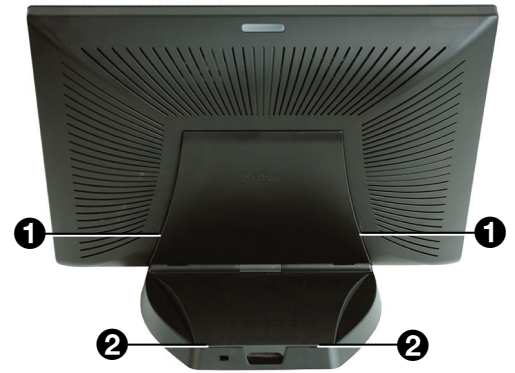


Figure 1. Remove the Back and Base Covers

Desktop Mounting

These touchpanels come assembled with stands that allow them to be placed on any suitable flat surface (for example a desk, table, or lectern).

Fixed Mounting

Figure 2 shows the base of the TLP Pro 1225TG, with the cover removed to indicate the position of the mounting holes (❶). The base of the TLP Pro 1525TG and TLP Pro 1725TG are similar and the spacing of the mounting holes is identical.

1. Mark the location for two holes, 4.96 inches (126 mm) apart. This measurement is the same for all three models.
2. Drill two pilot holes into the desktop.
3. Remove the base cover (see “Removing the back and base covers”, above).
4. Insert two #10 flat-head wood screws (not provided) through the touchpanel and align them with the two pilot holes.
5. Secure the touchpanel to the tabletop.
6. Replace the base cover.

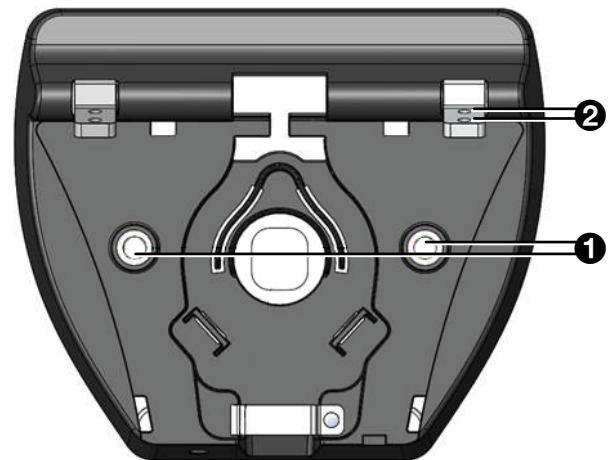


Figure 2. Mounting Holes in TLP Pro 1225TG Base

Kensington® Security Lock

For added security, attach a Kensington Security Lock (not provided) to the metal-reinforced Kensington Security Slot on the rear edge of the base (see figure 3, ❶). The figure shows the rear edge of the TLP Pro 1525TG base, but the base of the TLP Pro 1225TG and TLP Pro 1725TG are very similar. Follow the instructions that are provided by the manufacturer to install the lock.



Figure 3. Slot for Kensington Security Lock

SMA-1 Swivel Mount Adapter

To swivel either device up to 180° in either direction, use the optional Extron SMA-1 swivel mount adapter, to permanently mount the touchpanels.

1. Remove the back cover and base cover (see “Removing the back and base covers”, above).
2. Attach the conduit, insulation disk, and swivel disk and configure the set screws to allow for the degree of swivel that is required (see the *SMA-1 Swivel Mount Adapter Kit User Guide*, available at www.extron.com). Place the mounting hole in the base over the conduit of the SMA-1.
3. Secure the unit with the backing plate and locking nut as described in the *SMA-1 Swivel Mount Adapter Kit User Guide*.

VESA Mounting

Use a third-party D-type VESA mounting kit with the 100 mm x 100 mm mounting pattern.

1. Remove the back cover (see “Removing the back and base covers”, above).
2. Remove the four screws holding the touchpanel to the base. There are two screws in each base attachment hinge (see figure 2, ❷, above).
3. Follow the instructions provided with the VESA mounting kit.

Front Panel Features

Figure 4 shows the TLP Pro 1225TG front panel diagram. The features of the TLP Pro 1525TG and TLP Pro 1725TG are very similar.

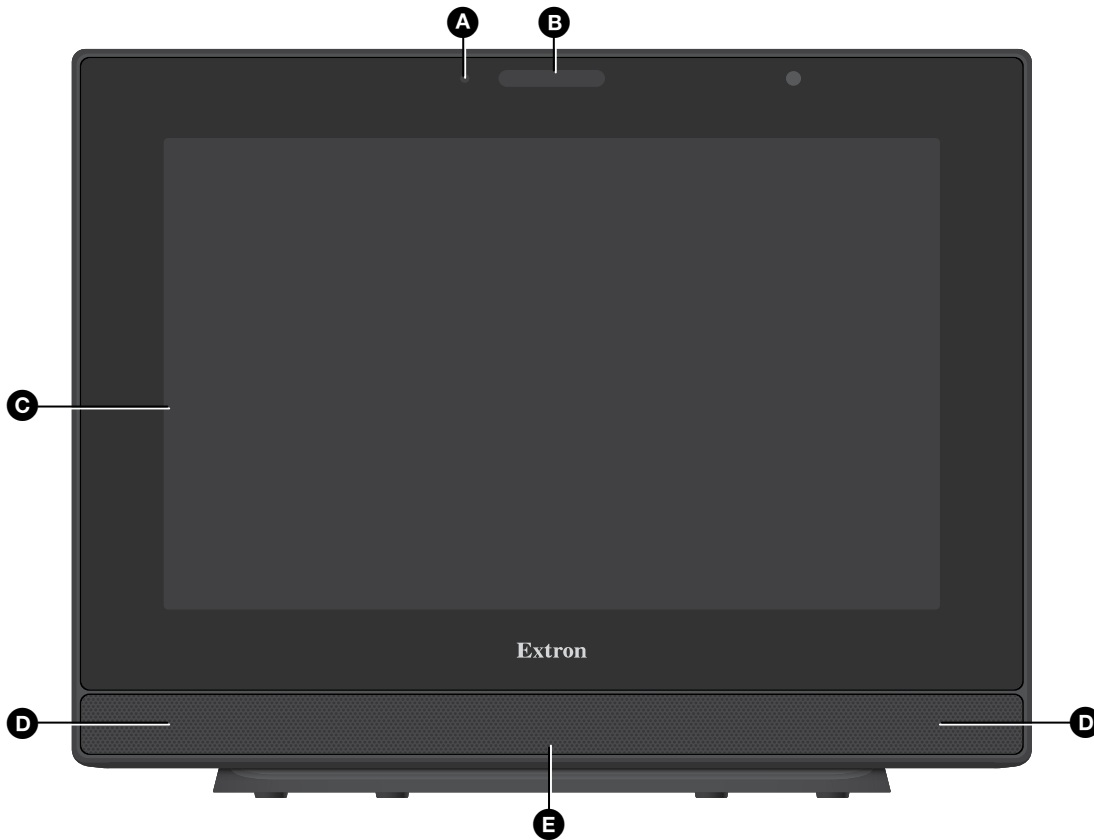


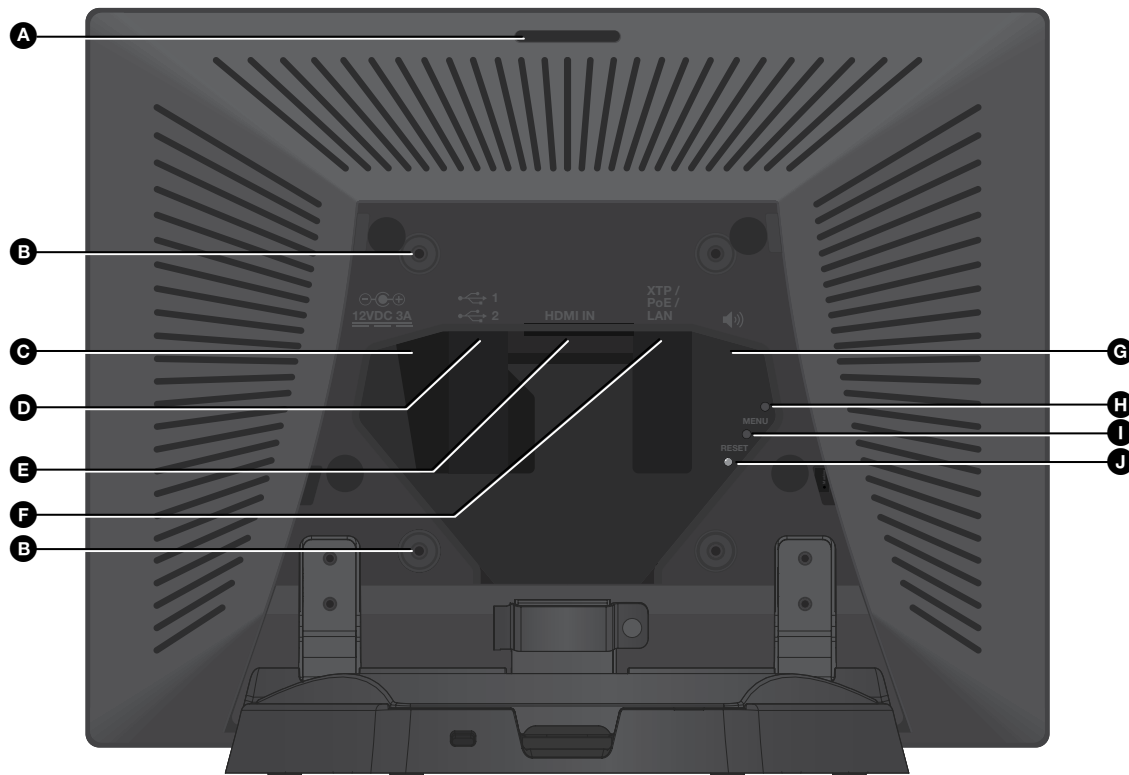
Figure 4. TLP Pro 1225TG Front Panel

- A Ambient light sensor** — Monitors ambient light level and adjusts screen brightness.
- B Status light** — Can be programmed to provide system feedback. The LED light bar is located above the screen.
- C Capacitive touch screen** — Provides simple control of AV systems:
 - The TLP Pro 1225TG has a 12.1 inch screen with a 1280x800 resolution.
 - The TLP Pro 1525TG has a 15.6 inch screen with 1366x768 resolution.
 - The TLP Pro 1725TG has a 17.3 inch screen with a 1920x1080 resolution.
- D Speakers** — Provide stereo audio for video preview and audible feedback from button presses. They are located below the screen, one on each side of the panel.
- E Motion sensor** — Detects motion between three to five feet from the touchpanel, and at least 15° from the center axis.
 - If the **Sleep Timer** has been set (see [Setup Menu](#) on page 6), and no motion has been detected for a user-defined period of time, the touchpanel enters sleep mode.
 - If **Wake on Motion** has been set (see [Setup Menu](#)), and motion is detected by the sensor while the screen is in sleep mode, the screen display is restored and active.

TLP Pro 1225TG, 1525TG, and 1725TG • Setup Guide

Rear Panel Features

Figure 5 shows the TLP Pro 1225TG rear panel diagram (with the base and back cover removed). The features of the TLP Pro 1525TG and TLP Pro 1725TG are very similar.



- | | | |
|------------------------------|---|------------------------------|
| A Rear status light | E HDMI input | I RESET button |
| B Vesa mounting holes | F XTP/LAN/PoE input | J RESET LED |
| C Power supply input | G Audio output (see page 5) | |
| D USB connectors | H MENU button | |

Figure 5. TLP Pro 1225TG Rear Panel (with base and back cover removed)

- A Rear status light** — An LED light bar that can be programmed to provide system feedback.
- B VESA mounting holes (4)** — For use with D-type VESA mounting kits with the 100 x 100 mm mounting pattern.
- C Power supply input** — Connect a 12 VDC, 3.0 A Limited Power Source (LPS) power supply to this DC plug connector.

ATTENTION:

- The touchpanels can use a 12 VDC desktop power supply or Power over Ethernet. Do not connect either power supply before reading the Attention in the Power section of the *TLP Pro 1225, 1525, and 1725 Series User Guide*.
- Les écrans tactiles peuvent utiliser une source d'alimentation externe 12 Vcc ou l'alimentation POE via Ethernet. Ne branchez pas de sources d'alimentation externes avant d'avoir lu les mises en garde dans la section « Power Supply » du *TLP Pro 1225, 1525, and 1725 Series User Guide*.

- D USB connectors (2)** — For peripheral controls.
- E HDMI input** — For alternative video input.
- F XTP/LAN/PoE input**

- **XTP input** — Connect the touchpanel to an Extron XTP® source using a twisted pair cable, terminated with an RJ-45 connector. For complete information about which cables to use, see the user guide for your XTP product.
- **LAN input** — Connect the touchpanel to the LAN using a twisted pair cable, terminated with an RJ-45 connector.
- **PoE input** — The connector can be used with a PoE power injector (see **Connecting Power** on page 5).

NOTE: Some XTP models are able to remotely power these touchpanels but not all have that capability. Go to the [Extron website](#) and check the product page for your XTP model to ensure it can power your touchpanel.

An Extron IP Link Pro control processor must also be connected to the same network as the TouchLink Pro touchpanel.

- G Audio output** (see [figure 5](#) on page 4) — One 3.5 mm line level audio output for use with headphones or assistive listening devices.
- H MENU button** — Activates the setup menu (see [Setup Menu](#) on page 6).
- I RESET button** — Pressing the reset button allows the unit to be reset in any of four different modes (see [Reset Modes: A Brief Summary](#) on page 6). For more information, see the *TLP Pro 1225, 1525, and 1725 Series User Guide*.
- J RESET LED** — Provides feedback about the reset status when the user presses the reset button.

Connecting Power

ATTENTION:

- Do not power on the touchpanels until you have read the Attention notification in the “Rear Panel Features” section of the *TLP Pro 1225, 1525, and 1725 Series User Guide*.
- Ne branchez pas les écrans tactiles avant d’avoir lu la mise en garde dans la section « Rear Panel Features » du *TLP Pro 1225, 1525, and 1725 Series User Guide*.

The TLP Pro 1725TG ships with the Extron PI 140 power injector included. For the TLP Pro 1225TG and TLP Pro 1525TG, the power injector must be purchased separately. Figure 6 shows the PI 140. Your power injector may look different.

1. Connect a straight-through Ethernet cable from the power injector to a switch or router. This cable carries network information from the switch or router to the power supply input.
2. Connect a second straight-through cable from the power injector to the XTP/PoE/LAN connector of the touchpanel (see [figure 5](#), **F**, on page 4). This cable carries the network information and 48 VDC from the power injector to the touchpanel.
3. Connect the IEC power cord to a convenient 100 VAC to 240 VAC, 50-60 Hz power source.

Alternatively, use an Ethernet cable to connect the XTP/LAN/PoE+ port of the interface to a PoE+ switch or connect the touchpanel directly to an XTP model that is capable of remotely powering a touchpanel (see the [note](#) on page 4).

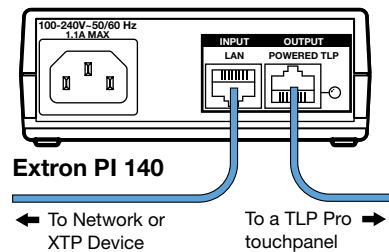


Figure 6. Connecting the Power Injector

TLP Pro 1225TG, 1525TG, and 1725TG • Setup Guide

Reset Modes: A Brief Summary

These touchpanels offer the following reset modes. For full information about the modes, see the *TLP Pro 1225, 1525, and 1725 Series User Guide*.

- **Use factory firmware:** Use this mode to replace firmware in the event of firmware failure. Press and hold the **RESET** button (figure 5, ❶ on page 4) while applying power to the unit.
- **Reset All IP Settings:** Use this mode to reset all network settings without affecting user-loaded files. Press and hold the **RESET** button for 6 seconds. After the **RESET LED** (❷) blinks twice, release and momentarily press the **RESET** button.
- **Reset to Factory Defaults:** Use this mode to return the touchpanel to factory default settings, including passwords. Press and hold the **RESET** button for 9 seconds. After the **RESET LED** blinks three times, release and momentarily press the **RESET** button.

NOTES:

- The factory configured passwords for all accounts on this device have been set to the device serial number. Passwords can be changed during configuration. Passwords are case sensitive.
- If the device is reset to default settings, the passwords are reset to the default password, which is extron (for either admin or user).

- **Enable or Disable the DHCP Client:** Use this mode to toggle between DHCP enabled and DHCP disabled. Press the **RESET** button five times, consecutively. After the fifth press, do not press the button again within 3 seconds. If DHCP was enabled, it is now disabled and the **RESET LED** blinks three times. If DHCP was disabled, it is now enabled and the **RESET LED** blinks six times.

NOTES:

- By default DHCP is off and the unit uses a static IP address.
- When you disable the DHCP client, the unit reverts to using the previously-set static IP address.

Setup Menu

Press the **MENU** button (figure 5, ❸, on page 4) to open the setup menu. Select any of the six available screens (**Status**, **Network**, **Display**, **Audio**, **Input** and **Advanced**) by tapping the appropriate button in the navigation bar at the top of the screen (for more information, see the *TLP Pro 1225, 1525, and 1725 Series User Guide*).

Figure 7 shows the setup menu for the TLP Pro 1225TG. The setup menu for the TLP Pro 1525TG and TLP Pro 1725TG are very similar.

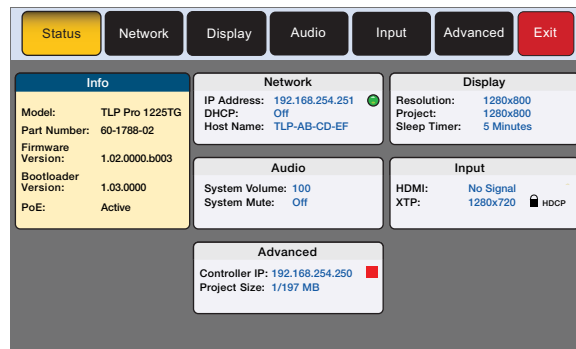


Figure 7. Setup Menu: Status Page for TLP Pro 1225TG

For information on safety guidelines, regulatory compliances, EMI/EMF compatibility, accessibility, and related topics, see the [Extron Safety and Regulatory Compliance Guide](#) on the Extron website.

For information about replacing and disposing of batteries, see the *TLP Pro 1225, TLP Pro 1525, and TLP Pro 1725 Series User Guide* at www.extron.com.