

IMPORTANT:
Go to www.extron.com for the touchpanel user guide and installation instructions before connecting the touchpanel to a power source.

Overview

ATTENTION:

- All structural steps and electrical installation must be performed by qualified personnel in accordance with local and national building codes and electrical codes.
- Toute étape structurelle et installation électrique, doit être effectuée par un personnel qualifié, conformément aux codes du bâtiment, aux codes incendie et sécurité, et aux codes électriques, locaux et nationaux.

These angle mount kits are used to mount touchpanels to walls or glass surfaces. The angle mount allows the touchpanel to be mounted at a lower accessible height while still being viewable from higher or lower lines of sight.

- Use the AMK 1 to mount the TLS 525M, and TLP Pro 525M.

NOTE: The TLC Pro 526M is not compatible with the AMK1 due to the lack of clearance for the port expansion adapter.

- Use the AMK 2 to mount the TLS 725M, TLP Pro 725M, and TLC Pro 726M.
- Use the AMK 3 to mount the TLS 1025M, TLP Pro 1025M, and TLC Pro 1026M.

This guide provides instructions for professional installers to mount and install these touchpanels using the appropriate AMK mounting kit. The diagrams in this guide show the AMK 2 and TLP Pro 725M. Use the other kits to mount the corresponding touchpanels in the same way.

The kits consist of:

- (1) plastic enclosure (AMK 1, AMK 2, or AMK 3; see figure 1) with an adhesive patch attached to the back. The enclosure ships with a metal plate attached to the mounting posts (see figure 1, **A**).
- (1) cover overlay can be attached to the opposite face of the glass to conceal the adhesive patch (see figure 5, on the next page).
- LED overlay (AMK 2 and AMK 3 only, see figure 6, **1**, on the next page).
- (4) M3 screws (**6**).
- (1) 10 foot (3 meter) flat Ethernet cable with RJ-45 connectors.

You must also download the alignment template from www.extron.com. One template is for the AMK 1. A second template is for both the AMK 2 and AMK 3. **Print it at 100% size. Do not scale.**

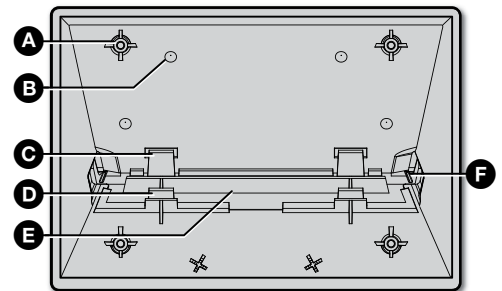


Figure 1. AMK Enclosure (front view)

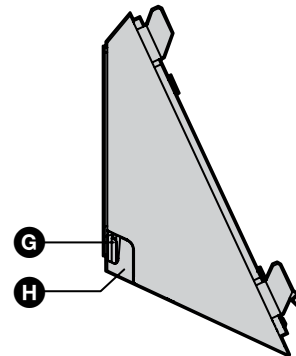


Figure 2. AMK Enclosure (side view)

Before Starting

To run cables to the back of the touchpanel, remove the cable access cover (see figure 1, **E**) by releasing the catches (**D**) and pulling the cover away.

There is a slot on either side of the cover (see figure 2, **G**) that can accommodate the flat Ethernet cable. If you are using a larger cable, cut away the plastic tabs (**H**) from the sides of the cover using a sharp knife along the groove in the plastic (see figure 1, **F**).

To replace the cover, slide the tabs (**C**) into the notches on the back of the enclosure and press the catches (**D**) back into place.

Option 1: Mounting the AMK to a Wall with Fasteners

To mount the AMK to a wall or furniture, drill holes through the four dimples in the plastic (**B**) and attach the AMK. The installer must use screws and fasteners that are appropriate for the mounting surface.

Option 2: Mounting the AMK to a Glass Surface

- Clean both sides of the glass with a lint-free cloth and a 1:1 mixture of isopropyl alcohol and water.
- Place the alignment template on the **inside glass surface** (see figure 3, **1**). Use tape (**2**) to attach the alignment guide to the glass. Use a level (**3**) to ensure it is at the correct angle.
- Remove the plastic backing from the adhesive patch on the back of the AMK.

TIP: Wet your fingers to prevent them from sticking to the adhesive patch.

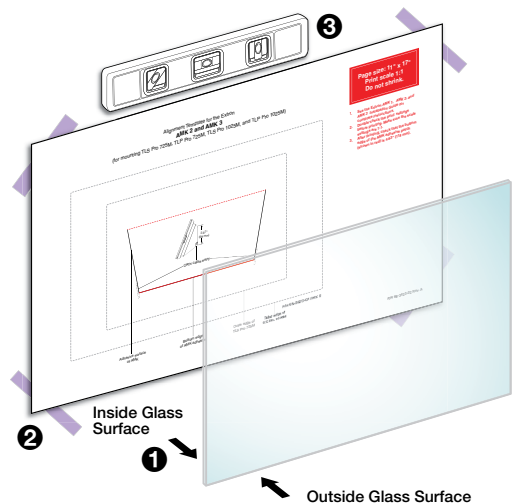


Figure 3. Placing the Template

AMK 1, AMK 2, and AMK 3 • Installation Guide (Continued)

- Do one of the following (see figure 4, inset):
 - Hold the AMK at an angle with the bottom away from the glass and align the top edge of the AMK with the red dotted line on the alignment template marked “**Top edge of AMK...**”. Rotate the bottom of the AMK so that the adhesive pad attaches to the glass.
 - Hold the AMK at an angle with the top away from the glass and align the bottom edge of the AMK with the red solid line on the alignment guide marked “**Bottom edge of AMK...**”. Rotate the top of the AMK so that the adhesive pad attaches to the glass.
- Press the AMK firmly against the glass (see figure 4, ①).
- Remove the paper alignment template from behind the glass.

Mounting the Cover Overlay (Optional)

The cover overlay is not required for mounting the touchpanel, but can improve the aesthetics of the AMK when it is viewed through the window from inside the conference room.

TIP: Wet your fingers to prevent them from sticking to the adhesive patch.

- Remove the paper backing from the cover overlay.
- Position the cover overlay behind the AMK enclosure and secure it to the glass (see figure 5).
- Use a credit card or similar flat edge to remove any air bubbles.

Mounting the Touchpanel

Figure 6 shows how to mount the TLS 725M to the AMK 2. Mount the other touchpanels to the corresponding mounting kit in exactly the same way.

- If required, remove the paper backing, and attach the LED overlay to the back of the touchpanel (see figure 6, ①). This overlay covers the rear panel LEDs so that they do not cause a distraction inside the conference room.
- Run cables through the gap left by removing the cable access cover (see **Before Starting** on the previous page) to the AMK and through the mounting plate.
Connect the cables to the touchpanel (see the user guide for your touchpanel model).
- Fasten the mounting plate (provided with the touchpanel) to the metal plate that comes with the AMK, using the four provided M3 screws (②).
- Attach the Ethernet cable to the LAN/PoE input on the rear panel of the touchpanel (see the user guide for your touchpanel model).
- The mounting plate for the 5" models has two hooks (one in each top corner). The mounting plates for the 7" and 10" models have four hooks (③), (one in each corner)
Position the touchpanel so that these hooks fit into the slots on the rear panel of the touchpanel (see the user guide for your touchpanel model).
- Slide the touchpanel down slightly so that the hooks are seated securely in the slots.
- The tongue at the bottom of the mounting plate (④) sits in the groove in the bottom of the touchpanel (see inset, ⑤). Fasten the touchpanel to the mounting plate by tightening the lock screw (⑥).

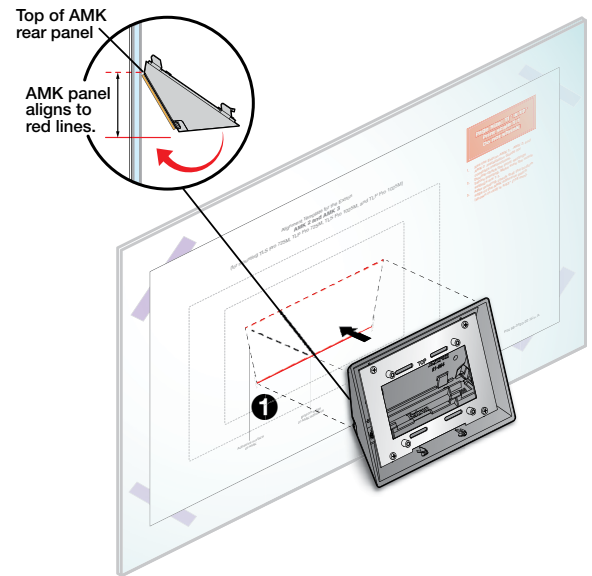


Figure 4. Attaching the AMK to the Glass

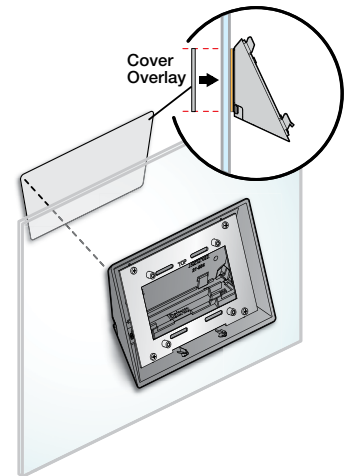


Figure 5. Attaching the Cover Overlay

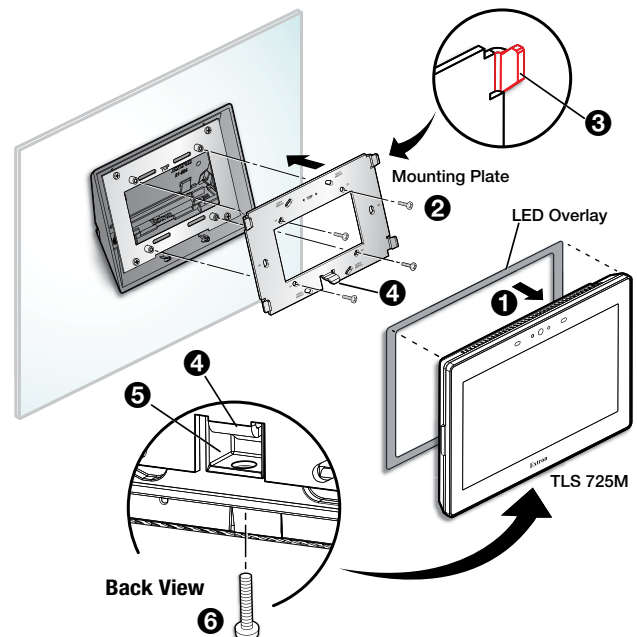


Figure 6. Mounting the TLS 725M to the AMK 2