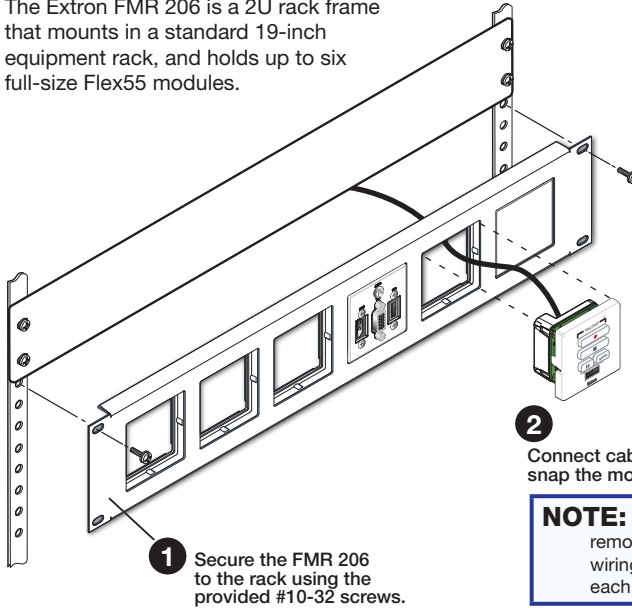




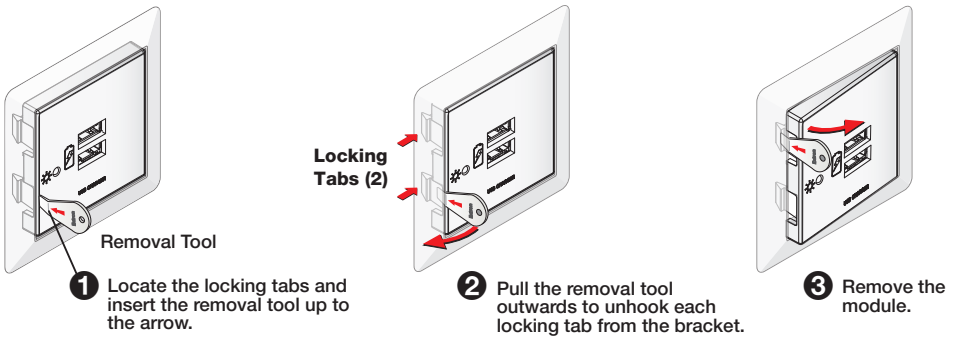
The Extron FMR 206 is a 2U rack frame that mounts in a standard 19-inch equipment rack, and holds up to six full-size Flex55 modules.



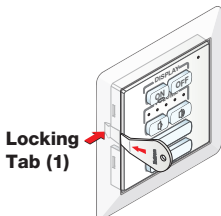
NOTE: Some modules are difficult to remove once installed. Make sure the wiring is correct before snapping in each module.

Flex55 Module Removal

Follow these steps to remove an installed Flex55 module.



For modules with one locking tab, unhook the tab located at the center.



For half modules, the tab is located as shown below:

