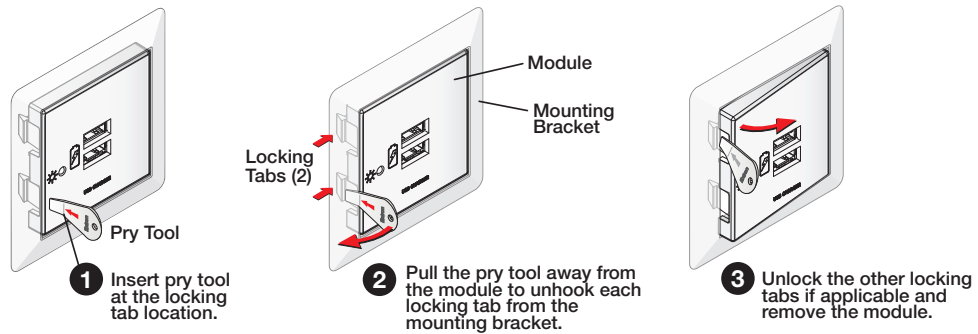
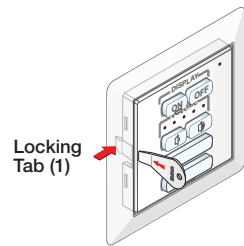


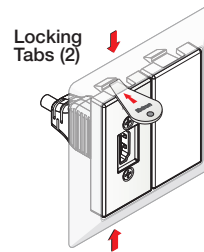
## FLEX55 Module Removal Guide



**For modules with one locking tab,** unhook the tab located at the center.



**For half-modules,** unhook the tab on top and bottom.



**NOTE:** To verify the location of the locking tabs, check the module specifications (available at [www.extron.com](http://www.extron.com)).

68-3031-50 B 03 20  
© 2020 Extron Electronics.  
All rights reserved.  
[www.extron.com](http://www.extron.com)