

Overview

The Extron WAP 100AC wireless access point is easily installed and supports the full spectrum of Wi-Fi channels. For more complete procedures, see the *WAP 100AC User Guide* at www.extron.com.

Setup Overview and Checklist

Get Ready

- ☐ Obtain the following network information about the WAP 100AC from your network administrator:
 - ☐ DHCP status (on or off). If DHCP is off, you also require:
 - ☐ IP address (default 192.168.1.1)
 - ☐ Subnet mask (default 255.255.255.0)
 - ☐ Gateway
 - ☐ User name — by default, this is admin.
 - ☐ Password

NOTES:

- The factory configured passwords for all accounts on this device have been set to the device serial number. Passwords are case sensitive.
- If the device is reset to default settings, the password will be the default password configuration. The default password is **extron**.

- ☐ Make a note of the MAC address. This can be found on the WAP 100AC rear panel label.

Mount and Cable the WAP 100AC

ATTENTION:

- Do not power on the WAP 100AC until you have read the Attention in the Power Supply section of the *WAP 100AC User Guide*.
- Ne branchez pas le WAP 100AC avant d'avoir lu la mise en garde dans la section « sources d'alimentation » du *WAP 100AC User Guide*.

- ☐ Decide where to mount the WAP 100AC
- ☐ Prepare the mounting site. Do not finish mounting the unit until all the cables are in place.
- ☐ Use Ethernet cable to connect the WAP 100AC to a power injector or the network.
- ☐ If you are not using Power over Ethernet (PoE), connect a 12 VDC power power supply.

NOTE: The WAP 100AC can use a 12 VDC, minimum 1.0 A power supply or a PoE+ (802.3at compliant) power injector. Extron recommends using PoE.

- ☐ Complete the mounting of the WAP 100AC.

Set up the WAP 100AC for Network Communication

- ☐ Connect the PC that you will use for setup to the same Ethernet subnetwork as the WAP 100AC.
- ☐ Use the WAP 100AC Web pages to configure the WAP 100AC network settings.

Mounting

ATTENTION:

- All structural steps and electrical installation must be performed by qualified personnel in accordance with local and national building codes and electrical codes.
- Toute étape structurelle et installation électrique, doit être effectuée par un personnel qualifié, conformément aux codes du bâtiment, aux codes incendie et sécurité, et aux codes électriques, locaux et nationaux.

WAP 100AC Wireless Access Point • Setup Guide

Consider the Mounting Location

Consider these issues to determine a suitable position to mount the WAP 100AC for optimal performance:

- Walls, ceilings, and objects such as filing cabinets can decrease signal strength. Take into account the number, thickness, and location of walls and ceilings.
- Wireless signals are weakened less by dry wall than many other materials, such as brick or metal.
- Interference from electrical devices that generate RF noise (for example, microwaves or cordless phones) can also weaken the signal.
- Two or more WAP 100AC units can be used to wirelessly connect networks or to enlarge the wireless area beyond the area that can be served by a single access point.

Mounting to a Solid Ceiling or Wall

Extron provides a wall mounting hardware kit that includes:

- Two wall plugs
- Two P3.5 x 32 screws
- Mounting bracket
- Two P2.6 x 12 screws

To mount the unit, follow these instructions:

1. Drill two holes 2.76 inches (70 mm) apart.
2. Screw in the wall plugs (1).
3. Attach the mounting bracket (2) to the ceiling using the P3.5 x 32 screws (3).
4. Insert the P2.6 x 12 screws (4) into the mounting holes on the top of the WAP 100AC (5). Leave enough of the screws exposed to insert the heads into the mounting bracket.

If you need extra space between the WAP 100AC and the mounting bracket, use the spacers and long screws from the T-rail mounting kit (see [Mounting to a Dropped Ceiling](#) on the following page).

5. Connect the cables. The WAP 100AC can use a PoE injector (recommended by Extron) or a 12 VDC desktop power supply.

ATTENTION:

- Do not connect either power supply before reading the Attention notifications in the Power Supply section of the *WAP 100AC User Guide*.
- Ne branchez pas de sources d'alimentation externes avant d'avoir lu les mises en garde dans la section « sources d'alimentation » du *WAP 100AC User Guide*.
- Disconnect power from either power supply before making any connections.
- Débranchez de sources d'alimentation externes avant d'effectuer n'importe quelles connexions.

6. Insert the heads of the P2.6 x 12 screws (see step 4) into the holes in the mounting bracket.
7. Turn the WAP 100AC about 90° clockwise to lock it into place.
8. Power on the PoE injector or 12 VDC power supply.

You are now ready to configure the WAP 100AC (see [Configuring the WAP 100AC](#) on page 5).

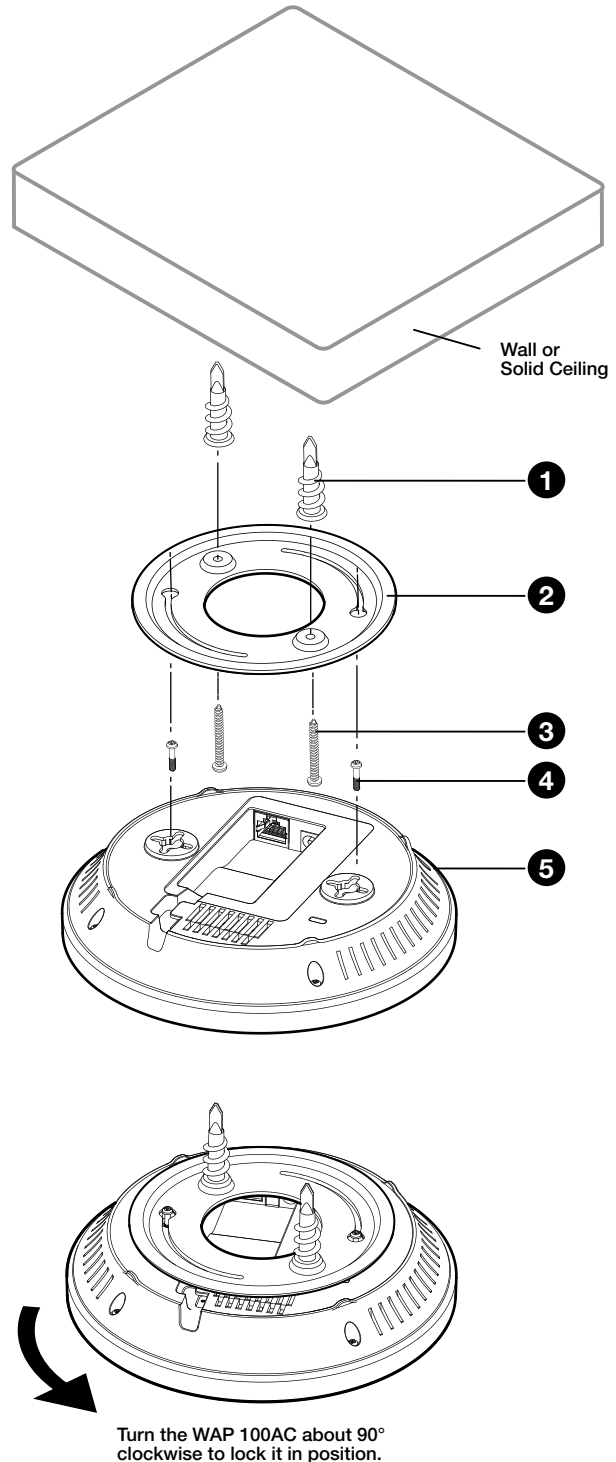
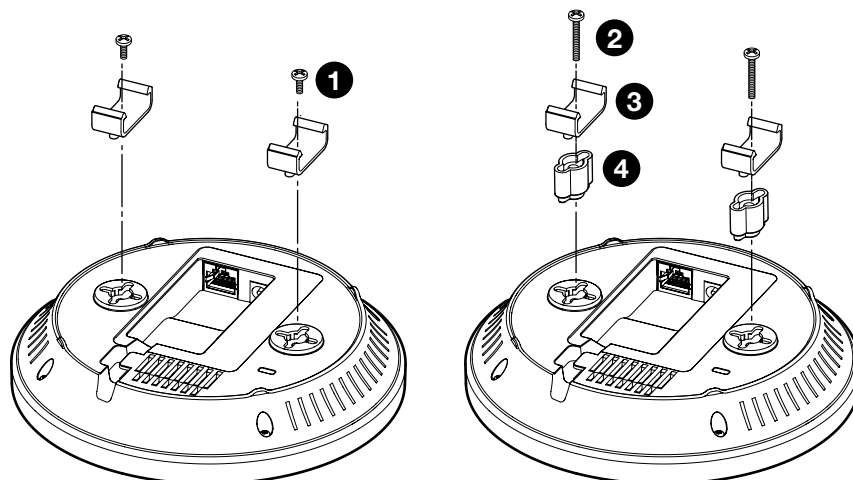


Figure 1. Mounting the WAP 100AC to a Solid Ceiling or Wall

Mounting to a Dropped Ceiling



Extron provides a mounting hardware kit that includes:

- ❶ Two P2.6 x 10 screws
- ❷ Two P2.6 x 25 screws — used with spacers.
- ❸ Two 9/16 inch (1.43 cm) T-rail connectors
- Two 15/16 inch (2.38 cm) T-rail connectors (not shown)
- ❹ Two Spacers

Figure 2. Mounting the WAP 100AC to a dropped ceiling

To mount the unit, follow these instructions:

1. Decide whether you need the 9/16 inch or 15/16 inch T-rail connectors and whether you need to use the spacers to accommodate ceiling tiles.
If you do not need the spacer, use the shorter (P2.6 x 10) screws. If you require the spacers, use the longer (P2.6 x 25) screws.
2. Connect the cables. The WAP 100AC can use a PoE injector (recommended by Extron) or a 12 VDC desktop power supply.

ATTENTION:

- Do not connect either power supply before reading the Attention notifications in the Power Supply section of the *WAP 100AC User Guide*.
- Ne branchez pas de sources d'alimentation externes avant d'avoir lu les mises en garde dans la section « sources d'alimentation » du *WAP 100AC User Guide*.
- Disconnect power from either power supply before making any connections.
- Débranchez de sources d'alimentation externes avant d'effectuer n'importe quelles connexions.

3. Align the T-rail clips (figure 3, ❷) with the T-rail (❶) and press the unit until the clips snap into place.
4. Power on the PoE injector or 12 VDC power supply.

You are now ready to configure the WAP 100AC (see [Configuring the WAP 100AC](#) on page 5).

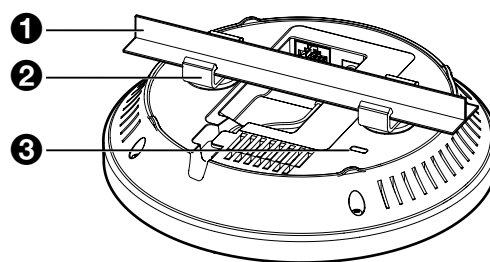


Figure 3. Attaching the WAP 100AC to a T-rail

Kensington Lock

For added security, once the installation is complete, attach a Kensington Security Lock (not provided) to the metal-reinforced slot on the top of the unit (see figure 3, ❸). Follow the instructions that are provided by the manufacturer to install the lock.

WAP 100AC Wireless Access Point • Setup Guide

Rear Panel Features

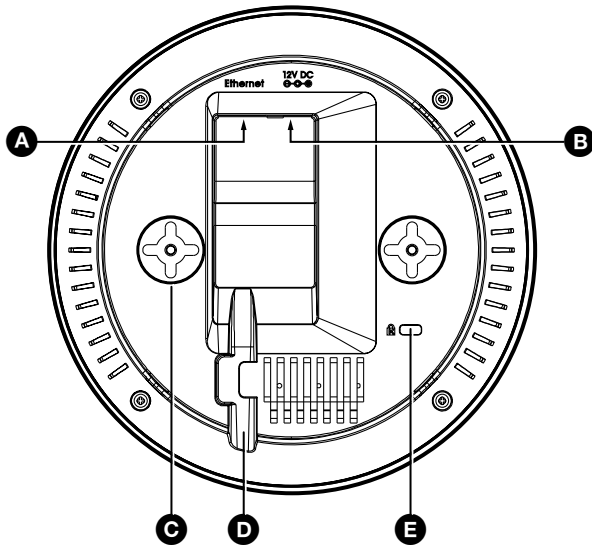


Figure 4. WAP 100AC Rear Panel

A Ethernet input — Accepts an input from a LAN or a power injector.

NOTES:

- The WAP 100AC can use a 12 VDC, minimum 1.0 A power supply or a PoE power injector. Extron recommends using PoE.
- Do not use both the 12 VDC power supply and power injector at the same time.

ATTENTION:

- Do not connect either power supply before reading the Attention notifications in the Power Supply section of the *WAP 100AC User Guide*.
- Ne branchez pas de sources d'alimentation externes avant d'avoir lu les mises en garde dans la section « sources d'alimentation » du *WAP 100AC User Guide*.

NOTES: When using shielded twisted pair cable in bundles or conduits, consider the following:

- Limit the use to no more than two pass-through points, which may include patch points, punch down connectors, couplers and power injectors. If these pass-through points are required, use shielded couplers and punch-down connectors.
- Do not exceed 40% fill capacity in conduits.
- Do not comb the cable for the first 20 meters, where cables are straightened, aligned, and secured in tight bundles.
- Loosely place cables and limit the used of tie wraps or hook-and-loop fasteners.
- Keep twisted pair cables separate from AC power cables.

If you are using a 12 VDC power input, connect the WAP 100AC directly to a network switch or router.

If you are using a PoE power injector, connect an Ethernet cable from the WAP 100AC Ethernet input to the power injector.

B 12 VDC power input — Power supplies must be purchased separately.

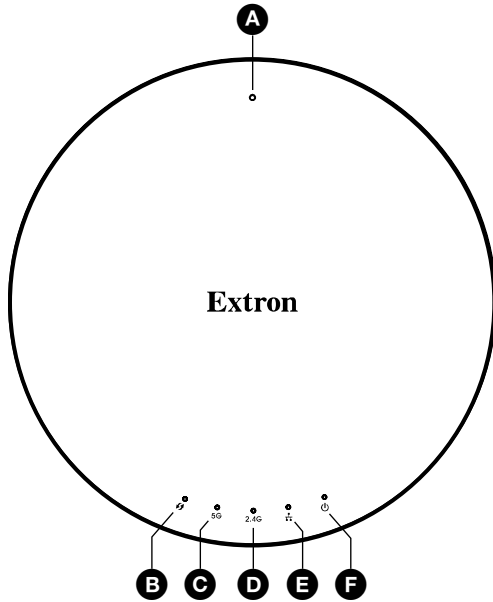
Extron recommends using a PoE power injector. If you wish to use a power supply, connect a 12 VDC, minimum 1.0 A power supply with a DC plug to the power input. See www.extron.com for suitable models.

C Mounting holes (2) — Used to mount the unit to a wall or ceiling (see [Mounting](#) on page 1).

D Cable guide — Ensures cables for power and network connections do not get damaged.

E Kensington security lock — For added security, attach a Kensington Security Lock (not provided) to the metal-reinforced slot on the top of the unit. Follow the instructions that are provided by the manufacturer to install the lock.

Front Panel Features



- A Reset button** — Resets all user settings and reverts back to the factory default state. To carry out this reset, press the reset button for over 10 seconds.
- B WPS LED** — Indicates Wi-Fi Protected Setup is enabled.
- C WLAN 5G LED** — Lights green to indicate that the 5 GHz frequency is in use (IEEE standard 802.11a, n, ac).
- D WLAN 2.4G LED** — Lights blue to indicate that the 2.4 GHz frequency is in use (IEEE standard 802.11b, g, n).
- E Ethernet Port LED** — Lights blue to indicate that the unit is connected to a network.
- F Power LED** — Lights orange to indicate that the unit is receiving power.

Figure 5. WAP 100AC Front Panel

Configuring the WAP 100AC

To configure the WAP 100AC, access the internal Web Pages:

1. Ensure the WAP 100AC is powered on and connected to a network.
2. Open a web browser on a PC connected to the same subnetwork as the WAP 100AC.
3. Enter the IP address of the WAP 100AC in the address bar. By default this is 192.168.1.1.
4. The Login dialog opens (see figure 6).

NOTES:

- The factory configured passwords for all accounts on this device have been set to the device serial number. Passwords are case sensitive.
- If the device is reset to default settings, the password will be the default password configuration. The default password is **extron**.

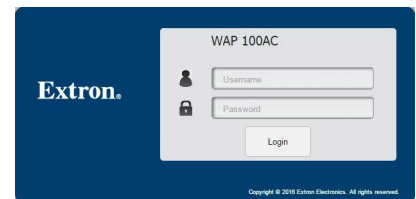


Figure 6. WAP 100AC Login Dialog Box

5. Click **Login**.

The Device Status page opens:

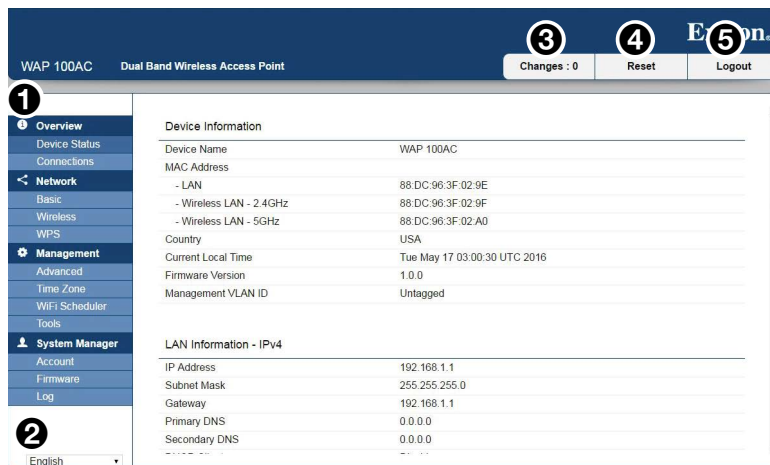


Figure 7. WAP 100AC Web Pages

- 1 Menu** — Allows you to navigate to the appropriate Web page.
- 2 Language** — Allows you to select the language in which the Web pages are presented.
- 3 Changes** — Shows the number of changes made to the Web pages.
- 4 Reset** — Gives you the option to **Reboot the Device, Restore to Factory Defaults, or Restore to User Defaults**.
- 5 Logout** — Shuts down the current session and exits from the Web pages.

For information about using the Web pages to configure the WAP 100AC, to set up a wireless network, and to implement network security measures, see the *WAP 100AC User Guide*, which is available at www.extron.com.

