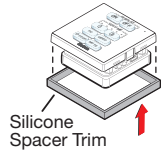


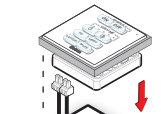
CCM 155 Installation Guide

The CCM 155 is a mounting bracket designed for use with Extron Flex 55 and EU modules. This mounting bracket can be installed in a Cable Cubby 500/650 UT/700/1202/1402, EBP 1200C, or TLP Pro 725C. Follow these steps to assemble and mount the bracket.

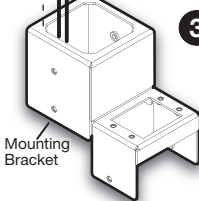
Assemble the CCM 155



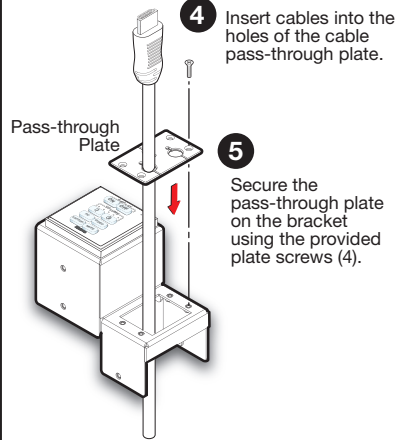
- 1 Insert the silicone spacer under the Flex 55 module.



- 2 Insert all necessary cables through the mounting bracket and connect them to the product ports.



- 3 Insert the Flex 55 assembly into the bracket and press to snap the tabs into place.

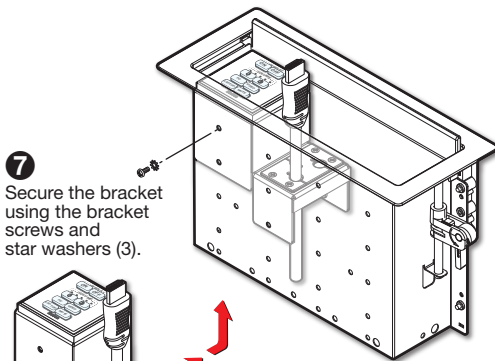


- 4 Insert cables into the holes of the cable pass-through plate.

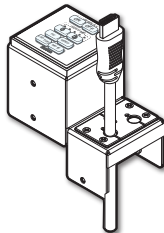
- 5 Secure the pass-through plate on the bracket using the provided plate screws (4).

Mount the CCM 155 into a Cable Cubby Enclosure

Cable Cubby 1202 Example

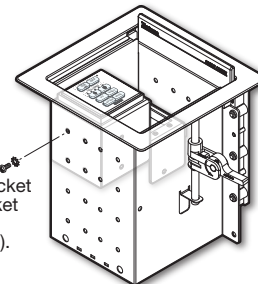


- 7 Secure the bracket using the bracket screws and star washers (3).

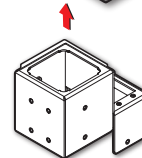


- 6 Insert the bracket through the bottom of the enclosure.

Cable Cubby 500 Example



- 7 Secure the bracket using the bracket screws and star washers (3).



- 6 Insert the bracket through the bottom of the enclosure.

68-2942-50 Rev. C
03 19