

WBA 100 Adapter Plate • Setup Guide

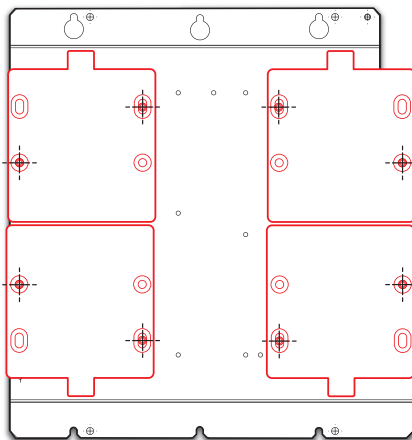
The WBA 100 is an adapter plate that secures to a Chief® PAC526 in-wall box or directly to a flat surface. The adapter plate holds up to four Extron ZipClip 200 mounting clips, or one half-rack product, or a combination of quarter- and eighth-rack products.

Mounting ZipClip 200 Products to the Adapter Plate

Up to four ZipClip 200 mounting clips (not included) can be mounted on the WBA 100, using the designated ZipClip holes on the adapter plate (see the image below). To mount the ZipClip:

1

Align the holes on the ZipClip with the designated holes on the adapter plate.

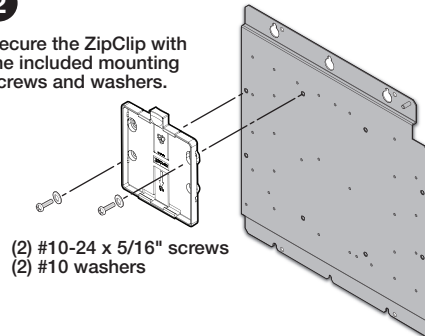


ZipClip 200 (4)

WBA 100

2

Secure the ZipClip with the included mounting screws and washers.



(2) #10-24 x 5/16" screws
(2) #10 washers

Mounting Products to the Adapter Plate

The various mounting holes on the WBA 100 can accommodate a combination of half-, quarter-, and eighth-rack width products, up to 9.5 inches deep. To mount a product:

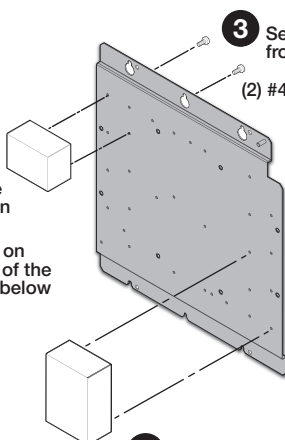
1

Remove any rubber feet attached to the device.

2

Place the device at the edge of the adapter plate and align the mounting holes.

Use the two mounting holes on diagonally opposite corners of the device (see the ATTENTION below for important information).



3 Secure the provided mounting screws from behind the adapter plate.

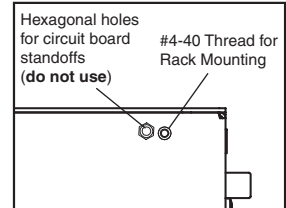
(2) #4-40 x 3/16" screws

4

Mount additional products as necessary.

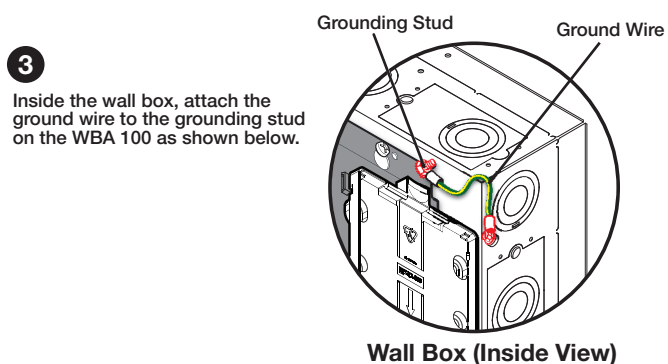
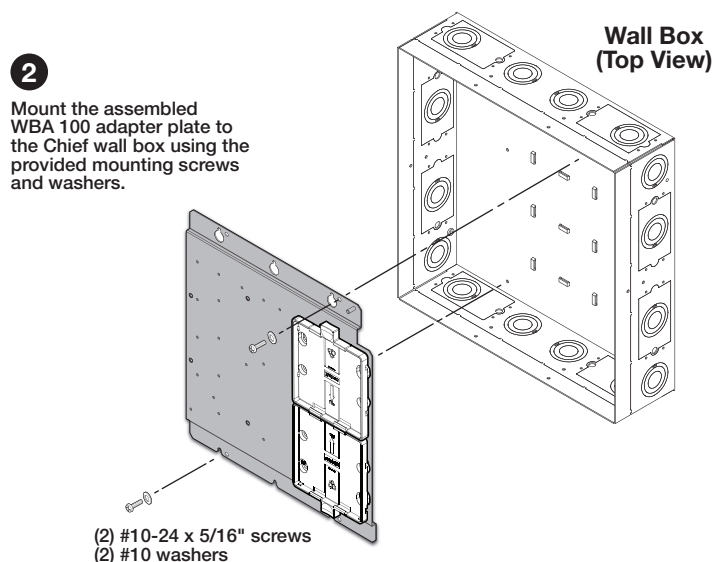
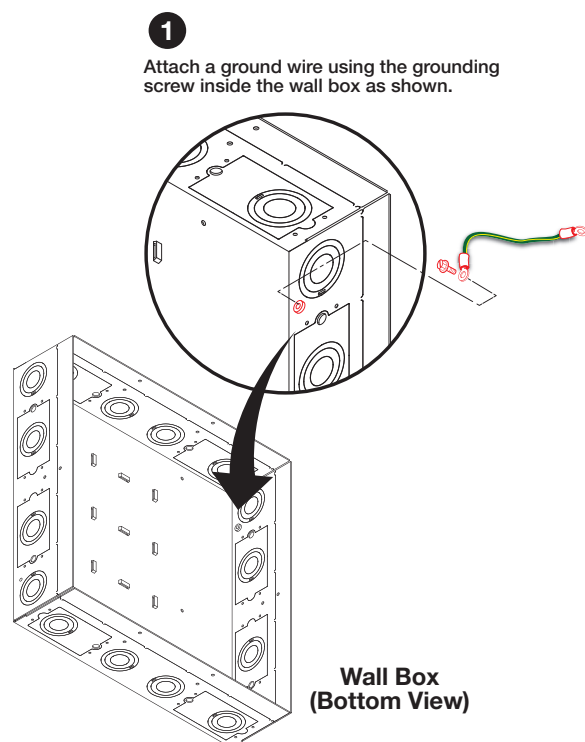
ATTENTION:

- Some products have hexagonal holes in their base, which anchor standoffs for internal circuit boards (see the image at right). Using these holes will damage the product and will not provide secure mounting.
- Certains produits possèdent des ouvertures hexagonales à leur base, qui fixent des entretoises pour des cartes de circuit internes (voir l'image de droite). L'utilisation de ces ouvertures endommagera le produit et n'offrira pas de montage sécurisé.



Mounting the Adapter Plate in a Chief Wall Box

Mount the adapter plate in the Chief wall box as shown below.



Mounting the Adapter Plate on a Wall

The WBA 100 can be mounted on a wall using the two keyholes and two slots for a removable installation, or the four clearance holes for a fixed installation.

The keyhole and slot at the center of the plate can be used for securing the plate to a wall stud.

Mount the adapter plate on the wall using four #10 screws (not included).

