

USB Switchers and Bridges

MediaPort 200 Soft Codec Configuration Guide



Extron Electronics
INTERFACING, SWITCHING AND CONTROL

Conventions Used in this Guide

Notifications

The following notifications are used in this guide:

NOTE: A note draws attention to important information.

Extron Glossary of Terms

A glossary of terms is available at <http://www.extron.com/technology/glossary.aspx>

Copyright

© 2016 Extron Electronics. All rights reserved.

Trademarks

All trademarks mentioned in this guide are the properties of their respective owners.

The following registered trademarks[®], registered service marksSM, and trademarksTM are the property of RGB Systems, Inc. or Extron Electronics:

Registered Trademarks [®]
AVTrac, Cable Cubby, CrossPoint, DTP, eBUS, EDID Manager, EDID Minder, Extron, Flat Field, FlexOS, Global Configurator, GlobalViewer, Hideaway, Inline, IP Intercom, IP Link, Key Minder, LockIt, MediaLink, MediaPort, PlenumVault, PoleVault, PowerCage, Pure3, Quantum, SoundField, SpeedMount, SpeedSwitch, System <i>INTEGRATOR</i> , TeamWork, TouchLink, V-Lock, VersaTools, VN-Matrix, VoiceLift, WallVault, WindoWall, XTP, and XTP Systems
Registered Service MarkSM : S3 Service Support Solutions
Trademarks TM
AAP, AFL (Accu-Rate Frame Lock), ADSP (Advanced Digital Sync Processing), Auto-Image, CableCover, CDRS (Class D Ripple Suppression), DDSP (Digital Display Sync Processing), DMI (Dynamic Motion Interpolation), Driver Configurator, DSP Configurator, DSVP (Digital Sync Validation Processing), eLink, Entwine, EQIP, FastBite, FOX, FOXBOX, IP Intercom HelpDesk, LinkLicense, MAAAP, MicroDigital, NetPA, ProDSP, QS-FPC (QuickSwitch Front Panel Controller), Room Agent, Scope-Trigger, ShareLink, SIS, Simple Instruction Set, Skew-Free, SpeedNav, Triple-Action Switching, WebShare, XTRA, ZipCaddy, ZipClip

Contents

Conventions Used in this Guide	ii
Notifications.....	ii
Extron Glossary of Terms.....	ii
<hr/>	
Introduction	1
<hr/>	
Cisco WebEx.....	2
Overview	2
Video Input Configuration	2
Audio Output and Input Configuration.....	3
<hr/>	
Google Hangouts	5
Overview	5
Video Input Configuration	6
Audio Input and Output Configuration.....	7
<hr/>	
Zoom.us.....	9
Overview	9
Video Input Configuration	9
Audio Input and Output Configuration.....	10
<hr/>	
Adobe Connect	12
Overview	12
Video Input Configuration	12
Audio Input Configuration	13
Audio Output Configuration	13
Muting Program Audio to Far End.....	14
<hr/>	
Apple FaceTime.....	15
Overview	15
Video Input Configuration	15
Audio Input Configuration	16
Muting Program Audio to Far End.....	16

Introduction

This guide is designed to cover the audio and video configuration required for the MediaPort 200 when using a web-based or alternative soft codec conferencing application. The following applications are discussed:

- [Cisco WebEx](#)
- [Google Hangouts](#)
- [Zoom.us](#)
- [Adobe Connect](#)
- [Apple FaceTime](#)

Cisco WebEx

Overview

Cisco WebEx is a commonly used web-based soft codec application that requires assigning of video input, audio input, and audio output. This section will provide step by step instructions on how to configure WebEx to function properly with MediaPort 200.

NOTE: This section gives instructions with the Mediaport 200 in Standalone audio mode. Should the MediaPort 200 be in External DSP with AEC audio mode, instead of enumerating as a *Speakerphone* it will enumerate as an *Echo Cancelling Speakerphone*.

Video Input Configuration

1. From the main meeting workspace, select the gear icon in the top right corner in the *Participants* panel (see figure 1, ① below).

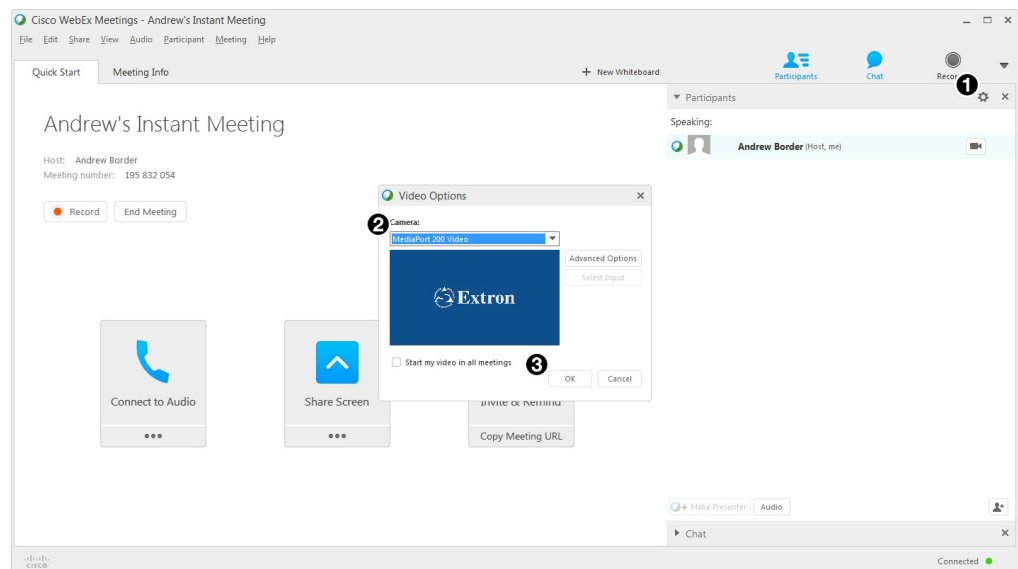


Figure 1. WebEx Video Input Configuration

2. From the *Video Options* dialog box that appears, select the *Camera* drop-down list (②) and select **MediaPort 200 Video**.

NOTE: If no other camera device is connected to the host computer, **MediaPort 200** will be the only option available from the *Camera* drop-down list.

3. Confirm the MediaPort 200 as the video input source by selecting **OK** (③).

Audio Output and Input Configuration

1. From the main meeting workspace, place the cursor over the *Connect to Audio* panel. Select **More** (see figure 2, ① below).
2. In the *Audio Connection* panel that appears, select **Test Computer Audio** (②).

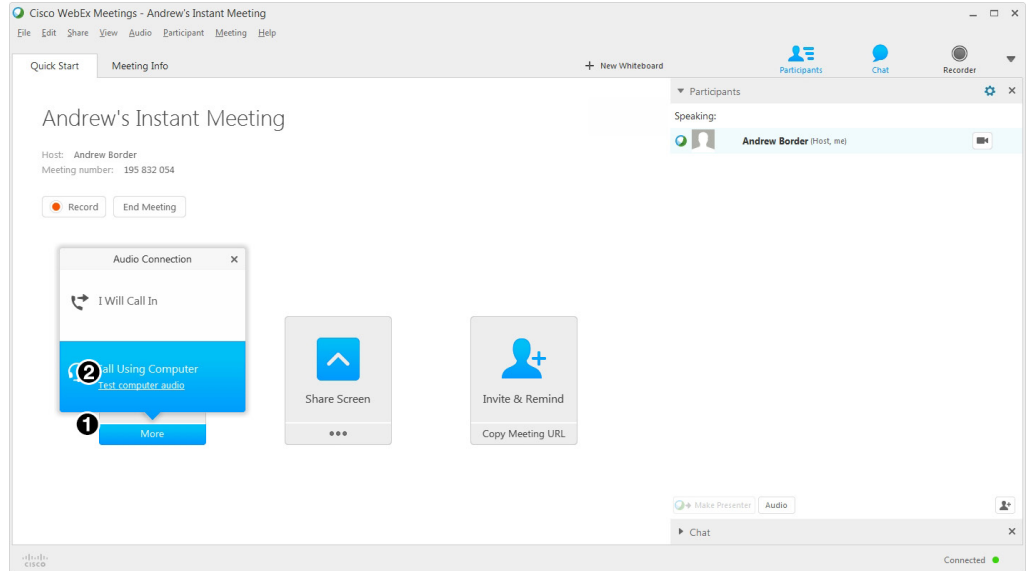


Figure 2. Accessing the WebEx Audio Options

3. From the *Test Computer Audio* panel that appears, select the *Speaker* drop-down list (see figure 3, ③ below).
4. Select **Speakerphone (Extron MediaPort 200)** (④) from the drop-down list.
5. The level slider under *Speaker* should remain all the way to the right to ensure best audio quality.

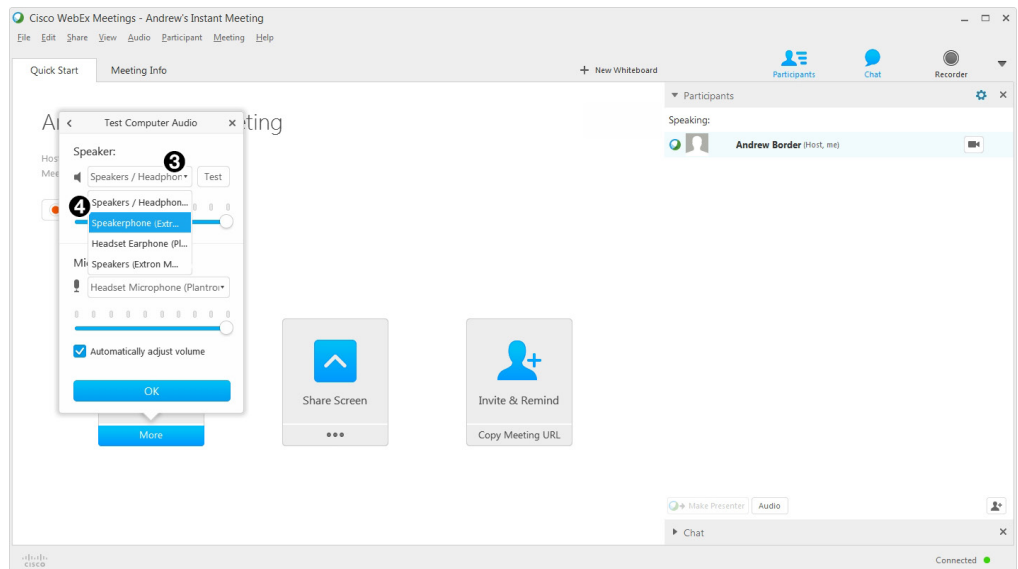


Figure 3. WebEx Audio Output Configuration

6. Select the *Microphone* drop-down list to access available audio inputs (see figure 4, 5 below).
7. Select **Speakerphone (Extron MediaPort 200)** (6).
8. Ensure the *Automatically adjust volume* checkbox (7) is checked.
9. Select **OK** (8) at the bottom of the *Test Computer Audio* panel to confirm and save configuration settings.
10. The level slider under *Microphone* should remain all the way to the right to ensure best audio quality.

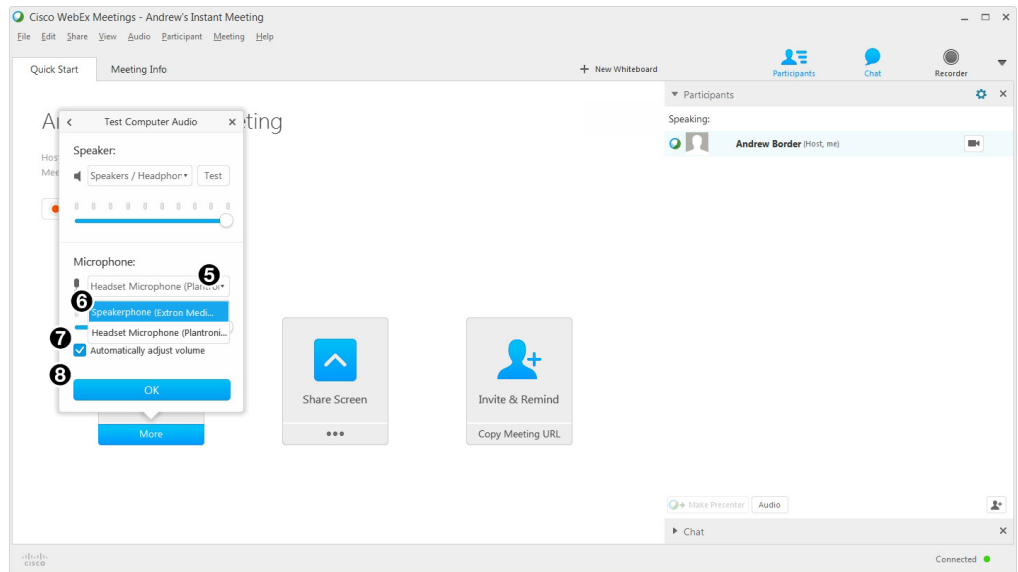


Figure 4. WebEx Audio Input Configuration

11. When all audio settings are confirmed, the audio panel will display a green headset with the message *Connected to Audio* (see figure 5 below).

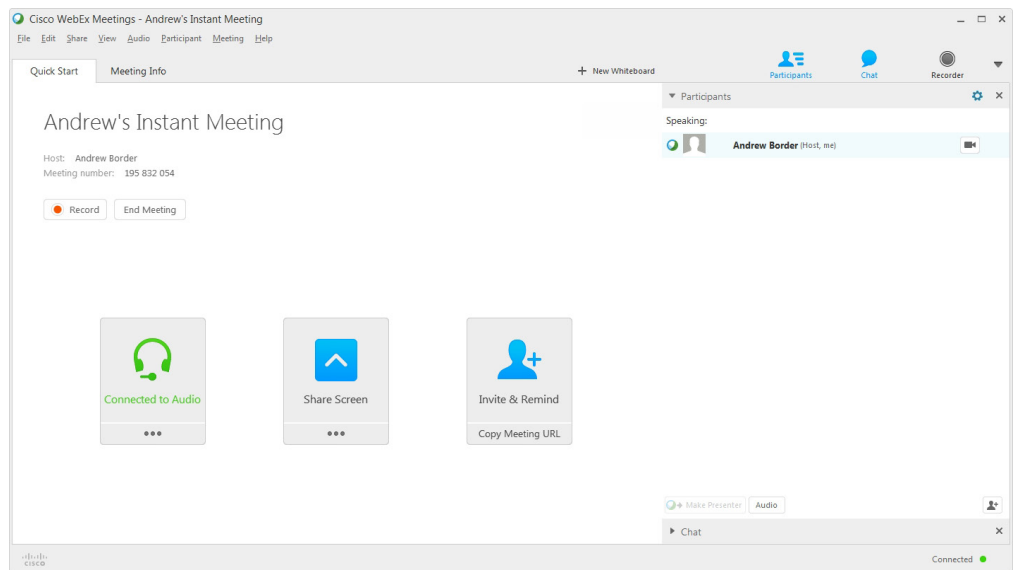


Figure 5. Connected to Audio Confirmation

Google Hangouts

Overview

Google Hangouts is a commonly used web-based soft codec application that requires assigning of video input, audio input, and audio output. This section will provide step by step instructions on how to configure Hangouts to function properly with MediaPort 200.

NOTE: This section gives instructions with the Mediaport 200 in Standalone audio mode. Should the MediaPort 200 be in External DSP with AEC audio mode, instead of enumerating as a *Speakerphone* it will enumerate as an *Echo Cancelling Speakerphone*.

In order to access the MediaPort 200, Google Hangout must be given access to the local computer's video and audio inputs and outputs. Select **Allow** in the top left corner of the Hangouts call screen (see figure 6 below).

NOTE: Camera and microphone permissions only need to be granted the first time Google Hangouts is opened.

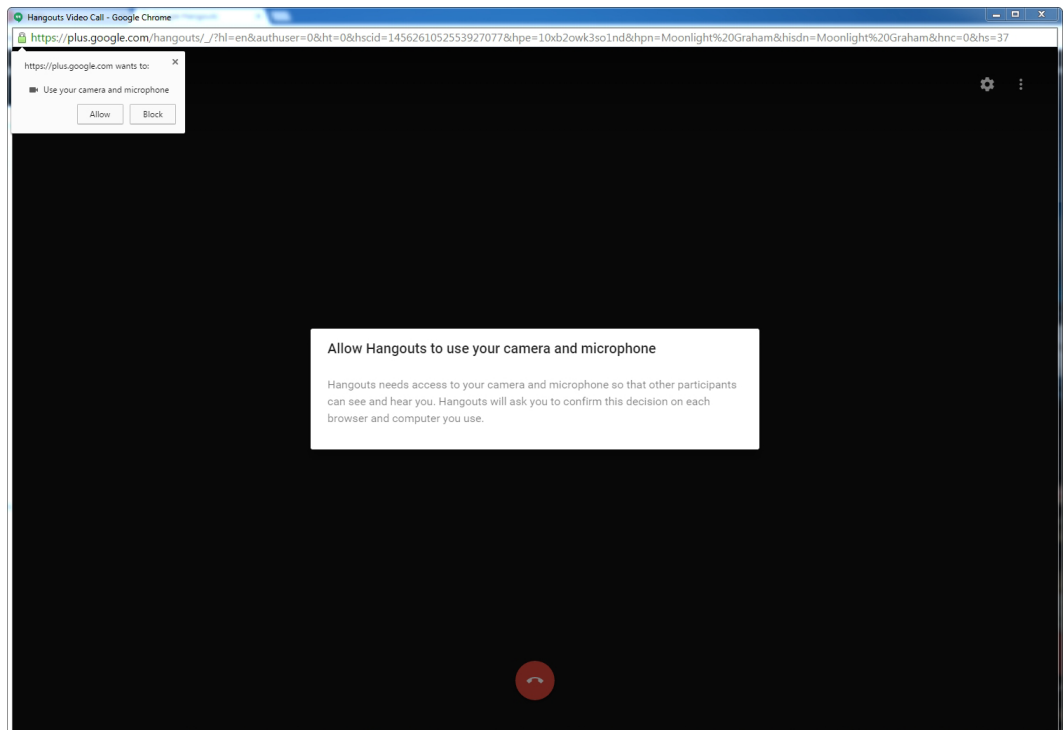


Figure 6. Allow Hangouts Camera and Microphone Permissions

Video Input Configuration

1. From the main call screen, select the gear icon in the top right corner (see figure 7, ① below).
2. From the *General* dialog box that appears, ensure that **MediaPort 200 Video** (②) is selected from the *Video* drop-down list.

NOTE: **MediaPort 200 Video** will be the default selection from the *Video* drop-down list if no other video input source is connected to the host computer.

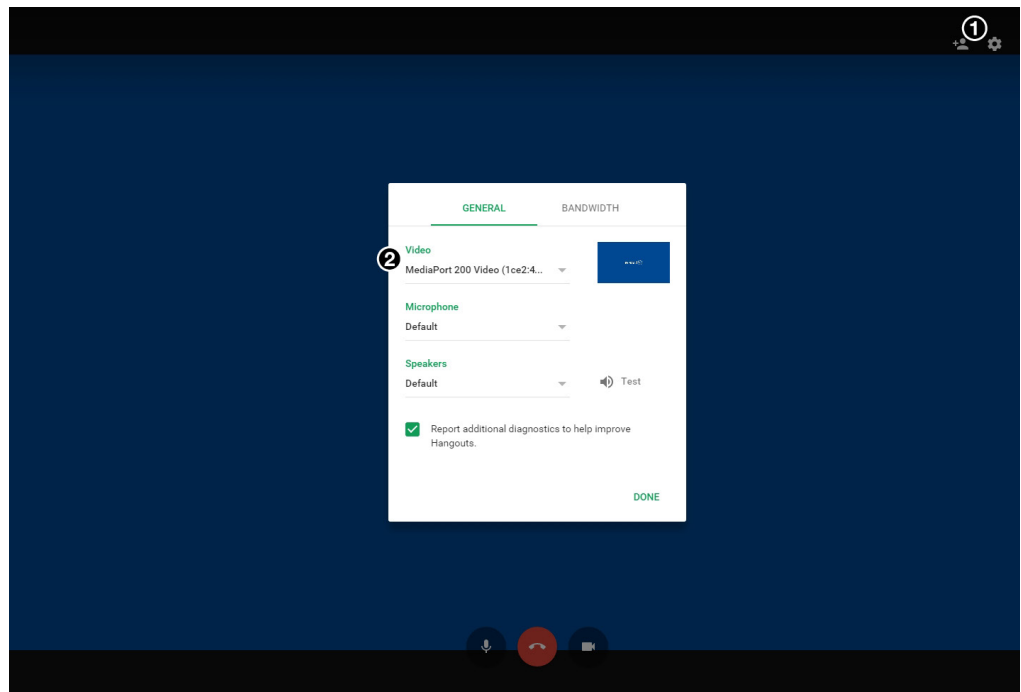


Figure 7. Hangouts Video Input Configuration

NOTE:

- Once **MediaPort 200 Video** has been selected as the video input for Hangouts, either a live preview from the HDMI input on the MediaPort or the No Signal Indicator screen will appear.
- Google Hangouts mirrors the video preview to aid in framing the camera.

Audio Input and Output Configuration

1. From the *Microphone* drop-down list, select **Speakerphone Extron MediaPort 200** (see figure 8, ❶ below).

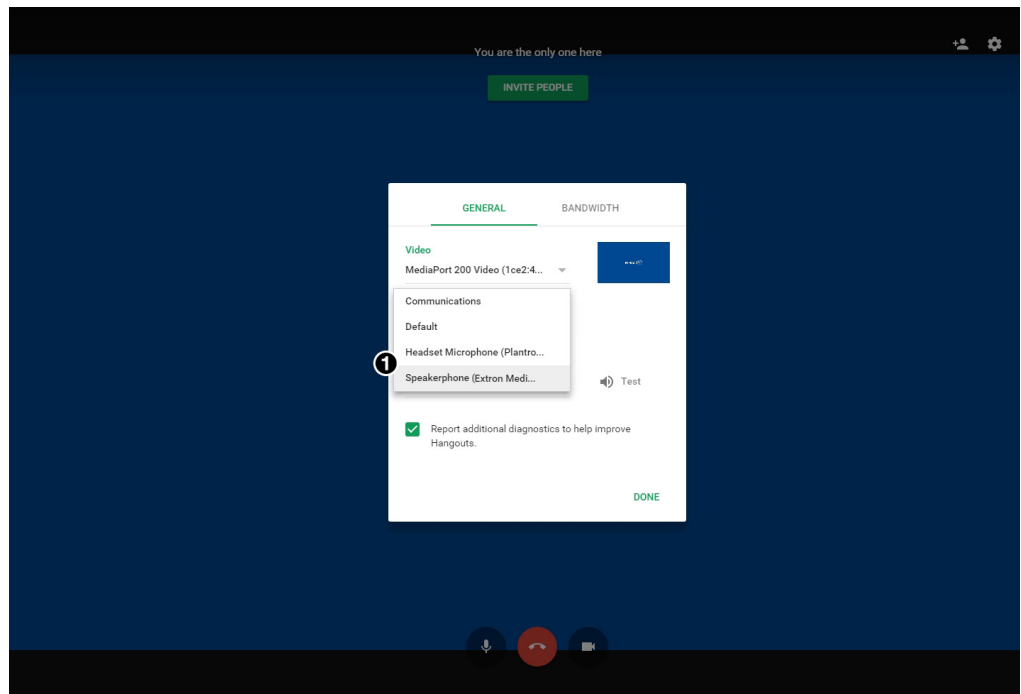


Figure 8. Hangouts Audio Input Configuration

2. From the *Speakers* drop-down list, select **Speakerphone Extron MediaPort 200** (see figure 9, ❷ below).

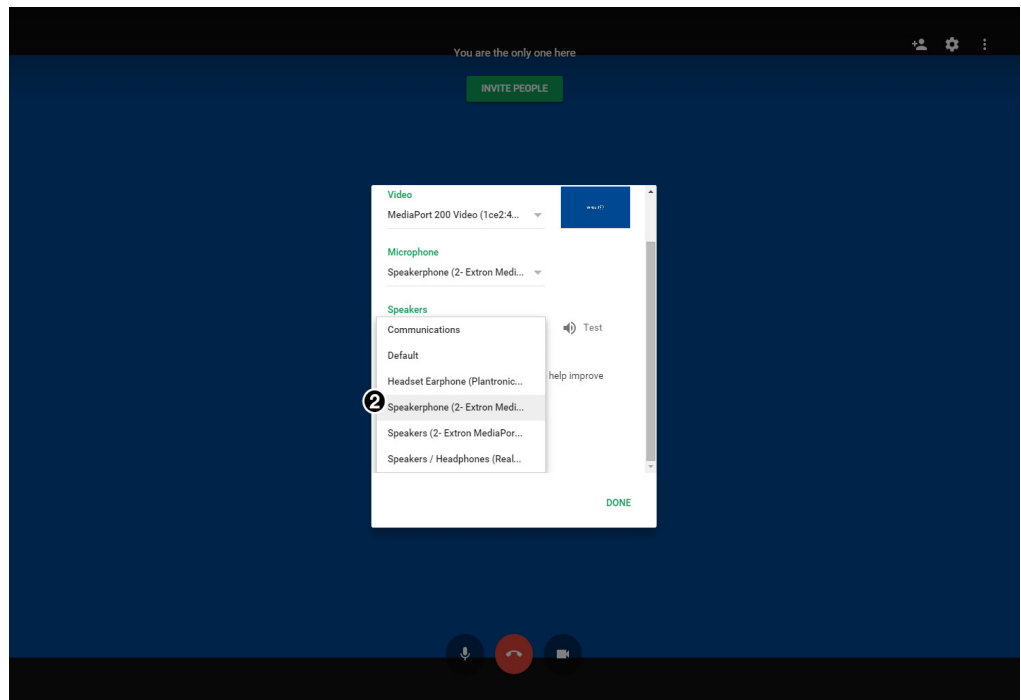


Figure 9. Hangouts Audio Output Configuration

3. Once all input and output settings have been configured, select **DONE** to confirm and save settings (see figure 10, ③ below).

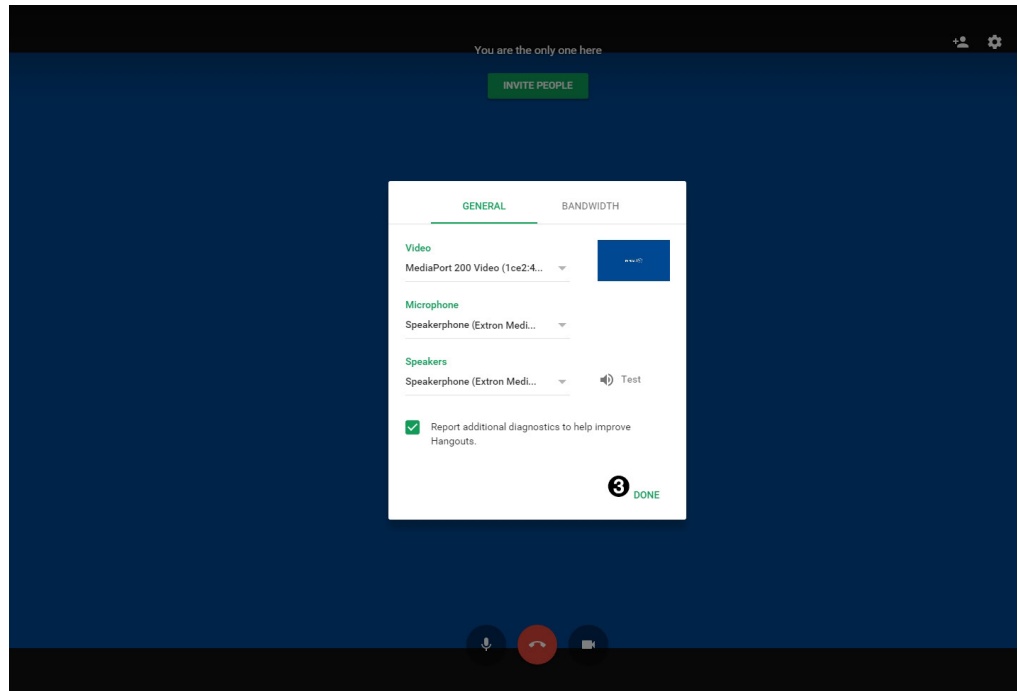


Figure 10. Confirm Hangouts Configuration

Zoom.us

Overview

Zoom is a commonly used web-based soft codec application that requires assigning of video input, audio output, and audio input. This section will provide step by step instructions on how to configure Zoom to function properly with MediaPort 200.

NOTE: This section gives instructions with the Mediaport 200 in Standalone audio mode. Should the MediaPort 200 be in External DSP with AEC audio mode, instead of enumerating as a *Speakerphone* it will enumerate as an *Echo Cancelling Speakerphone*.

Video Input Configuration

1. From the main meeting workspace, select the pop-up list option next to the video icon (see figure 11, ① below).
2. From the pop-up list select **MediaPort 200 Video** (②).

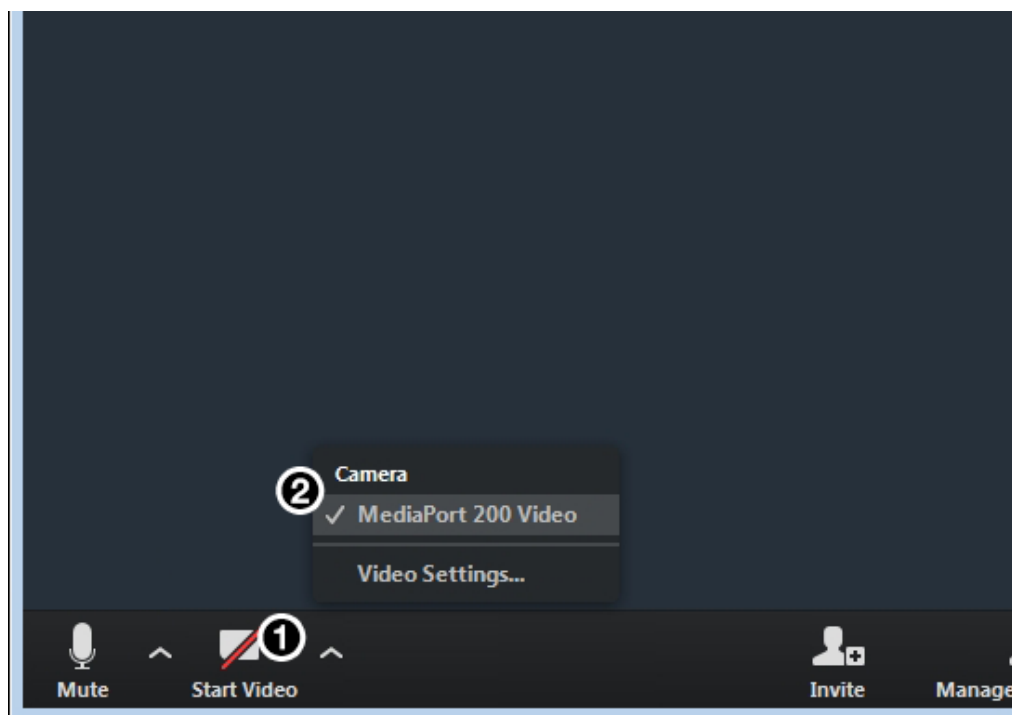


Figure 11. Zoom Video Input Configuration

NOTE:

- Once **MediaPort 200 Video** has been selected as the video input for Zoom, either a live preview from the HDMI input on the MediaPort or the No Signal Indicator screen will appear.
- Zoom mirrors the video preview to aid in framing the camera.

Audio Input and Output Configuration

1. From the main meeting space, select the pop-up list located next to the microphone icon (see figure 12, ① below).
2. Under the *Microphone* section of the pop-up list, ensure **Speakerphone (Extron MediaPort 200)** is selected (②).

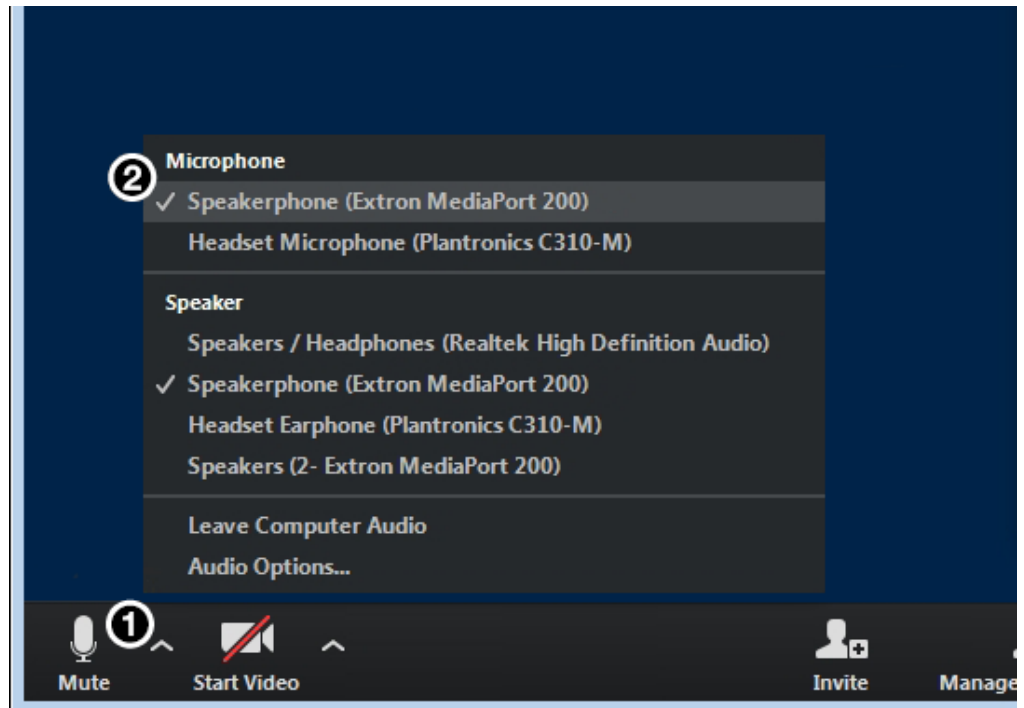


Figure 12. Zoom Audio Input Configuration

3. After selecting the audio input source, reselect the pop-up list located next to the microphone icon (see figure 13, ③ below).
4. Under the *Speaker* section of the pop-up list, ensure **Speakerphone (Extron MediaPort 200)** is selected (④).

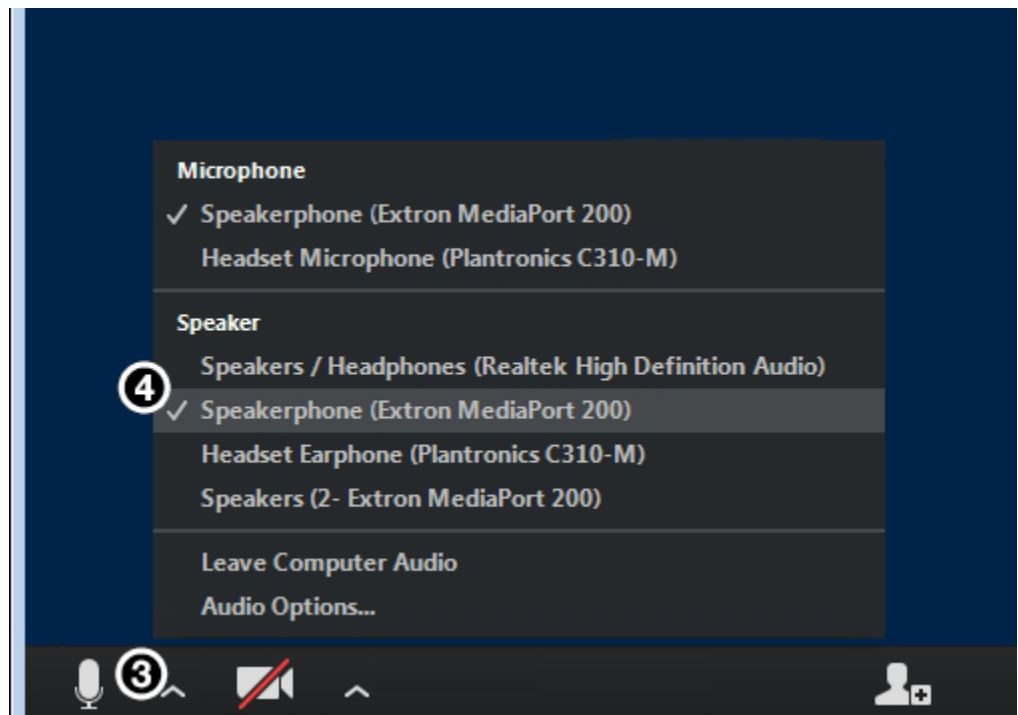


Figure 13. Zoom Audio Output Configuration

Adobe Connect

Overview

Adobe Connect is a commonly used web-based soft codec application that requires assigning of video input and audio input. This section will provide step by step instructions on how to configure Connect to function properly with MediaPort 200.

NOTE: This section gives instructions with the Mediaport 200 in Standalone audio mode. Should the MediaPort 200 be in External DSP with AEC audio mode, instead of enumerating as a *Speakerphone* it will enumerate as an *Echo Cancelling Speakerphone*.

Video Input Configuration

1. From the main meeting workspace, select the drop-down list next to the camera icon at the top of the screen (see figure 14, ① below).
2. From the drop-down list, choose **Select Camera** (②).
3. Select **MediaPort 200 Video**.

NOTE: If there is no other video input source connected to the host computer, **MediaPort 200 Video** will be the default selection.

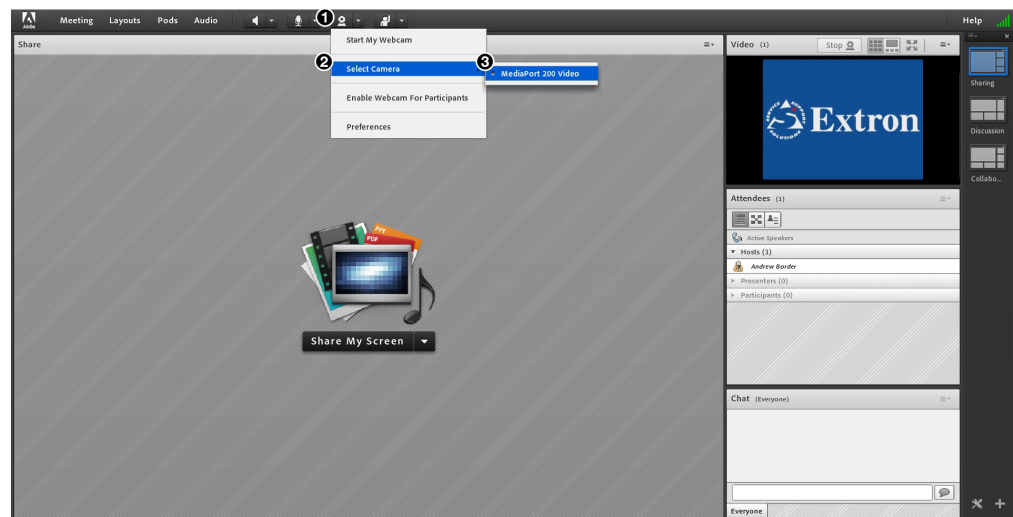


Figure 14. Connect Video Input Configuration

NOTE: Once **MediaPort 200 Video** has been selected as the video input for Zoom, either a live preview from the HDMI input on the MediaPort or the No Signal Indicator screen will appear.

Audio Input Configuration

1. From the main meeting workspace select the drop-down list next to the microphone icon (see figure 15, ① below).
2. From the drop-down list, choose **Select Microphone** (②).
3. Select **Speakerphone (MediaPort 200)** (③).

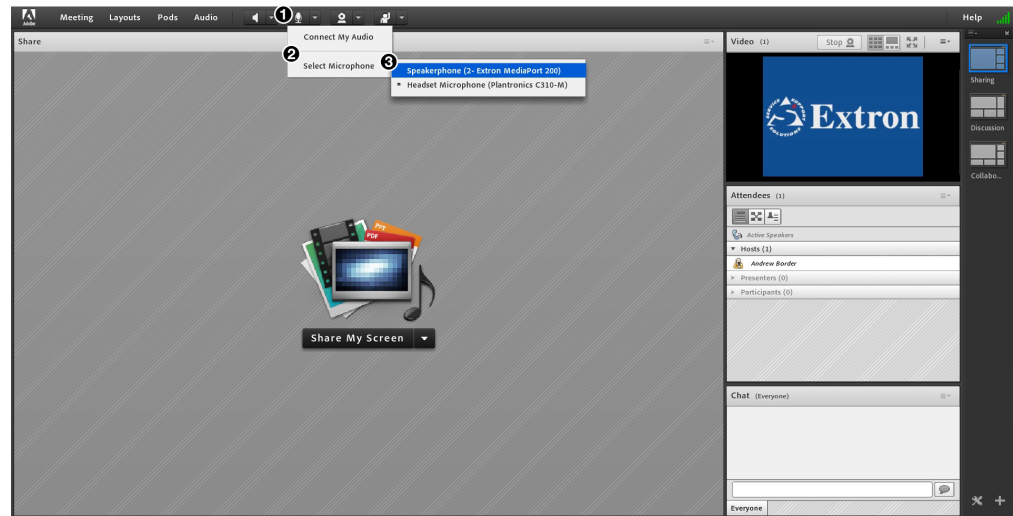


Figure 15. Connect Audio Input Configuration

Audio Output Configuration

In the Adobe Connect web-based conferencing application, the application's default audio output mirrors the default playback device selected for Windows. To ensure proper speaker volume:

1. From the main meeting workspace, select the drop-down list next to the speaker icon (see figure 16, ③ below).
2. From the drop-down list, select **Adjust Speaker Volume** (④).
3. Ensure the speaker volume slider (⑤) is as far right as possible toward *High* to ensure best audio quality.
4. Select **OK** to confirm and save configuration (⑥).

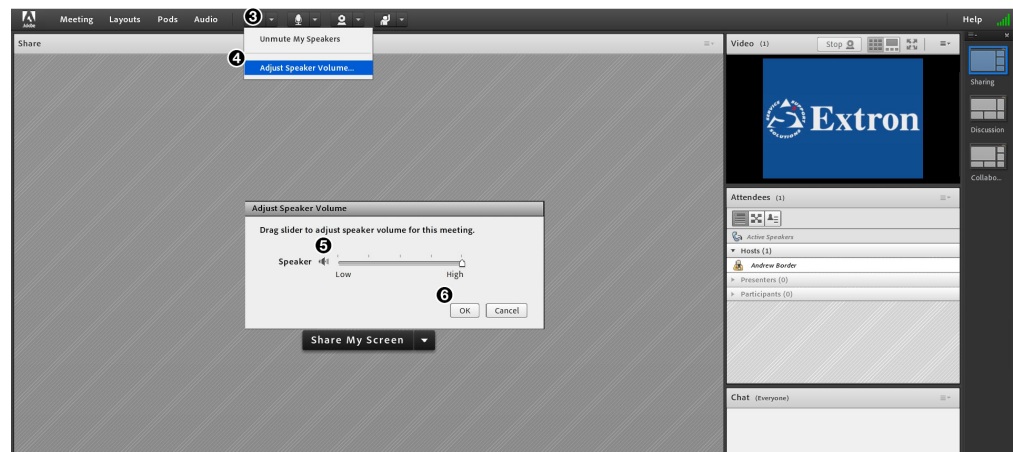


Figure 16. Adjust Speaker Volume

Muting Program Audio to Far End

Adobe Connect does not allow the host computer's operating system to differentiate between USB Communications audio and USB Playback audio. All audio from the host computer is recognized as USB Playback audio. To avoid creating a feedback loop with the USB Playback audio, Program audio to the far end must be muted in PCS. By muting Program audio to the Far End, audio from the **HDMI**, **Line**, and **USB Playback** inputs will not be sent to the far end.

1. Open the Extron PCS software. From the *Device Discovery* screen select the MediaPort to be configured (see figure 17, **1** below) then select **Connect** (**2**).

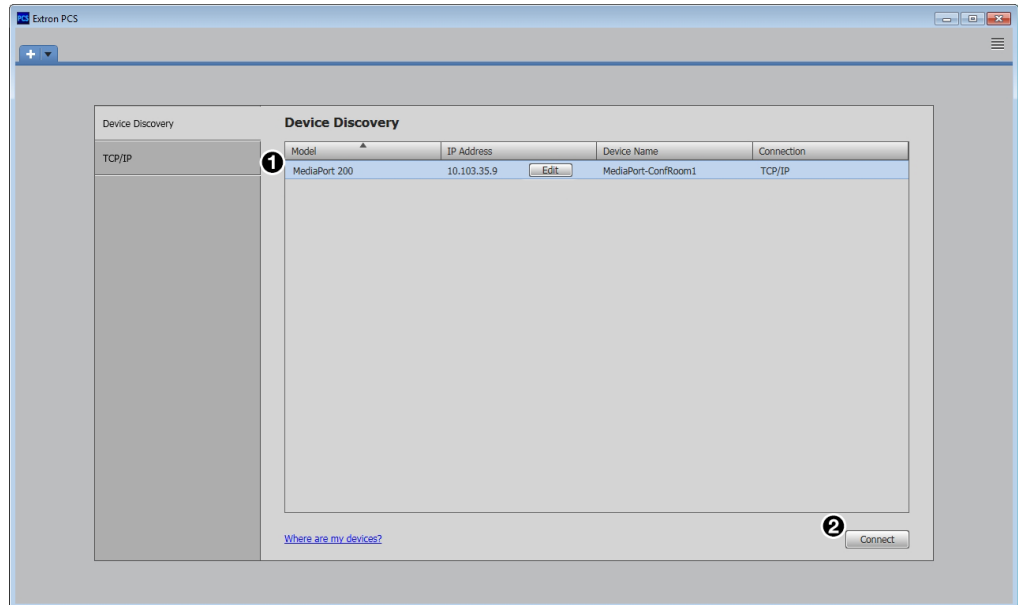


Figure 17. PCS Device Discovery

2. From the MediaPort 200 main screen, select **Audio Config** (see figure 18, **3** below), then select the **Mix** tab (**4**), and finally, select **Mute** under the *Program* section of the *Mix to Far End* panel (**5**).

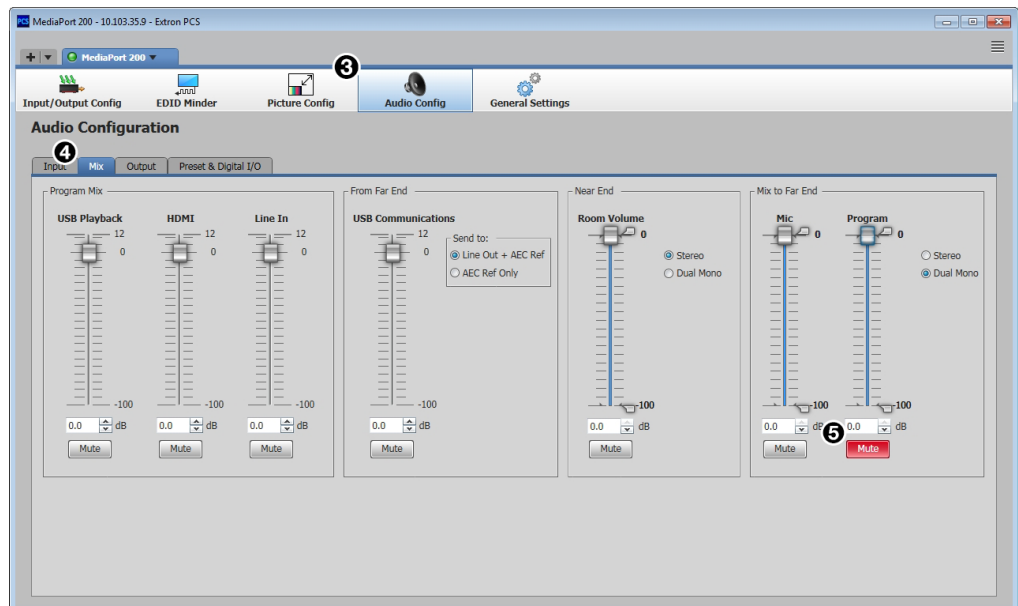


Figure 18. Mute Program Mix to Far End

Apple FaceTime

Overview

Apple FaceTime is a commonly used soft codec application that requires assigning of video input, and audio input. This section will provide step by step instructions on how to configure FaceTime to function properly with MediaPort 200.

NOTE: This section gives instructions with the MediaPort 200 in Standalone audio mode. Should the MediaPort 200 be in External DSP with AEC audio mode, instead of enumerating as a *Speakerphone* it will enumerate as an *Echo Cancelling Speakerphone*.

Video Input Configuration

1. In the FaceTime application menu bar, select **Video** (see figure 19, ❶ below).
2. From the *Video* drop-down list, select **Extron MediaPort 200** under the *Camera* section of the list (❷).



Figure 19. FaceTime Select Video Input

NOTE:

- Once **MediaPort 200 Video** has been selected as the video input for FaceTime, either a live preview from the HDMI input on the MediaPort or the No Signal Indicator screen will appear.
- FaceTime mirrors the video preview to aid in framing the camera.

Audio Input Configuration

1. In the FaceTime application menu bar, select **Video** (see figure 20, ❶ below).
2. From the *Video* drop-down list, select **Extron MediaPort 200** under the *Microphone* section of the list (❷).

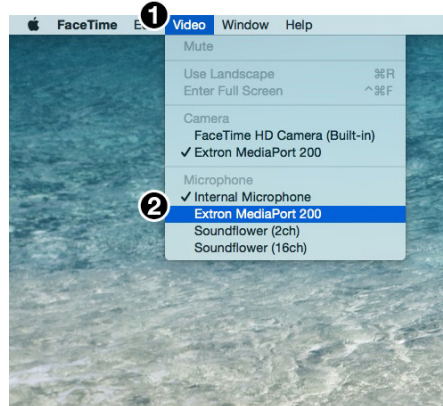


Figure 20. FaceTime Select Audio Input

3. When audio and video input devices have been set in FaceTime, there should be a check mark next to *Extron MediaPort 200* under both the *Camera* and *Microphone* list to indicate configuration has been properly completed (see figure 21, below).

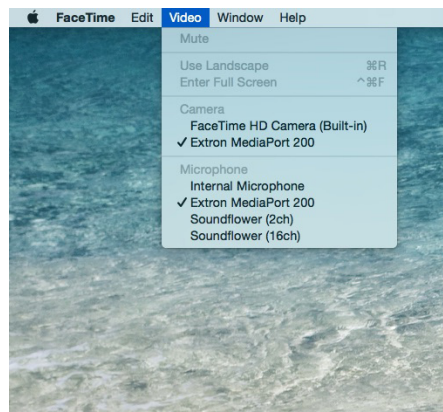


Figure 21. FaceTime Configuration Complete

Muting Program Audio to Far End

FaceTime does not allow the host computer's operating system to differentiate between USB Communications audio and USB Playback audio. All audio from the host computer is recognized as USB Playback audio. To avoid creating a feedback loop with the USB Playback audio, Program audio to the far end must be muted in PCS. By muting Program audio to the Far End, audio from the **HDMI**, **Line**, and **USB Playback** inputs will not be sent to the far end.

NOTE: PCS is not available for Mac OSX. Connect a computer running Windows with Extron PCS installed to the USB Config port or LAN port of the MediaPort to complete the following steps.

1. Open the Extron PCS software. From the *Device Discovery* screen select the MediaPort to be configured (see figure 22, ❶ below) then select **Connect** (❷).

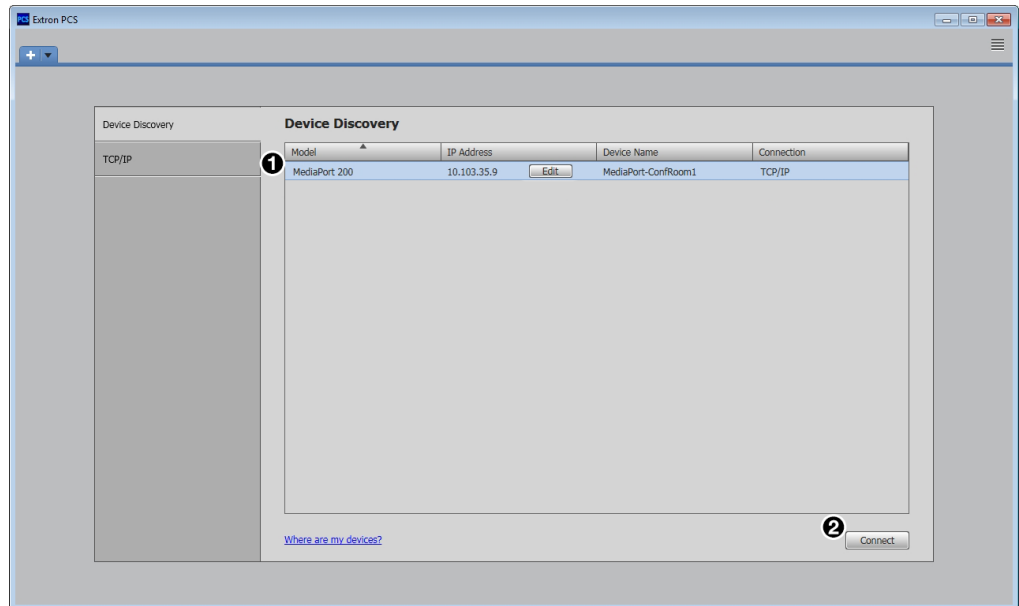


Figure 22. PCS Device Discovery

2. From the MediaPort 200 main screen, select **Audio Config** (see figure 23, ❸ below), then select the **Mix** tab (❹), and finally, select **Mute** under the *Program* section of the *Mix to Far End* panel (❺).

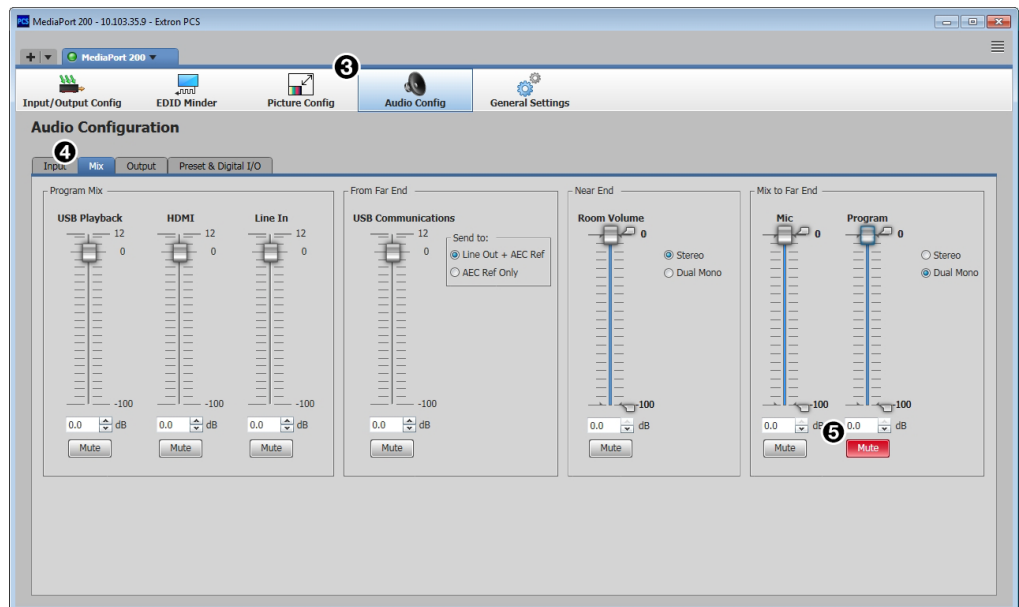


Figure 23. Mute Program Mix to Far End