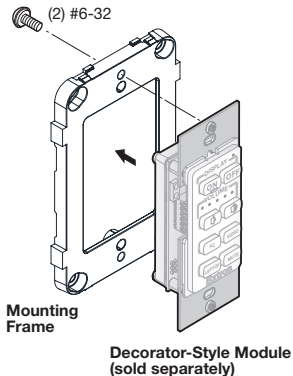


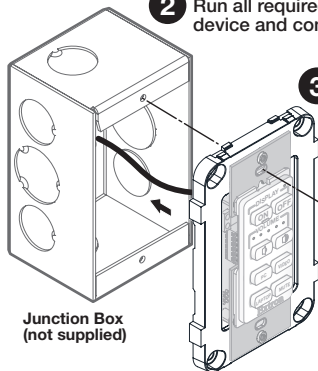
## WPA 100 AUS Setup Guide

The Extron WPA 100 AUS is a single-gang Clipsal®-compatible mounting frame and wallplate that accommodates one decorator-style module (see [www.extron.com](http://www.extron.com) for decorator-style module options and part numbers). Follow the instructions below to assemble the mounting frame and wallplate using the included screws.

- 1 Secure the module to the mounting frame as shown below.



- 2 Run all required cables from the output or input device and connect them to the module.



- 3 Secure the mounting frame to the junction box.

- 4 Snap the wallplate on the mounting frame.

