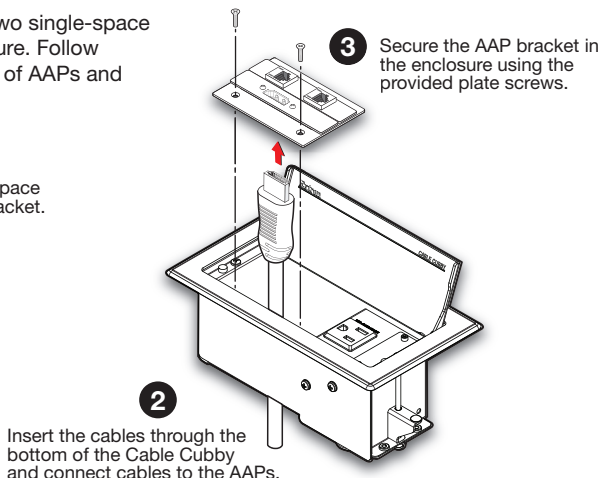
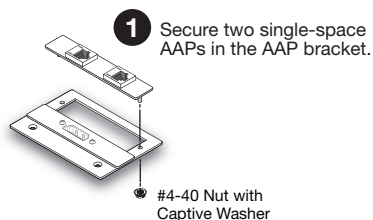


Accessories for Cable Cubby 202 • Setup Guide

This guide provides instructions for assembling and installing two accessories for the Cable Cubby 202: the double-space AAP bracket and the Retractor bracket.

AAP Bracket

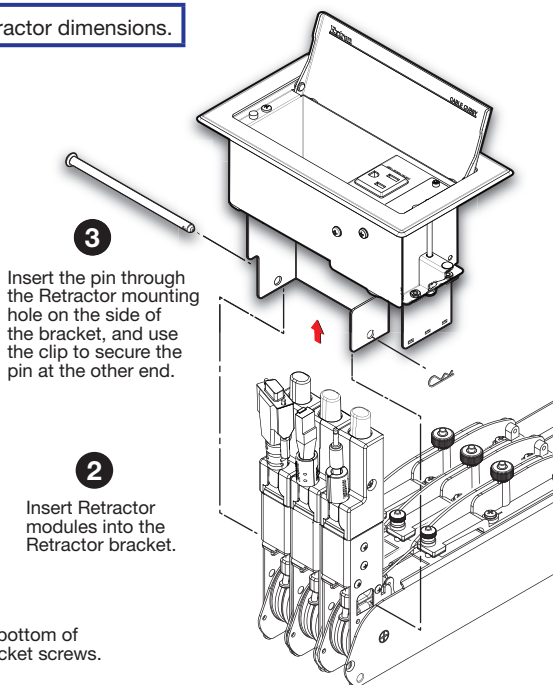
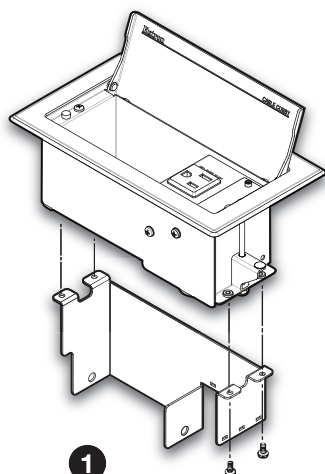
The AAP bracket accommodates two single-space AAPs in the Cable Cubby enclosure. Follow these steps to install your choice of AAPs and the AAP bracket.



Retractor Bracket

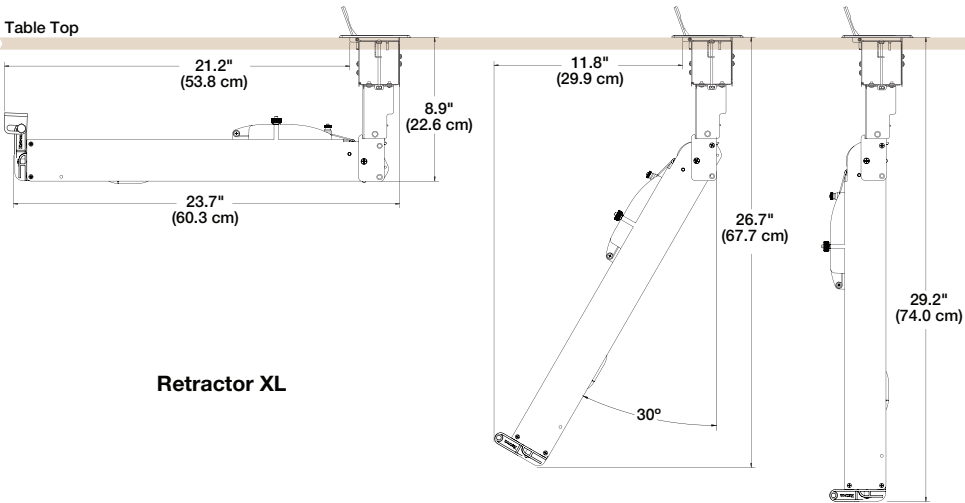
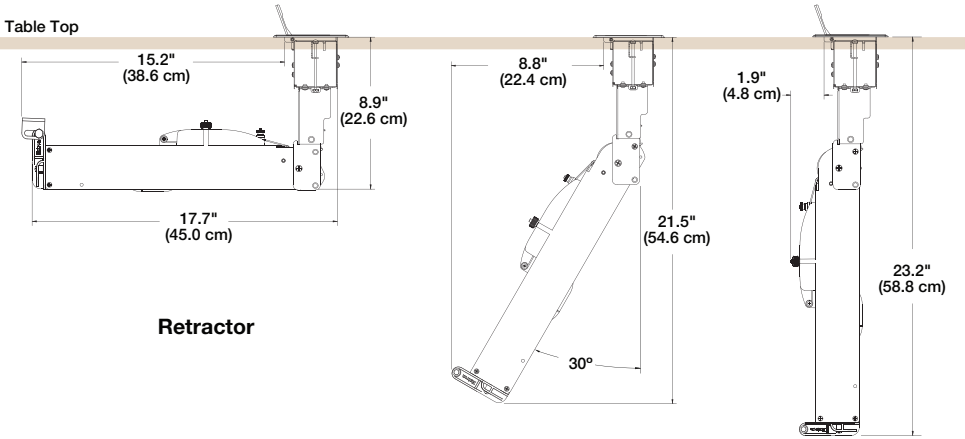
The Retractor bracket accommodates up to three Retractor modules in the Cable Cubby enclosure. Follow the steps below to install the bracket and Retractor modules.

NOTE: See the next page for Retractor dimensions.



Retractor Dimensions

When installing Retractor modules in the Cable Cubby, ensure that there is enough space for the Retractor assembly under the table (see the Retractor dimensions below).



68-2487-01
Rev. B
06 16

Extron Headquarters +1.800.633.9876 (Inside USA/Canada Only)		Extron Europe +800.3987.6673 (Inside Europe Only)	Extron Asia +65.6383.4400 FAX: +65.6383.4664	Extron Japan +81.3.3511.7655 FAX: +81.3.3511.7656	Extron China +86.21.3760.1568 FAX: +86.21.3760.1566	Extron India 1800.3070.3777 (Inside India Only) +91.80.3055.3777 FAX: +91.80.3055.3737
Extron USA - West +1.714.491.1500 FAX: +1.714.491.1517	Extron USA - East +1.919.850.1000 FAX: +1.919.850.1001	+31.33.453.4040 FAX: +31.33.453.4050		Extron Middle East +971.4.299.1800 FAX: +971.4.299.1880		Extron Australia +61.8.8351.2188 FAX: +61.8.8351.2511