

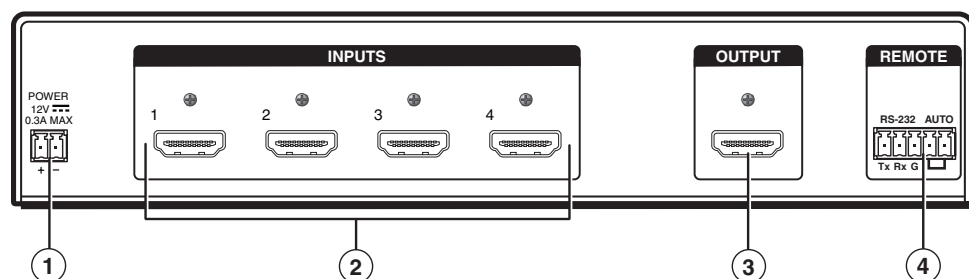
SW HDMI Series • Setup Guide

IMPORTANT:
Refer to www.extron.com for the complete user manual and installation instructions before connecting the product to the power source.

The Extron SW HDMI Series are two and four input, one output, High-definition Multimedia Interface (HDMI) switchers that allow multiple HDMI signals, including digital video, 3D signals, and embedded multi-channel digital audio to be switched to one compatible display. These switchers support all standard single link HDMI (up to 225 MHz) and DVI 1.0 signal formats and are compatible, at 60 Hz, with all HDTV resolutions up to 1080p and PC resolutions up to 1920x1200, with 12-bit color. They are fully HDCP compliant. This guide provides basic instructions for an experienced installer to set up and operate these switchers.

NOTE: For full installation, configuration, and operation details, see the *SW HDMI Series User Guide*, available at www.extron.com.

Rear Panel Features and Connections

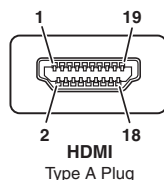
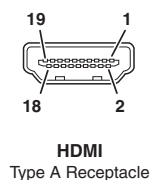


- ① Power connector for 12 VDC, 1 A power supply
- ② HDMI input connectors
- ③ HDMI output connector
- ④ Remote and auto-input switching connector

Installation Steps

1. **Turn off all of the equipment** and disconnect it from the power source.
2. (Optional) **Mount the switcher** on a rack shelf or furniture.
3. **Connect HDMI input sources** to one or more of the SW HDMI input connectors (② on the rear panel diagram above).

NOTE: LockIt® cable lacing brackets, one for each HDMI input and output connector, are provided with the SW HDMI. These brackets can be used to secure the HDMI cables to the rear panel connectors to reduce stress on the HDMI connectors and prevent signal loss due to loose cable connections. For information on attaching the LockIt brackets, see the *LockIt HDMI Lacing Bracket Installation Guide* card, available on the Extron website at www.extron.com.



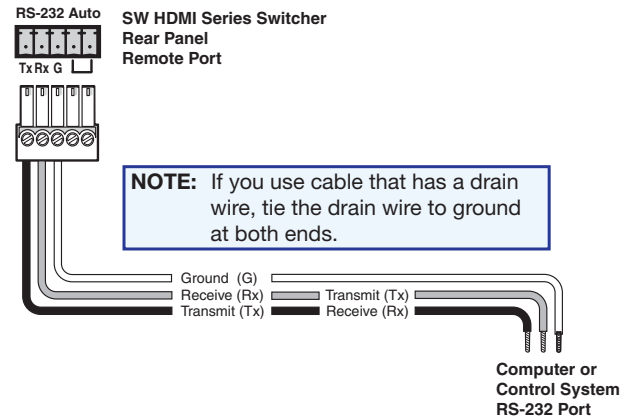
Pin	Signal	Pin	Signal	Pin	Signal
1	TMDS data 2+	7	TMDS data 0+	13	CEC*
2	TMDS data 2 shield	8	TMDS data 0 shield	14	Reserved (NC)
3	TMDS data 2-	9	TMDS data 0-	15	SCL
4	TMDS data 1+	10	TMDS clock+	16	SDA
5	TMDS data 1 shield	11	TMDS clock shield	17	DDC/CEC ground
6	TMDS data 1-	12	TMDS clock-	18	+5 V power
				19	Hot plug detect

*Not supported

4. **Connect an HDMI output device** to the output connector (③).

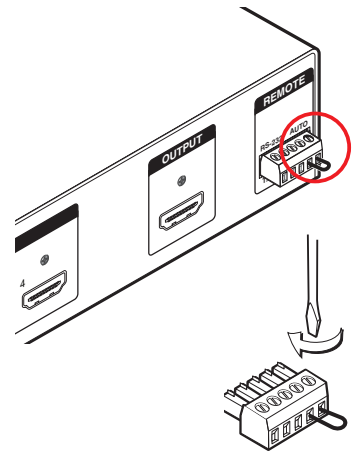
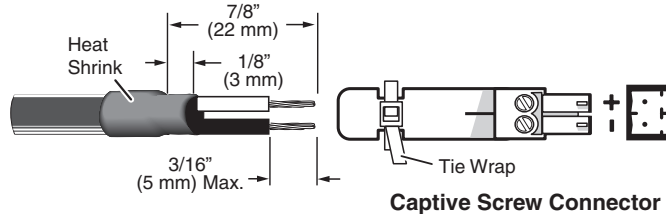
5. **Connect control devices:** Connect your computer to one of the following SW HDMI communication ports to configure and control the switcher via SIS commands or the Universal Switcher Control Program:

- **RS-232 port** — Connect the unterminated transmit, receive, and ground wires of the RS-232 cable to the first three pins on the provided 5-pole captive screw plug, as shown in the illustration at right. Connect the plug to the rear panel Remote shared connector (④ on the rear panel diagram on the previous page), and the other end of the cable to your computer serial port. Protocol for the RS-232 port is 9600 baud, 8 data bits, 1 stop bit, no parity.
- **Config port** — USB mini-B connector (⑥ on the front panel diagram, below) for USB control.



6. (Optional) **Enable auto-input switching.** Use a jumper wire to connect pins 4 and 5 of the shared 5-pole captive screw plug. Attach the plug to the Remote connector (④ on the rear panel diagram) if this was not done in step 5 for the RS-232 connection (see the illustrations at right).

7. If necessary, wire a 2-pole captive screw connector (provided) to your Extron power supply as shown below.

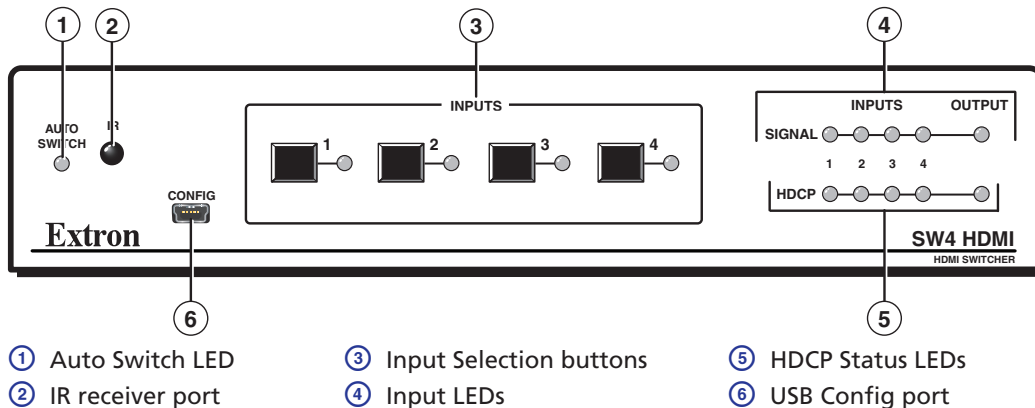


CAUTIONS:

- The power supply must not be permanently fixed to the building structure or similar structures.
- The power supply must not be located within environmental air handling spaces or the wall cavity.

8. Power on the output display.
9. Connect power to the switcher.
10. Power on the source devices.

Front Panel Features



Extron Headquarters +1.800.633.9876 (Inside USA/Canada Only) Extron USA - West Extron USA - East +1.714.491.1500 +1.919.863.1794 +1.714.491.1517 FAX +1.919.863.1797 FAX	Extron Europe +800.3987.6673 (Inside Europe Only) +31.33.453.4040 +31.33.453.4050 FAX	Extron Asia +800.7339.8766 (Inside Asia Only) +65.6383.4400 +65.6383.4664 FAX	Extron Japan +81.3.3511.7655 +81.3.3511.7656 FAX	Extron China +4000.398766 Inside China Only +86.21.3760.1568 +86.21.3760.1566 FAX	Extron Middle East +971.4.2991800 +971.4.2991880 FAX	Extron Korea +82.2.3444.1571 +82.2.3444.1575 FAX	Extron India 1800.3070.3777 Inside India Only +91-80-3055.3777 +91 80 3055 3737 FAX
--	--	--	---	--	---	---	--