

RJ-45 (110 Block)

The wiring instructions below apply to the RJ-45 (110 Block), the RJ-45 (CAT 5 Leviton), and the RJ-11 (110 Block).

To wire these components, do the following:

1. Remove the jacket from the cable.
2. Check jack termination and label for wiring standards and color codes.
3. Route the wires for termination as shown below or on the body of the component.
4. Using a 110-style punchdown tool, seat the wires into the IDC slots. Trim the excess wire flush with the jack body.

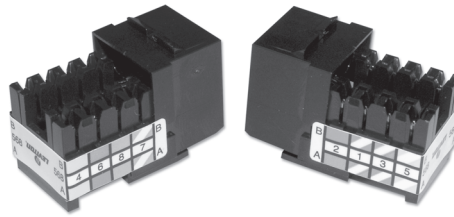
NOTE The 110-style punchdown tool is used with the 110 Block components only.

5. Place the cap over the termination wires for secure connection and added strain relief.
6. Insert jack assembly into the platform or wall plate. Note the UP position of the jack.

T568A			
White/Orange	3	5	White/Blue
Orange	6	4	Blue
White/Brown	7	1	White/Green
Brown	8	2	Green
T568B			
White/Green	3	5	White/Blue
Green	6	4	Blue
White/Brown	7	1	White/Orange
Brown	8	2	Orange

RJ-45 (CAT 5 Leviton)

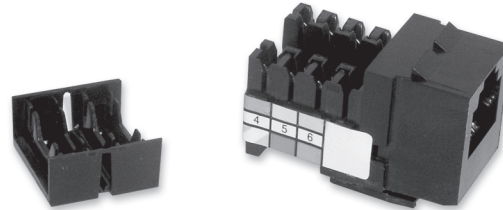
Component body provides color and pin number information.



T568A			
Green	2	7	White/Brown
White/Green	1	8	Brown
White/Orange	3	6	Orange
White/Blue	5	4	Blue

T568B			
Orange	2	7	White/Brown
White/Orange	1	8	Brown
White/Green	3	6	Green
White/Blue	5	4	Blue

RJ-11 (110 Block)

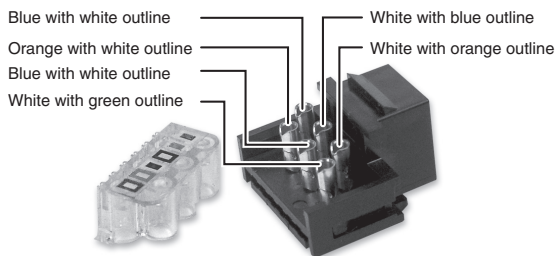


T568A			
Green/White	1	6	Green
Orange/White	2	5	Orange
Blue	3	4	Blue/White
T568B			
White	7	2	Blue
Black	8	1	Yellow
Red	5	3	Green

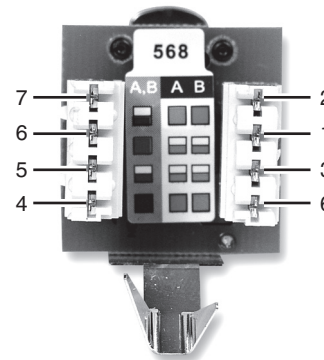
RJ-11 (Terminal Post)

To wire and install a RJ-11 or similar component, do the following:

1. Remove the stuffer cap from the component.
2. Wire the barrel terminals to match the stuffer cap pin outs as shown below.
3. Place the stuffer cap back onto the component.



RJ-45 (EtherCon)



To wire a RJ-45 or similar component, do the following:

1. Strip the cable no more than 40 mm including 10 mm for shielding.

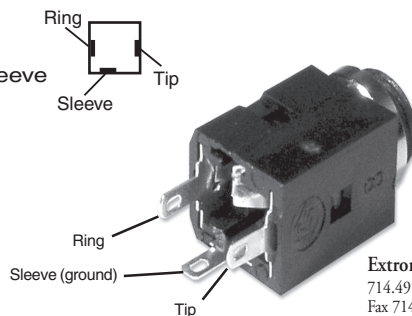
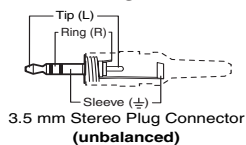
NOTE Ensure that the untwisting of pairs does not exceed 13 mm.

2. Terminate the wires with the proper punch-down tool.
3. Connect the wires as shown below. Please note the color distinctions between TIA 568A and TIA 568B.

T568A			
White/Brown	7	2	Green
Brown	8	1	White/Green
White/Blue	5	3	White/Orange
Blue	4	6	Orange
T568B			
White/Brown	7	2	Orange
Brown	8	1	White/Orange
White/Blue	5	3	White/Green
Blue	4	6	Green

3.5mm Stereo Mini Jack (Solder)

Wiring 3.5 mm Tip-Ring-Sleeve Mini Stereo Plug



68-1055-01
Rev. A
12 04