

TLS 300M

3.5" DESK SCHEDULING TOUCHPANEL



Desk Scheduling at your fingertips! Reserve your spot in an individual workspace, co-working environment, or even at a collaboration table with the TLS 300M 3.5" touchpanel. Red/green LEDs offer at-a-glance space availability from a hallway. Find and book your space with a simple tap. Right out of the box, the TLS 300M panels are ready to be customized with easy-to-use Room Agent™ Software.

- ▶ Locate and reserve a flexible workspace at a glance
- ▶ Reservations via the touchpanel, computer, or mobile device synchronize with the calendar
- ▶ Personalize your branding with two color themes, logo, custom background image, and opacity
- ▶ Easy to tap Function Buttons to check in, release, and extend a reserved space
- ▶ View the complete day's reservations and availability
- ▶ Generate space usage analytics for activity patterns and occupancy trends
- ▶ No recurring costs or maintenance fees

DESCRIPTION

The Extron **TLS 300M** is a 3.5" portrait Desk Scheduling Touchpanel that can be placed on a flat surface to provide at-a-glance space availability with a red/green LED. Its intuitive interface and seamless integration with popular calendar services offer instant visibility into available or booked spaces. Used in conjunction with the TLSI 201 Interactive Wayfinding Interface, users can view real-time space availability, status, and location information using a centralized display.

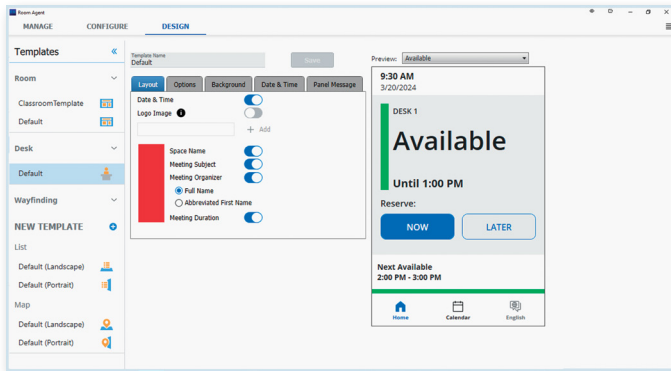
Setup for the TLS 300M is quick and easy using free Extron Room Agent software, with no programming skills required. User interface customization options include light and dark themes, logo, background theme, time/date format, and overlay transparency. The TLS 300M is an effortless way to find and reserve an individual workspace, library space, collaboration table, or private room like a recording studio within flexible workspace environments and educational institutions.

KEY FEATURES

- ▶ **Locate and reserve a desk or flexible workspace at a glance** – The multi-color LED touchpanel status helps users to quickly find and book an available space to meet modern work styles. Institutions will benefit from overall workspace productivity and user experience.
 - ▶ **Make on-demand reservations from the touchpanel, computer, or mobile device that connects to Microsoft® Exchange, 365™, Google Calendar™, 25Live®, EMS, NFS, and Ad Astra®** – Establishes a direct communication link with supported calendar servers for convenient scheduling and streamlined communication, reducing potential points of failure and delays.
 - ▶ **Easy to tap Function Buttons to check in, release, and extend a reserved space**
 - Check-In Button confirms attendance for the reserved space – Retains the reserved status of the space, even if the start of the meeting is delayed.
 - Release Button allows swift cancellation of a reserved space – With the tap of a button, cancel or relinquish a booked space if no longer needed.
 - Extend Button allows for quick time extension of a reserved space – From the touchpanel, tap and extend the time instantly, if the space is available.
 - ▶ **Two color themes, logo, custom background images, and transparency controls provide personalized branding options** – Customizable layouts using the free Room Agent software feature a preview of color themes, custom background image, logo, and opacity.
 - ▶ **View the complete day's reservations and availability** – Allows for planning efficiency and usability.
 - ▶ **Works with Extron Room Scheduling products** – Compatible with TLS TouchLink Scheduling Panels, and the TLSI 201 Interactive Wayfinding Interface. Used in conjunction with the TLSI 201, users can view real-time space availability, status, and location information using a centralized display.
- ## KEY FEATURES (Cont.)
- ▶ **No recurring costs or maintenance fees** – Reduces administrative and operational costs, and enables predictable expenditure.
 - ▶ **3.5" capacitive portrait touchscreen with 320x480 resolution** – Vibrant edge-to-edge glass display with a responsive touchscreen surface delivers a superior user experience.
 - ▶ **Gorilla Glass® screen is tough, scratch, and smudge-resistant** – Stronger and more scratch-resistant than standard glass, while maintaining touch sensitivity, color saturation, and brightness.
 - ▶ **Real-time calendar updates and synchronization** – Ensures accurate and up-to-date information for efficient use of shared spaces, preventing scheduling conflicts.
 - ▶ **Customizable touchpanel settings for ad hoc meeting management** – Ability to add Admin level reservation control.
 - ▶ **PoE compatible** – PoE allows the TLS panel to receive power and communication over a single Ethernet cable.
 - ▶ **Easily deploy and make updates to one or more touchpanels** – Using Room Agent software, copy and modify the settings to add additional touchpanels, update a single touchpanel, or make bulk updates.
 - ▶ **Generate space usage data into trends and activity** – Each touchpanel includes a downloadable Scheduling Activity file that enables you to generate analytics on usage, activity patterns, and trends using data from across the enterprise.
 - ▶ **All communication between the touchpanel and calendar server is encrypted and secure** – Reduce the risk of data breaches and unauthorized access with protection of sensitive scheduling information.
 - ▶ **Support for 802.1X certification on TLS panels, which can be managed via Extron's Toolbelt software** – Enhances security by requiring that all devices be approved before network access is granted.
 - ▶ **Supports a variety of languages** – For a complete list of supported languages, refer to the Room Agent product page.
 - ▶ **Customizable date and time formats with a preview showing how the user interface will look on the touchpanel**
 - ▶ **Configurable space booking in 15-minute intervals** – Allows one to select the start and end times for the availability of a space.
 - ▶ **Light sensor automatically adjusts screen brightness based on ambient light conditions** – Improves the user experience with better readability in varying light conditions, reducing eye strain, extending display lifespan, and conserving energy.
 - ▶ **Red/green status light** – Quick visual status of space availability from a distance.
 - ▶ **Adjustable motion detector** – Senses user presence and triggers relevant actions to activate and deactivate the panel based on user presence.

ROOM AGENT SOFTWARE

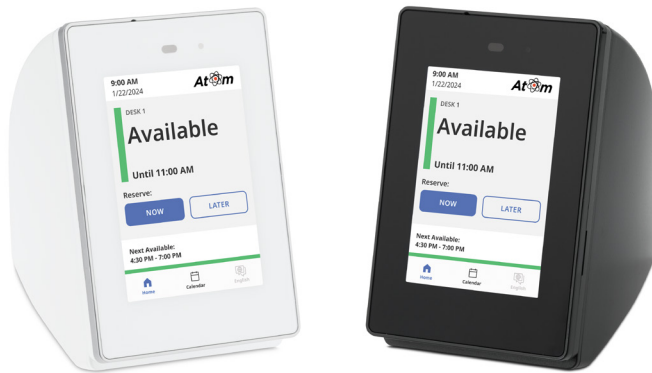
TouchLink Scheduling panels are configured with Extron Room Agent software. Simply connect the touchpanel to your computer, open the free Room Agent software, fill in the required fields to compose the user interface, and you're done. Templates allow you to customize panel appearances. Two color themes, logo placement, custom background images, and transparency controls provide personalized branding options.



Room Agent Software – Design Tab for Desk Scheduling

MOUNTING ACCESSORY

The SMB 111T Surface Mount Box has a contoured design suitable for placing on a tabletop for easy access to the Desk Scheduling touchpanel. An optional SMB Table Clamp Kit secures the SMB 111T box to the table edge without marring the surface.

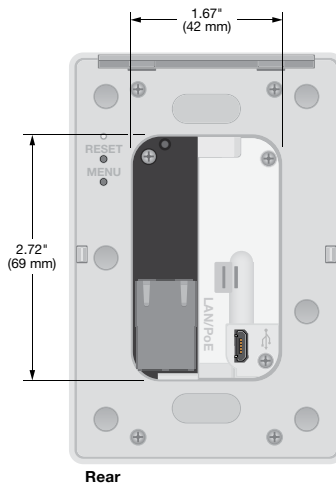
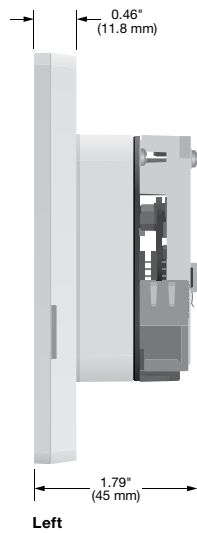
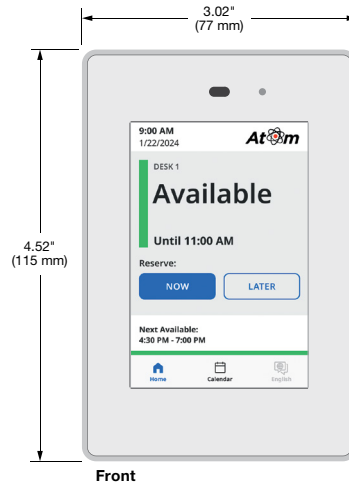


TLS 300M mounted in SMB 111T Surface Mount Box

SPECIFICATIONS

DISPLAY		
Screen type	TFT Active matrix color LCD	
Size	3.5" (89 mm), measured diagonally	
Resolution	320x480 (HVGA)	
Aspect ratio	2:3	
Color depth	18 bit, 262k colors	
Contrast	500:1	
STORAGE		
RAM	1 GB	
Storage	8 GB	
ETHERNET		
Data rate	10/100Base-T, half/full duplex with autotdetect	
Protocols	DHCP, DNS, HTTP, HTTPS, ICMP, IEEE 802.1X, SFTP, SSH, TCP/IP, UDP/IP	
SOFTWARE		
Configuration software	Room Agent	
Resource management software	GlobalViewer Enterprise	
Utilities	Toolbelt, Embedded Web Page	
USB		
Quantity/type	1 high-speed USB 2.0	
Connectors	1 USB micro-B receptacle	
Standards	USB 2.0, USB 1.1, USB 1.0 compatible	
Max. data rates	Low speed (1.5 Mbps), full speed (12 Mbps), high speed (480 Mbps)	
AUDIO OUTPUT		
Playback format(s)	WAV (Microsoft RIFF)	
Container format	LPCM (uncompressed)	
Encoding	LPCM (uncompressed)	
Audio channels	Mono or stereo	
GENERAL		
Power input requirements	Power over Ethernet (PoE 802.3af, class 2)	
Auxiliary power output	USB	
	5 VDC, 275 mA	
Mounting	Furniture or wall mount	
	Yes, in a standard US 1-gang electrical junction box or mud ring	
Enclosure dimensions	4.52" H x 3.02" W x 1.70" D (115 mm H x 77 mm W x 43 mm D)	
Regulatory compliance	CE, C-Tick, c-UL, FCC Class A, ICES, RoHS, UL, VCCI, WEEE	
Product warranty	3 years parts and labor; touchpanel display and overlay components are covered for 1 year	
Model	Version Description	Part Number
TLS 300M	Black	60-1667-102
TLS 300M	White	60-1667-103
Accessories		
Model	Version Description	Part Number
SMB 111T	Surface Mount Box, Black	70-1321-02
SMB 111T	Surface Mount Box, White	70-1321-03
SMB Table Clamp Kit	Table Clamp Kit, Black	70-1160-12
SMB Table Clamp Kit	Table Clamp Kit, White	70-1160-13

PANEL DRAWINGS



Extron

www.extron.com | Follow us on:  