

NetPA 204 POE

FOUR CHANNEL POE AMPLIFIER WITH DANTE AND DSP
20 WATTS PER CHANNEL



The Extron **NetPA 204 POE** is a Dante-enabled, PoE powered, four channel audio power amplifier that delivers up to 20 watts per channel. It is designed to be mounted above ceiling tiles, out of sight and near the speakers. Receiving audio and power over a single cable, the NetPA 204 POE automatically recognizes connected PoE, PoE+, or PoE++ to deliver the corresponding amount of output power. With its integrated DSP, the NetPA 204 POE includes essential signal processing that offers the ability to meet the requirements of complex, decentralized systems while Dante Domain Manager and AES67 support ensures wide compatibility with enterprise configurations and other network audio devices. The NetPA 204 POE is housed in a half rack, 1U, plenum rated enclosure that is fanless for silent operation.

- ▶ Up to 20 watts rms output power per channel
- ▶ Integrated DSP with 4x4 mix matrix
- ▶ PoE operation with scalable output power
- ▶ Dante Domain Manager and AES67 support ensure wide compatibility with enterprise configurations and other network audio devices
- ▶ Network monitoring and control
- ▶ UL 2043 plenum rated enclosure

DESCRIPTION

Dante Audio Networking

Dante provides scalable audio transport, with Dante Domain Manager support, over a local area network using standard Internet protocols. The family of Dante-enabled products from Extron work together as part of a complete networked audio system solution and integrate with other Dante-enabled products to create efficient system designs. With AES67 support, NetPA amplifiers accommodate a range of audio routing needs in a variety of applications.

Setting up a network of Extron Dante-enabled products requires Dante Controller software. Dante Controller is used to easily assign an output from a Dante-enabled device, such as an Extron DMP Plus Series processor, to an input on a NetPA amplifier.

Integrated DSP

A built in 4x4 mix matrix allows any Dante input to be routed to any amplifier output or Dante / amplifier output combo. The integrated DSP features essential processing such as gain adjustment, filters, dynamics, ducking, and delay.

Scalable Power

The NetPA 204 POE automatically scales total output power based on available PoE power and the number of connected speaker channels.

FEATURES

- ▶ **Setup and configuration with Extron DSP Configurator Pro**
- ▶ **Integrated test signal generator** – Used for speaker identification, troubleshooting, and equalization.
- ▶ **DSP Presets** – Using DSP Configurator Pro, all parameters for DSP processing, levels, or audio routing can be saved as presets. Presets can then be recalled via a control system according to system requirements.
- ▶ **Up to 96k operation for superior audio quality and maximum system compatibility** – Digital to analog conversion and internal DSP processing are selectable between 44.1k, 48k, 88.2k, and 96k.
- ▶ **Group Controls** – The NetPA 204 POE provides the capability to consolidate gain or mute parameters throughout the system for external control. Gain controls can be limited in range based on system requirements.
- ▶ **Remotely controllable mute** – Contact closure pin provides remote muting of the NetPA 204 POE outputs.
- ▶ **Supports common Power over Ethernet standards** –
 - PoE 802.3af (15.4 watts)
 - PoE+ 802.3at (30 watts)
 - PoE++ 802.3bt (45 watts)

SPECIFICATIONS

AUDIO SYSTEM		
Frequency response		
Through amplifier		20 Hz to 20 kHz, ±1 dB
THD + Noise		
Through amplifier		0.1% @ 1 kHz at 3 dB below clipping, 8 ohms
S/N		
Digital in to speaker out		100 dB, 20 Hz to 20 kHz at maximum output (unweighted)
Crosstalk		<-90 dB @ 1 kHz, fully loaded
CONTROL/REMOTE		
Control port		
Mute control		Contact closure (1) 3.5mm captive screw connector, 2 pole
USB control port		1 rear panel USB Type-C
Ethernet host port		1 RJ-45 female connector
Program control		Extron DSP Configurator Pro control/configuration program for Windows® Extron Simple Instruction Set (SIS™)
GENERAL		
Power input requirements		IEEE 802.3bt Power Class 5 (PoE++), 802.3at Power Class 4 (PoE+), 802.3af Power Class 3 (PoE)
Power consumption		
PoE++ Power Class 5 (802.3bt)		38.7 W (max.)
PoE+ Power Class 4 (802.3at)		25.5 W (max.)
PoE Power Class 3 (802.3af)		13.9 W (max.)
Ambient temperature/humidity		
Operating		+32° to +122° F (0° to +50° C) / 10% to 90%, non-condensing
Mounting		
Rack mount		Yes, with optional 1U rack shelf
Furniture mount		Yes, with included mounting hardware
Pole mount		Yes, with optional pole mounting kit
Speaker mount		Yes, with optional ATB 100, V-rail mounted speakers only
Enclosure type		Plenum rated, fire-resistant (UL94V-0) metal housing
Enclosure dimensions		1.7" H x 8.7" W x 3.0" D (1U high, half-rack wide) (43 mm H x 221 mm W x 76 mm D)
Product weight		0.9 lbs (0.4 kg)
Product warranty		3 years parts and labor
Model	Version Description	Part number
NetPA 204 POE	Four Ch PoE Dante Amplifier - Up to 20 Watts/Ch	60-2047-01
ATB 100	Amplifier Tile Bridge Ceiling Mount Kit	70-1357-01

SCALABLE POWER

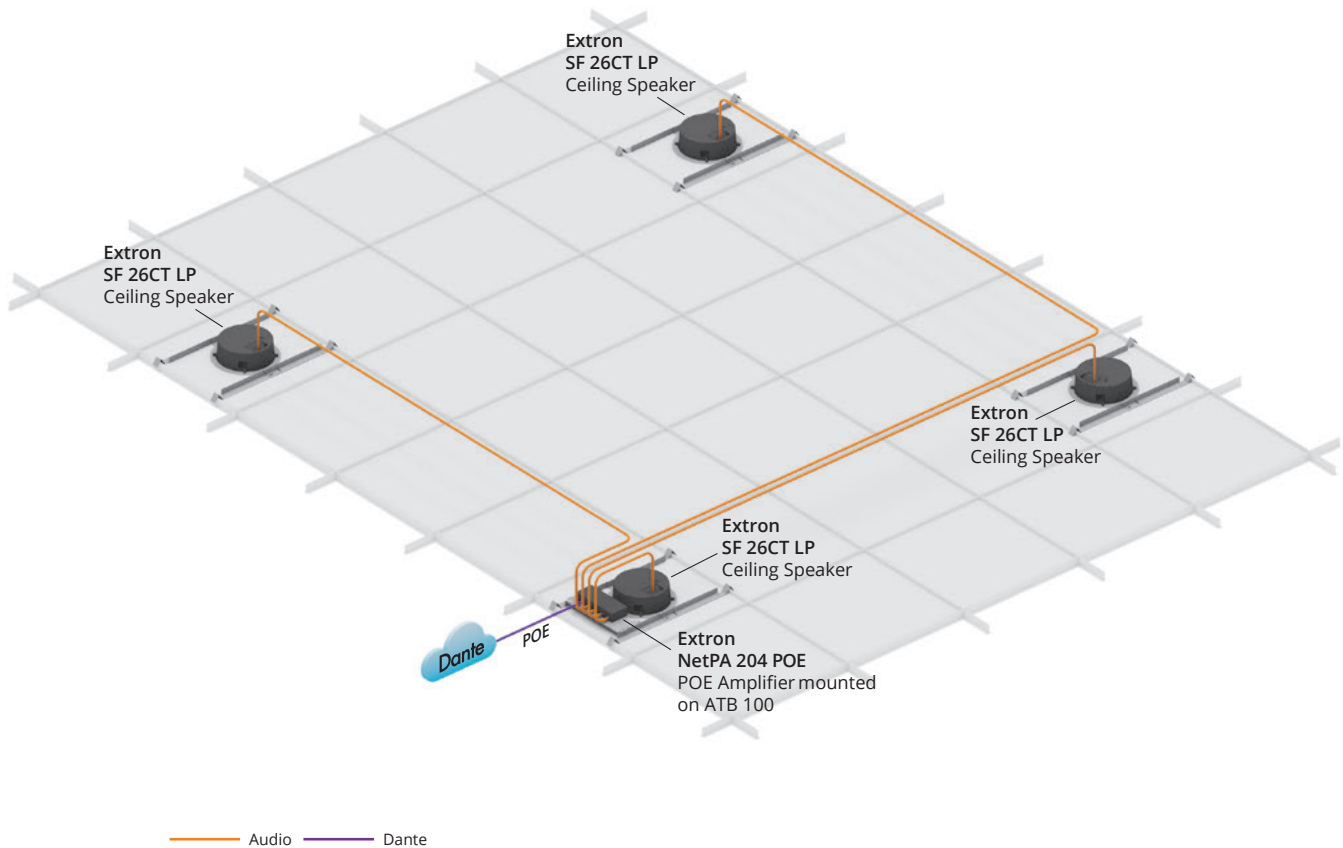
The NetPA 204 POE automatically scales total output power based on available PoE power and the number of connected speaker channels. The table below illustrates the PoE to watts scalability in typical use.

Number of Channels Used	One	Two	Three	Four
PoE Standard	Watts at 8 ohms			
PoE	18	16	16	10
PoE+	20	20	20	18
PoE++	23	23	23	20

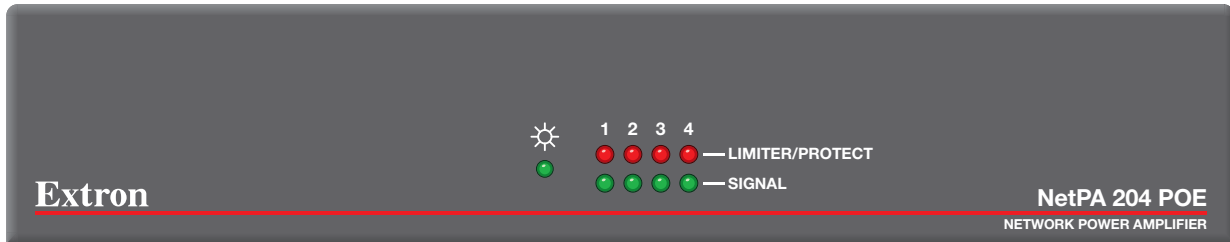
Additional output power specifications are available at www.extron.com/netpa204poe

APPLICATION DIAGRAM

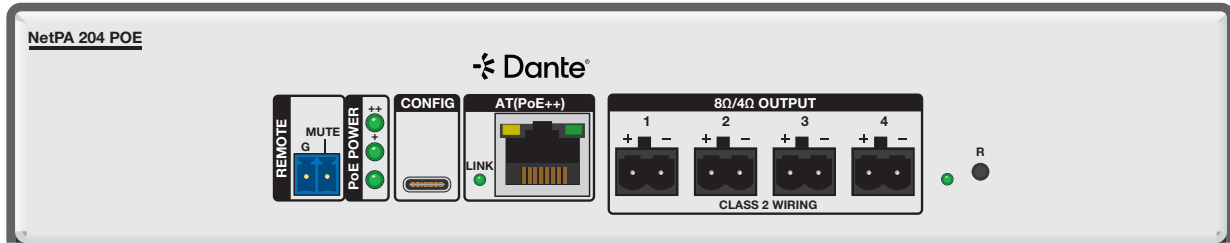
In this amplifier-speaker subsystem, a variety of audio sources are routed via Dante or AES67 to a NetPA 204 POE Network Power Amplifier mounted to the ceiling grid with an ATB 100 tile bridge mount. The audio is processed by the integrated DSP of the NetPA 204 POE according to the requirements of the space where SF 26CT LP Ceiling Speakers provide multiple zones of audio playback. Network audio routing allows for the flexibility to handle the variety of changing room configurations common in modern systems.



PANEL DRAWINGS

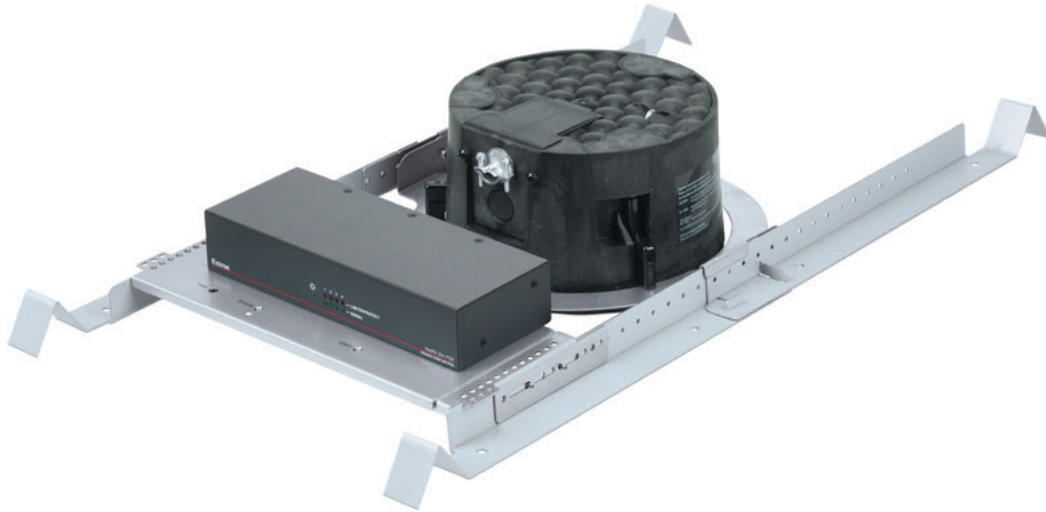


Front



Back

IN-CEILING SPEAKER MOUNT



NetPA 204 POE shown with optional ATB 100 Amplifier Tile Bridge Ceiling Mount
*Speaker and V-Rails not included

Extron

www.extron.com | Follow us on:  