

# Flex55

ELEGANT MOUNTING SYSTEM FOR  
GLOBAL AV CONNECTIVITY,  
CONTROL, AND POWER

Create simple solutions that  
enhance any room

- ▶ Region-independent, global connectivity
- ▶ Stylish design complements any décor
- ▶ Designed to be used on most flat surfaces
- ▶ Offers flexibility with mixing and matching of modules, frames, and enclosures
- ▶ Large selection of Flex55-compatible products create comprehensive solutions for connectivity, power, and control

FLEX55



**Extron Electronics**  
INTERFACING, SWITCHING AND CONTROL

# Flex55 Systems

Extron Flex55 is a stylish and flexible architectural mounting solution for AV connectivity, data, control, and power. Worldwide compatibility and an attractive design help Flex55 systems blend elegantly into a very broad range of AV system environments. Flex55 pass-through modules are compatible with Extron active EU modules for a complete system design, providing an attractive architectural solution for any room.

## **Flex55 offers a variety of modules that provide connectivity for any need:**

### **AV Connectivity**

- Flex55 SuperPlates offer a combination of HDMI, DisplayPort, VGA, Stereo Audio, Network, and USB connectivity. For additional connectivity options, a plate with a Neutrik opening can be combined with any Neutrik connector offered by third parties.
- Two half-size Flex55 modules can be combined into one opening for more flexibility. HDMI, VGA, Stereo Audio, and USB connectivity options are available as well as the Captive Cable Kit with Two Split-Ring Holes to support two AV cables.

### **AC and USB Power**

- Flex55 100 Series Power Modules are available with AC power outlets for the US, Europe, and other major world markets.
- Flex55 USB PowerPlates provide two 5V USB power outlets for charging iOS devices and Android phones and tablets.

### **Control and Active Modules**

- Flex55 control modules are available for audio, MediaLink, and eBUS systems.
- Flex55 active modules facilitate transmission of high quality HDMI signals over shielded CATx cable.

**Flex55 systems are easily configured to create connectivity solutions that enhance any room.**



## **Flex55 solutions are as simple as 1, 2, 3:**

- 1** Start by selecting AV, data, control, and power modules to meet your application requirements. Extron's large selection of Flex55-compatible products makes it easy to find the perfect solution.
- 2** Select your mounting kit. Flex55 100 Mounting kits are available in one- to four-gang sizes. MK 100 Mounting kits for UK, Singapore and Middle East regions, are available in one- to three-gang sizes. Each opening holds one Flex55 or active EU module.
- 3** Select a Flex55 enclosure or junction box for mounting your Flex55 system; or decide to mount it directly into a flat surface such as a table, lectern or podium.

# Flexible Mounting Solutions

## Wall Mounted Solutions

Flex55 Mounting Kits offer a nearly flush in-wall mounting solution for Flex55 AV connectivity and control modules. In environments where walls cannot be cut, a Flex55 Mounting Kit can be used in conjunction with an EWB 212 external wall box to externally mount Flex55 AV connectivity and control modules onto a wall surface. The EWB 212 includes four knockouts to take in cable runs and has sufficient space to house faceplate wiring.



## Table Mounted Solutions

SMB 210 Series surface mount boxes are an elegant and practical way to provide Flex55 connectivity and power to tables and other flat surfaces. Ideal for non-permanent applications where table surfaces cannot be cut. SMB 210 boxes provide a stylish, externally-mounted two- to four-gang solution for applications such as hotel banquet rooms or for use with leased furniture.

The optional Table Clamp Kit is a quick and simple way to securely attach a SMB 210 box to a table edge without damaging its surface.



## Cable Cubby Solutions

Cable Cubby Series/2 cable access enclosures are an ideal solution for convenient access to AV connectivity and power that stays concealed when not in use.

The CCM 155 Cable Cubby mount integrates Flex55 connectivity, control, or Flex55-compatible products into Cable Cubby 1200 and Cable Cubby 1400 enclosures. The CCM 155 also features a connectivity opening for up to two single-space MAAPs or a split-ring cable pass-through plate for up to three AV cables.





# Enclosures

## EWB 212 External Wall Box

### External Wall Box for Flex55 and EU Enclosures

#### Features

- Compatible with Flex55 and EU modules when using Flex55 102 Mounting Kit
- Designed to house faceplate wiring and take in cable runs from a surface-mounted raceway or rear wall space
- Includes four knockouts for external raceway channels
- Available in a durable white finish



Model	Version Description	Part Number
EWB 212	Two-gang, White	70-1131-12

## SMB 210 Series

### Low Profile Surface Mount Boxes for Extron Flex55 and EU Products

#### Features

- Accommodates Flex55 and EU modules
- Compatible with Flex55 100 Mounting Kits
- Stylish, contoured, low profile design complements any environment
- Suitable for tabletop and lectern applications
- Available in a two- to four-gang size
- Optional Table Clamp Kit secures the box without damaging the surface; part #70-1160-1x
- Available in a durable black or white finish



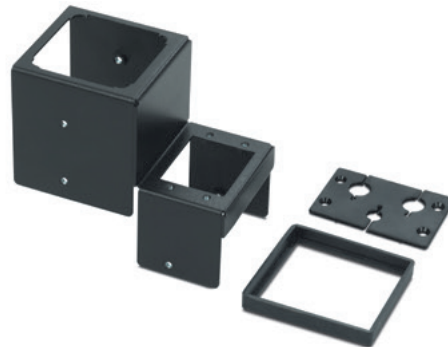
Model	Version Description	Part Number - Black	Part Number - White
SMB 212	Two-gang	70-1142-22	70-1142-23
SMB 213	Three-gang	70-1142-32	70-1142-33
SMB 214	Four-gang	70-1142-42	70-1142-43
SMB Table Clamp Kit	Mounting Hardware for SMB 210 Series	70-1160-12	70-1160-13

## CCM 155

### Cable Cubby Mount for Flex55 Device Modules

#### Features

- Designed to integrate Extron Flex55 connectivity and control modules into Cable Cubby® 1200 or Cable Cubby 1400 Series/2 Cable Access Enclosure
- Convenient, three split-ring hole pass-through plate
- Two-space MAAP opening for cable pass-through or AV connectivity
- Available in black



Model	Version Description	Part Number
CCM 155	Flex55 and EU Mount for Cable Cubby 1200 and 1400	70-1164-01

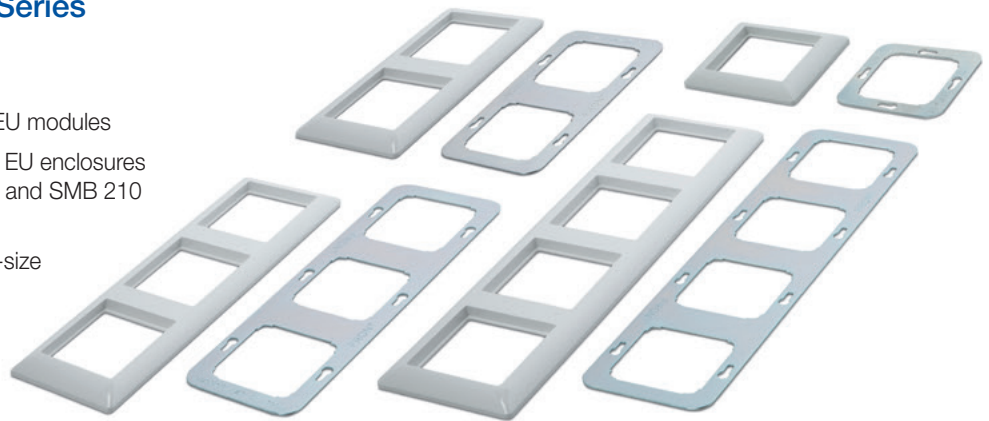


# Mounting Kits

## Flex55 100 Mounting Kit Series Mounting Kits for Flex55

### Features

- Accommodates Extron Flex55 and EU modules
- Designed to mount onto Flex55 and EU enclosures such as EWB 212 External Wall Box and SMB 210 Surface Mount Boxes
- Accommodates two half- or one full-size module per opening
- Available in a one- to four-gang frame
- Mounting hardware included
- Available in black or white



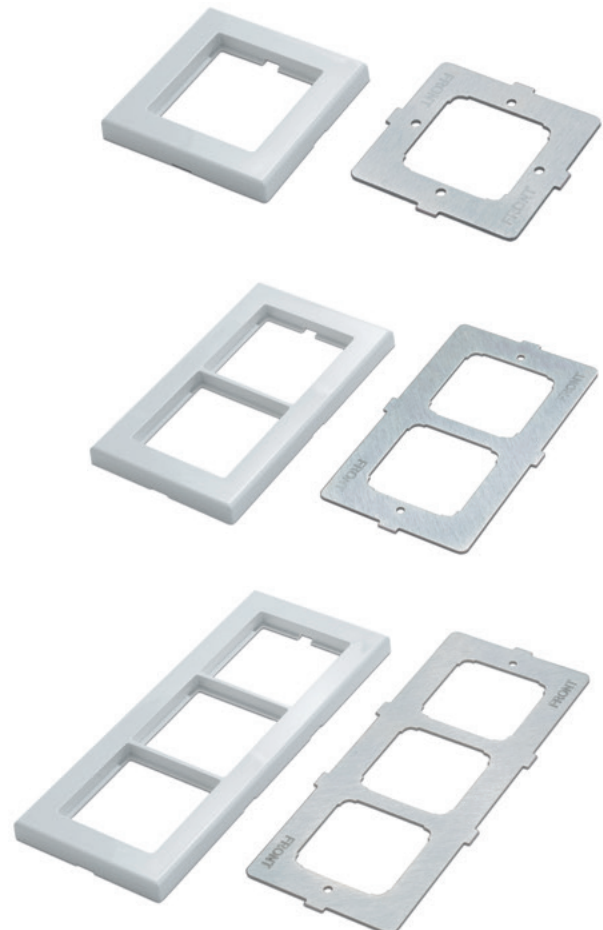
Model	Version Description	Part Number
Flex55 101	1-gang Mounting Kit for Flex55 and EU-Black	70-1155-12
Flex55 101	1-gang Mounting Kit for Flex55 and EU-White	70-1155-13
Flex55 102	2-gang Mounting Kit for Flex55 and EU-Black	70-1155-22
Flex55 102	2-gang Mounting Kit for Flex55 and EU-White	70-1155-23
Flex55 103	3-gang Mounting Kit for Flex55 and EU-Black	70-1155-32
Flex55 103	3-gang Mounting Kit for Flex55 and EU-White	70-1155-33
Flex55 104	4-gang Mounting Kit for Flex55 and EU-Black	70-1155-42
Flex55 104	4-gang Mounting Kit for Flex55 and EU-White	70-1155-43

## MK 100 Mounting Kit Series Mounting Kits for MK Boxes

### Features

- Accommodates Extron MK products
- Designed to mount into MK junction boxes and enclosures for use in the UK, Middle East, Singapore and other regions using MK-type enclosures
- Accommodates one MK module per opening
- Compatible with one-, two-, and three-gang enclosures
- Mounting hardware included
- Available in white

Model	Version Description	Part Number
MK 101	1-gang Mounting Kit for MK Junction Boxes – White	70-897-13
MK 102	2-gang Mounting Kit for MK Junction Boxes – White	70-897-23
MK 103	3-gang Mounting Kit for MK Junction Boxes – White	70-897-33



# Modules

## Flex55 SuperPlate Series

**Flex55 Plates for HDMI, DisplayPort, VGA, Stereo Audio, and USB**

### Features

- Designed to mount into Flex55 frames and enclosures
- Flex55 SuperPlates available with HDMI, DisplayPort, Computer Video, Stereo Audio, and USB on pigtails
- Signals passed through unprocessed
- Supports DDC transmission
- Available in black or white
- EWB 212 and SMB 210 Series enclosures and mounting kits sold separately



Model	Version Description	Part Number - Black	Part Number - White
Flex55 SuperPlate 100	HDMI, VGA, Audio, and USB	70-1143-02	70-1143-03
Flex55 SuperPlate 120	HDMI, DisplayPort, Audio, and VGA	70-1143-22	70-1143-23
Flex55 SuperPlate 140	HDMI, VGA, and Audio	70-1143-42	70-1143-43
Flex55 SuperPlate 150	HDMI and Audio	70-1143-52	70-1143-53

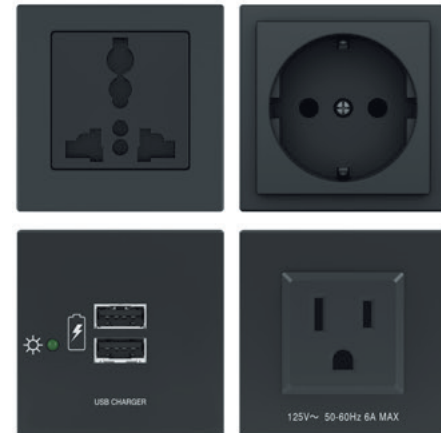
## Flex55 100 Series Power Modules

**AC and USB Power Modules for Flex55 and EU Junction Boxes**

### Features

- AC power modules available with US, Europe, and Multi-Region outlets
- USB power modules provide power for charging iOS and Android phones or tablets
- Multi-Region AC outlet is compatible with a variety of AC plug types
- Flex55 AC 101 US power module is UL/c-UL listed
- All Flex55 100 Series Power Modules are CE compliant
- Highly reliable, energy-efficient external universal power supply included, replacement part #70-775-01

Model	Version Description	Part Number - Black	Part Number - White
Flex55 AC 101 US	(1) US Outlet	60-1692-02	
Flex55 AC 101 Multi-Region	(1) Multi-Region Outlet	60-1692-12	60-1692-13
Flex55 AC 101 EU	(1) Central Europe Outlet	60-1692-22	60-1692-23
Flex55 USB PowerPlate 102	(2) USB	60-1693-02	60-1693-03



## Blank and Pass-Through Modules

### Features

- Compatible with Flex55 modules when using the Flex55 100 Mounting Kit
- Designed to mount into Flex55 and EU junction boxes and enclosures
- Available in black and white and in full- and half-sizes

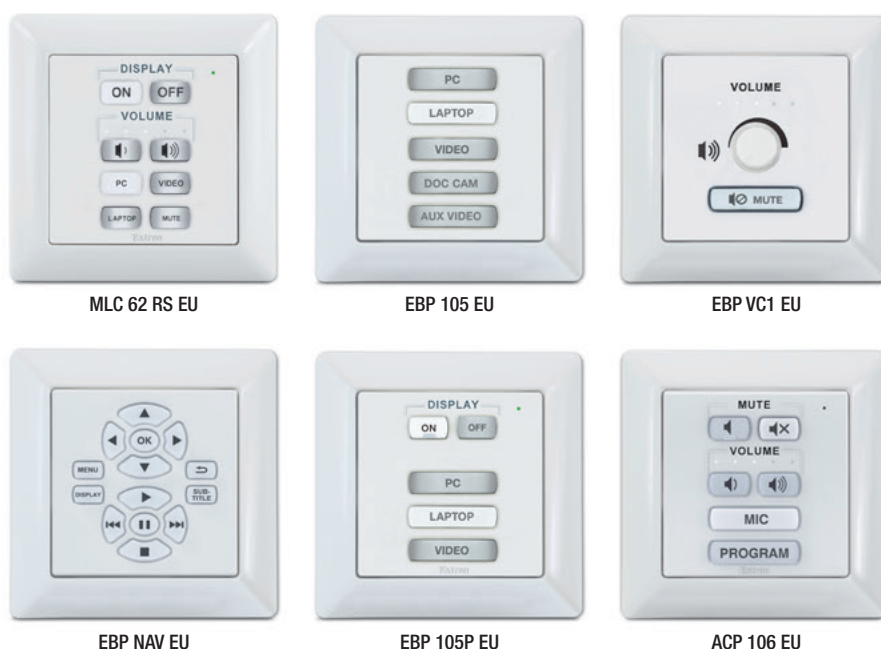
Model	Size	Part Number - Black	Part Number - White
Blank	Full	70-1154-02	70-1154-03
One Neutrik Opening	Full	70-1154-22	70-1154-23
Two RJ-45 Barrels	Full	70-1148-02	70-1148-03
Blank	Half	70-1154-32	70-1154-33
One RJ-45 Barrel Female to Female Barrel - CAT 5e	Half	70-1148-12	70-1148-13
One 15-pin HD Female to Female on Barrel	Half	70-1178-22	70-1178-23
One 3.5 mm Stereo Mini Jack on Captive Screw	Half	70-1179-02	70-1179-03
One HDMI Female to Female on 12.75" Pigtail	Half	70-1178-02	70-1178-03
One USB A Female to Female on 12.30" Pigtail	Half	70-1180-02	70-1180-03
One USB B Female to One USB A on 12.30" Pigtail	Half	70-1180-12	70-1180-13
Captive Cable Kit with Two Split-Ring Holes	Half	70-1181-02	70-1181-03



## AV CONTROL MODULES

Extron offers a range of Flex55-compatible pushbutton controllers to fit a broad variety of device control needs. Our MediaLink controllers are ideal for single-projection classroom or conference room applications and provide familiar and consistent control across multiple rooms or even an entire campus. eBUS button panels are customizable, integration-friendly AV system control interfaces that are linked to an IPCP Pro control processor and each other by a single cable that carries both power and communication signals. There are currently 32 eBUS button panels, each offering unique button configurations and capabilities.

The Extron ACP 106 Series of configurable audio control panels are designed to interface with DMP 128 Plus audio processors. They provide volume adjustments for mixing and zone control, plus preset or macro recall for room configuration. Up to four ACP Series control panels can be installed around a meeting space and linked together.



## TWISTED PAIR SIGNAL TRANSMISSION MODULES

The DTP T EU 4K 231 and DTP T EU 4K 331 are compact transmitters that send HDMI signals up to 330 feet (100 meters) over shielded CATx cable and support video resolutions up to 4K. DTP T EU 4K transmitters fit into Flex55 and EU junction boxes. All transmitters feature a front panel LED indicating power and signal presence as well as compatibility with HDBaseT-enabled devices. Designed for DTP® Systems, the DTP T EU 4K can be remotely powered by Extron DTP CrossPoint® matrix switchers or other DTP-enabled products. The one-gang design provides maximum space efficiency and the convenience of placing input connections precisely where they are needed.





# Specifications

## FLEX55 SUPERPLATES SERIES

<b>Mounting</b>	Mounts to Flex55 frames and enclosures.
<b>Connector type</b>	HDMI female to female pigtail cable, 12.75" (324 mm) VGA female to female pigtail cable, 9.00" (228 mm) DisplayPort female to female pigtail cable, 13.30" (338 mm) 3.5 mm stereo audio jack to captive screw pigtail cable, 10.25" (260 mm) USB A female to female pigtail cable, 12.30" (312 mm)
<b>Resolution range</b>	HDMI cable: Up to 4K @ 60 Hz (4096x2160) or UHD @ 60 Hz (3840x2160) 8 bit color depth, max. 18.0 Gbps data rate
<b>Faceplate dimensions</b>	2.17" H x 2.17" W x 0.29" D (55.0 mm H x 55.0 mm W x 7.3 mm D) Allow 1.85" (47 mm) depth for cable management.
<b>Material</b>	High-impact plastic blend

## FLEX55 100 SERIES POWER MODULES

<b>Mounting</b>	Mounts to Flex55 frames and enclosures.
<b>USB power rating</b>	Output: 5 VDC, 2.1 A, 10.5 watts total
<b>AC Power rating</b>	
EU and Multi-Region modules	Pass-through: 220-240 VAC, 50-60 Hz, 6 A MAX
<b>Faceplate dimensions</b>	2.17" H x 2.17" W x 0.29" D (55.0 mm H x 55.0 mm W x 7.3 mm D) Allow 1.85" (47 mm) depth for cable management. Cable length (EU and Multi-Region modules): 11.50" (292.0 mm)
<b>Power supply (USB)</b>	External Input: 100-240 VAC, 50-60 Hz Output: 12 VDC, 1 A
<b>Power consumption (USB)</b>	
Device	10.8 watts
Device and power supply	13.2 watts
<b>Thermal dissipation (USB)</b>	
Device	2.7 BTU/hr
Device and power supply	10.7 BTU/hr
<b>Material</b>	High-impact plastic blend

## FLEX55 100 MOUNTING KIT SERIES

<b>Mounting</b>	Mounts to Extron Flex55 enclosures and EU junction boxes. Accommodates Extron Flex55 modules and active EU modules.
<b>Materials</b>	Metal mounting bracket, high-impact plastic frame.
<b>Dimensions - Frame</b>	
Flex55 101	3.2" H x 3.2" W x 0.4" D (1 gang) (80.5 mm H x 80.5 mm W x 10.1 mm D)
Flex55 102	3.2" H x 6.0" W x 0.4" D (1 gang) (80.5 mm H x 151.5 mm W x 10.1 mm D)
Flex55 103	3.2" H x 8.8" W x 0.4" D (1 gang) (80.5 mm H x 222.5 mm W x 10.1 mm D)
Flex55 104	3.2" H x 11.6" W x 0.4" D (1 gang) (80.5 mm H x 293.5 mm W x 10.1 mm D)

## SMB 210 SERIES ENCLOSURES

<b>Mounting</b>	Surface mountable. Compatible with Extron Flex55 mounting kits and EU devices.
<b>Enclosure type</b>	Metal body, high-impact plastic end caps
<b>Enclosure dimensions</b>	
SMB 212	5.99" W x 3.20" H x 3.22" D (2 gang) (152.2 mm W x 81.3 mm H x 81.8 mm D)
SMB 213	8.78" W x 3.20" H x 3.22" D (3 gang) (223.0 mm W x 81.3 mm H x 81.8 mm D)
SMB 214	11.58" W x 3.20" H x 3.22" D (4 gang) (294.1 mm W x 81.3 mm H x 81.8 mm D)
Front angle	30° from vertical
<b>Cable openings</b>	
SMB 212	1x 1.00" x 1.75" (25 mm x 44 mm)
SMB 213	2x 1.00" x 1.75" (25 mm x 44 mm)
SMB 214	3x 1.00" x 1.75" (25 mm x 44 mm)
All models	Rear slotted opening: 0.46" H (11.7 mm H) running the width of each enclosure

## EWB 212 ENCLOSURE

<b>Mounting</b>	Wall mount. Compatible with Extron Flex55 mounting kits and EU devices.
<b>Raceway openings</b>	1 on each side
<b>Material</b>	High-impact plastic blend
<b>Enclosure dimensions</b>	
EWB 212	3.35" H x 6.14" W x 1.97" D (85 mm H x 156 mm W x 50 mm D)
<b>Internal depth</b>	
EWB 212	1.85" (47 mm)

## GENERAL

<b>Regulatory compliance</b>	(Flex55 SuperPlates Series, Flex55 100 Series Power Modules, Flex55 100 Mounting Kit Series, SMB 210 Series, and EWB 212 Enclosures)
Safety	CE
Environmental	Complies with the appropriate requirements of RoHS, WEEE.
<b>Warranty</b>	3 years parts and labor

## MK 100 MOUNTING KIT SERIES

<b>GENERAL</b>	
<b>Mounting</b>	Mounts to MK and British standardized junction boxes. Accommodates Extron Flex55 Modules and active MK Modules.
<b>Materials</b>	Metal mounting bracket, high impact plastic frame
<b>Dimensions</b>	
Frame	
MK 101	3.4" H x 3.4" W x 0.4" D (1 gang) (86 mm H x 86 mm W x 10 mm D)
MK 102	3.4" H x 5.8" W x 0.4" D (2 gang) (86 mm H x 147 mm W x 10 mm D)
MK 103	3.4" H x 8.2" W x 0.4" D (3 gang) (86 mm H x 207 mm W x 10 mm D)
<b>Regulatory compliance</b>	
Safety	CE
Environmental	Complies with the appropriate requirements of RoHS, WEEE.

For complete specifications, please go to [www.extron.com](http://www.extron.com)  
Specifications are subject to change without notice.

## WORLDWIDE SALES OFFICES

Anaheim • Raleigh • Silicon Valley • Dallas • New York • Washington, DC • Toronto • Mexico City • Paris • London  
Frankfurt • Madrid • Stockholm • Amersfoort • Moscow • Dubai • Johannesburg • Tel Aviv • Sydney • Melbourne  
Bangalore • Mumbai • New Delhi • Singapore • Seoul • Shanghai • Beijing • Hong Kong • Tokyo

[www.extron.com](http://www.extron.com)