

# CTU 45 II

UNIVERSAL RJ-45 TERMINATION TOOL  
AND DIE FOR 22 AWG CABLES



The Extron CTU 45 II is a crimp tool for terminating Extron XTP DTP 22 plenum and non-plenum digital twisted pair and other standard large diameter networking cables. Designed by AV professionals, for AV professionals, the CTU 45 II provides accurate, consistent crimp connections every time.

- ▶ Designed for use with Extron XTP DTP 22 plenum and non-plenum shielded twisted pair cables and XTP DTP 22 RJ-45 Plugs
- ▶ Compatible with solid or stranded 22 AWG cables
- ▶ Suitable with other modular, shielded or unshielded RJ-45 plug types
- ▶ Compatible with keyed and non-keyed modular plugs
- ▶ One-step operation simultaneously crimps the plug contact pins with the metal strain relief and grounding shield
- ▶ Color-coded wiring diagram label allows the user to quickly identify the correct wiring scheme

## DESCRIPTION

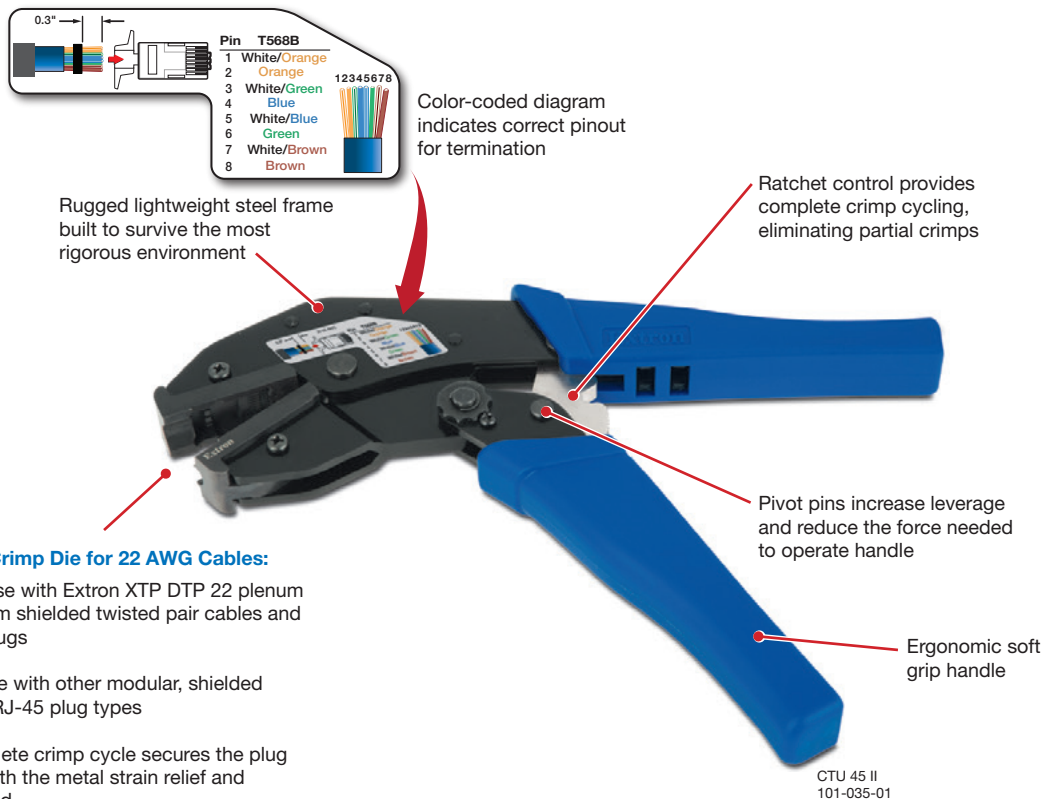
The Extron **CTU 45 II** is a crimp tool and die for terminating Extron XTP DTP 22 shielded twisted pair cables with Extron XTP DTP 22 RJ-45 Plugs. The Extron-engineered, precision-machined crimp die provides accurate and consistent crimp connections. In a single cycle, the tool simultaneously crimps the plug contact pins with the metal strain relief and grounding shield. The rugged, light-weight ratchet-controlled frame requires minimal effort using one hand to complete the crimp cycle. The user-replaceable die also fits other modular, shielded or unshielded, RJ-45 plug types. The CTU 45 II is ideal for terminating Extron XTP DTP 22 shielded twisted pair and other standard 22 AWG networking cables.

Model	Version Description	Part number
CTU 45 II	RJ-45 Crimp Tool and Die - 22 AWG	101-035-01
CTU RJ-45 II Die	RJ-45 Replacement Die for CTU 45 II	101-036-01

## FEATURES

- ▶ Designed for use with Extron XTP DTP 22 plenum and non-plenum shielded twisted pair cables and XTP DTP 22 RJ-45 Plugs
- ▶ Compatible with solid or stranded 22 AWG cables
- ▶ Suitable for use with other modular, shielded or unshielded RJ-45 plug types
- ▶ Compatible with keyed or non-keyed modular plugs
- ▶ One-step operation simultaneously crimps the plug contact pins with the metal strain relief and grounding shield
- ▶ Color-coded wiring diagram label allows the user to quickly identify the correct wiring scheme
- ▶ Rugged, lightweight ratchet-controlled frame – Provides complete crimp cycling, eliminating partial crimps.
- ▶ Extron engineered, precision-machined crimp die – Solid steel crimp die ensures accurate and repeatable RJ-45 crimps.
- ▶ Replacement CTU RJ-45 II Die, part # 101-036-01

## CTU 45 II



### Universal RJ-45 Crimp Die for 22 AWG Cables:

- Designed for use with Extron XTP DTP 22 plenum and non-plenum shielded twisted pair cables and XTP DTP 22 Plugs
- Also compatible with other modular, shielded or unshielded RJ-45 plug types
- A single, complete crimp cycle secures the plug contact pins with the metal strain relief and grounding shield
- Extron engineered, precision-machined crimp die ensures accurate and repeatable RJ-45 crimps

# Extron

[www.extron.com](http://www.extron.com)