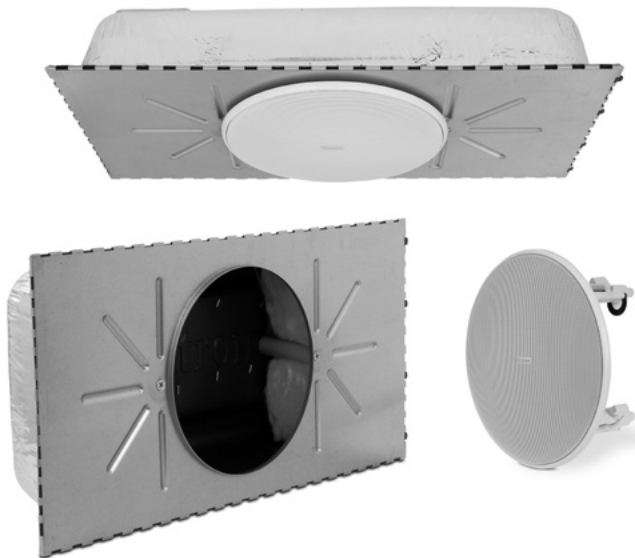


# CS 123T

## FULL-RANGE SPEEDMOUNT CEILING SPEAKER SYSTEM

**SPEED MOUNT**



The Extron CS 123T is a patented, plenum rated, two-piece speaker system designed for division-of-labor installations. This unique system consists of the CS 120P ceiling tile enclosure and the CS 3T speaker cartridge. The CS 123T delivers full-range audio reproduction for applications where high intelligibility is desired. A very wide 165° conical dispersion allows for great flexibility in speaker spacing. The CS 123T is optimized for voice reproduction applications and designed for drop ceiling installations in meeting spaces, multi-purpose rooms, and courtrooms. This unique speaker design greatly simplifies ceiling speaker installation and delivers significant time and cost savings.

- ▶ **Patented two-piece speaker system for suspended ceilings in division-of-labor installations:**
  - CS 120P plenum ceiling tile enclosure, 1' x 2' (30.5 cm x 61 cm), pair
  - CS 3T full-range speaker cartridge, pair
  - Components available separately or together as a CS 123T complete assembly
- ▶ **Enclosure and speaker cartridge can be installed separately by low-voltage and AV system contractors**
- ▶ **Provides significant time and cost savings in ceiling speaker installation**
- ▶ **3" (7.6 cm) full-range driver**
- ▶ **165° conical dispersion provides wide coverage and allows for flexible speaker placement**
- ▶ **8 ohm direct or 70/100 volt operation on a 6 position, behind-the-grille selector**
- ▶ **16 watts continuous pink noise, 32 watts continuous program**



**Extron Electronics**  
INTERFACING, SWITCHING AND CONTROL

## DESCRIPTION

The Extron **CS 123T SpeedMount® Ceiling Speaker System** is a patented low profile, plenum rated two-piece speaker system. It provides an extremely wide 165° conical dispersion for flexibility in speaker spacing. The system is designed for applications where high intelligibility and maximum coverage is desired in voice applications and low ceiling installations. The innovative system consists of the **CS 120P** plenum rated enclosure and a **CS 3T** full-range speaker cartridge. The enclosure installs quickly into 2' x 2' (61 cm x 61 cm) or 600 mm x 600 mm suspended ceilings. The speaker cartridge features a 3" (7.6 cm) full-range driver, and can be used in 70/100 volt or 8 ohm operation. The CS 123T is available as a complete assembly, or the CS 120P and CS 3T can be purchased separately to accommodate division-of-labor installations.

## KEY FEATURES

- ▶ **Patented two-piece speaker system for suspended ceilings in division-of-labor installations:**
  - CS 120P plenum enclosure, 1' x 2' (30.5 cm x 61 cm), pair
  - CS 3T full-range speaker cartridge, pair
  - Components available separately or together in a CS 123T complete assembly
- ▶ **Enclosure and speaker cartridge can be installed separately by low-voltage and AV system contractors**
- ▶ **Provides significant time and cost savings in ceiling speaker installation**
- ▶ **3" (7.6 cm) full-range driver**
- ▶ **165° conical dispersion provides wide coverage and allows for flexible speaker placement**
- ▶ **8 ohm direct or 70/100 volt operation on a 6 position, behind-the-grille selector:**
  - 8 ohm direct
  - 70 volt: 16, 8, 4, 2, and 1 watt selectable
  - 100 volt: 16, 8, 4, and 2 watt selectable
- ▶ **16 watts continuous pink noise, 32 watts continuous program**
- ▶ **Internal driver overload protection**
- ▶ **Thin bezel and magnetically attached grille**
- ▶ **Fast-installing enclosure speeds installation; no tile bridge necessary**
- ▶ **UL 2043 plenum rated enclosure**
- ▶ **Low profile, 5" (12.7 cm) deep enclosure for plenum environments**
- ▶ **Compatible with US 2' x 2' ceiling grids and metric 600 mm x 600 mm ceiling grids**
- ▶ **5 year parts and labor warranty**

## SPECIFICATIONS

GENERAL — CS 123T SYSTEM — CS 120P AND CS 3T		
<b>Regulatory compliance</b>		
Safety	CE, NFPA 70, NFPA 90A UL listed for use in plenum air spaces: Meets UL 2043 for heat and smoke release (only when CS 3T is used with CS 120P). Meets UL 1480 for commercial and professional audio systems.	
Environmental	Complies with the appropriate requirements of RoHS and WEEE.	
Warranty	5 years parts and labor	
GENERAL — CS 120P PLENUM ENCLOSURE		
<b>Enclosure type</b>		
Enclosure design	1' x 2' (30.5 cm x 61 cm) tapered cube	
<b>Enclosure outer dimensions</b>		
23.7" L x 11.7" W x 4.9" D (60.1 cm L x 29.7 cm W x 12.4 cm D)		
<b>Cutout dimensions</b>		
9.2" (23.4 cm) diameter		
AUDIO/ACOUSTIC AND ELECTRICAL — CS 3T SPEAKER CARTRIDGE		
<b>Speaker type</b>		
1-way full range in-ceiling speaker		
<b>Frequency range</b>		
118 Hz to 20 kHz, -10 dB, half space (per IEC 60268-5)		
<b>Power capacity</b>		
16 W (rms) continuous pink noise (per IEC 60268-5) 32 W (rms) continuous program		
<b>Nominal sensitivity</b>		
83 dB SPL, 1 W, 1 m, 8 ohms direct, half space (per IEC 60268-5)		
<b>Nominal impedance</b>		
8 ohms per speaker		
<b>Nominal coverage angle</b>		
165° conical coverage (1 kHz to 4 kHz, weighted 2 kHz - 4 kHz)		
<b>Rotary switch taps</b>		
70 V input	16 W, 8 W, 4 W, 2 W, 1 W, 8 ohms direct	
100 V input	16 W, 8 W, 4 W, 2 W, 8 ohms direct	
<b>Driver</b>		
(1) 3" (76.2 mm) paper cone		
<b>Overload protection</b>		
Full range power limiter		
<b>Input/output connectors</b>		
(1) 5 mm captive screw connector, 4 pole with loop out		
<b>Mounting</b>		
Ceiling mountable with CS 120P enclosure		
<b>Enclosure type</b>		
Enclosure materials	High-impact, fire-resistant (UL94V-0) plastic	
Enclosure design	Plastic, open back, infinite baffle	
<b>Grille material</b>		
Steel		
<b>Enclosure outer dimensions</b>		
3.0" H x 10.3" diameter (7.6 cm H x 26.2 cm diameter) Height is from front (bottom) of ceiling tile to top of withdrawn locking arms.		
<b>Cutout dimensions</b>		
9.2" diameter (23.4 cm diameter)		
Model	Version Description	Part number
CS 123T	Full-Range SpeedMount Speaker System, Pair	42-242-03
CS 120P	SpeedMount Enclosure, Pair	70-976-01
CS 3T	Full-Range, Open Back Speaker, Transformer, Pair	60-1463-03

For complete specifications, please go to [www.extron.com](http://www.extron.com)  
Specifications are subject to change without notice.

### WORLDWIDE SALES OFFICES

Anaheim • Raleigh • Silicon Valley • Dallas • New York • Washington, DC • Toronto • Mexico City • Paris • London  
Frankfurt • Madrid • Stockholm • Amersfoort • Moscow • Dubai • Johannesburg • Tel Aviv • Sydney • Melbourne  
Bangalore • Mumbai • New Delhi • Singapore • Seoul • Shanghai • Beijing • Hong Kong • Tokyo

[www.extron.com](http://www.extron.com)