

CCI Pro 700

TOUCHLINK PRO
CONFERENCE ROOM
CONTROL INTERFACE

Take Control in Your Next Meeting

- ▶ Industry's first control interface to combine conferencing, collaboration, and AV system control
- ▶ Fully customizable buttons and configurable control functions add versatility to any meeting space
- ▶ Works seamlessly with virtually any audio and video conferencing solution
- ▶ Streamline configuration with free, professionally-designed system templates



Extron Electronics
INTERFACING, SWITCHING AND CONTROL

Introduction

The Extron **CCI Pro 700** is the industry's first control interface optimized for conferencing, collaboration, and AV control. It supports many of the critical functions needed in a conferencing environment, while providing a powerful and intuitive user interface for room control. The compact CCI Pro 700 includes a 3.5" color information display, a numeric keypad, and backlit buttons. The information display may be used to show contact information, call directories, and call status. Buttons directly below the display may be used to navigate custom lists and menus. The information display is customized using Extron GUI Designer software. All buttons can be configured and customized using Global Configurator Plus and Pro, and Custom Button Builder. This flexible design affords countless conferencing and control possibilities.

The CCI Pro 700 is at home in any size conferencing environment and works seamlessly with Extron Pro Series control processors, external microphones, speakers, DSP processors, and other conferencing systems in the room to create a comprehensive collaboration environment.

- ▶ Control conference systems and AV devices from a single, easy-to-use interface
- ▶ Familiar and intuitive design
- ▶ Works seamlessly with virtually any audio and video conferencing solution
- ▶ Compatible with all IP Link Pro control processors
- ▶ Customizable 3.5" color display with context-dependent buttons
- ▶ Six backlit, soft-touch function buttons for AV device control or call presets
- ▶ Dual-color call status indicator
- ▶ Configurable buttons for critical conference functions
- ▶ Power over Ethernet allows the interface to receive power and communication over a single Ethernet cable, eliminating the need for a local power supply - PoE injector sold separately
- ▶ Light sensor adjusts screen and button brightness as the ambient room lighting changes
- ▶ Designed for use on a conference table, desk, or any flat surface

Backlit buttons provide easy viewing in low-light environments.



Unlimited Customization Options

The CCI Pro 700 information display can be easily customized using Extron GUI Designer to display text, graphics, and any other information to match application requirements. The four context buttons along the bottom of the screen can be configured to display contact information, dialing directories, call status, and many other system operations.



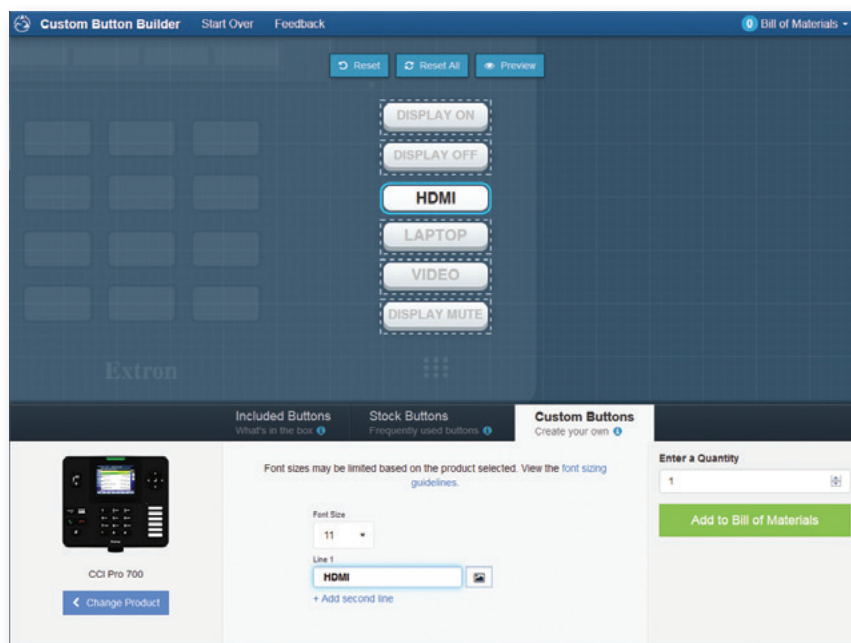
CUSTOM BUTTON BUILDER

Create Buttons with Just a Few Clicks

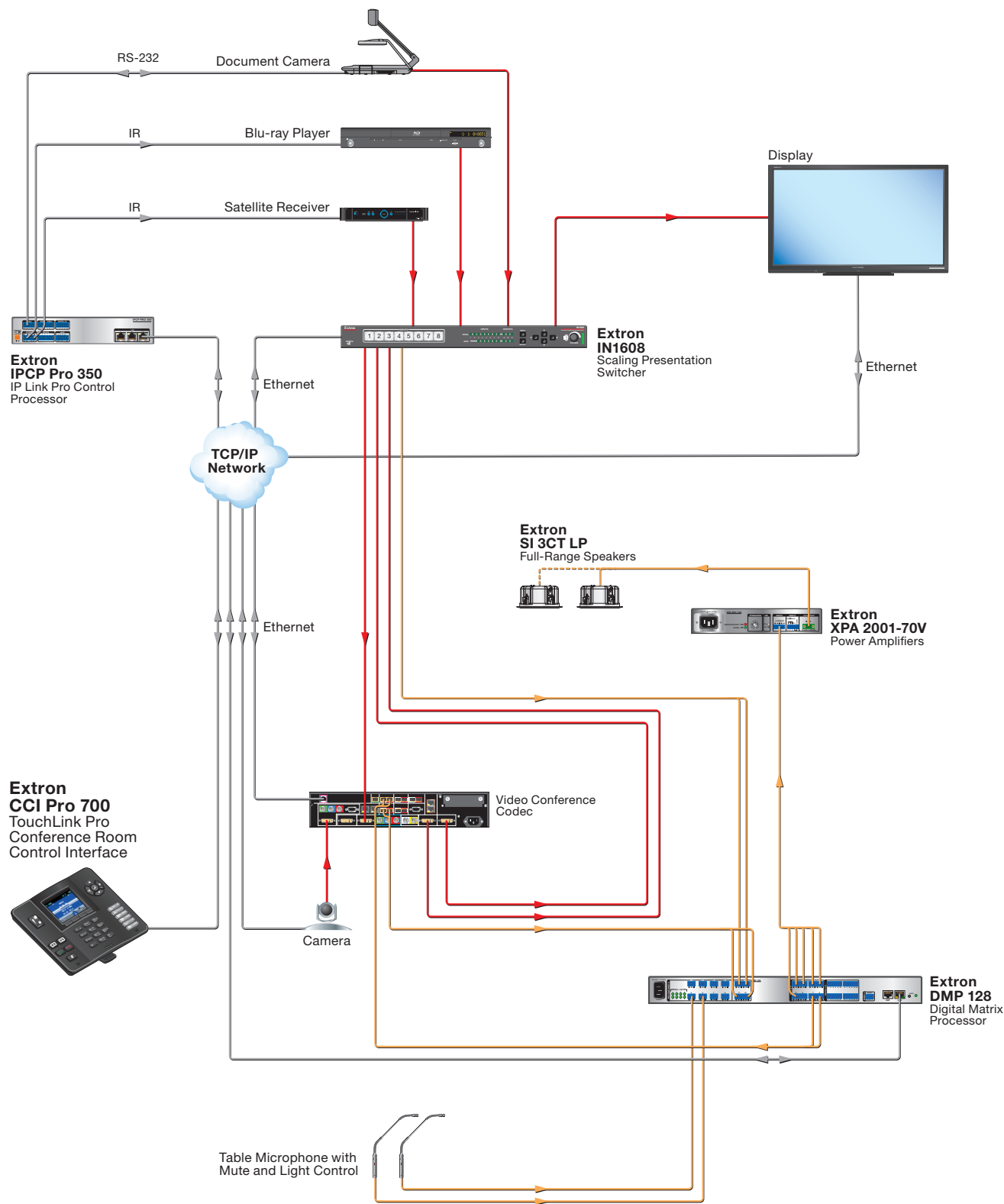
The Extron Custom Button Builder provides convenient and simple customization of the CCI Pro 700 soft-touch, backlit buttons. This dynamic online tool features a graphical representation of the product's button layout and a button configurator pane with many options for easy edits.

Customize Text Then Edit or Print Your Bill of Materials

Buttons can be customized with a combination of text and symbols, then, when you are finished, the Custom Button Builder will create a Bill of Materials that summarizes all of your custom buttons and shows the price totals. You can use this itemized BOM for approvals, then generate an Extron part number for easy ordering and tracking.



MEDIUM CONFERENCE ROOM WITH HARDWARE CODEC



Overview

Ambient Light Sensor

Light sensor adjusts screen brightness and button backlight as the ambient room lighting changes

Customizable 3.5" color information display

Easily readable screen can be configured to provide a broad range of information to the user

Dual color LED status indicator

Provides visual feedback for a broad range of applications

Volume button

Provides a means to control system volume

Context buttons

Quickly select system functions

Mode buttons

Control of common conferencing and collaboration functions

Dial buttons

On-hook and off-hook controls

Microphone mute button

Provides a means to mute a microphone in the system

Numeric keypad

Standard 12 button

Power saving motion sensor

Controls sleep and run modes

Navigation buttons

Easily navigate through on screen menus or functions

Power over Ethernet

Power and control over a single Ethernet cable

Six backlit, soft-touch function buttons

Customize the button functions and labeling configuration for each conferencing and control application using the Extron Custom Button Builder.



Convenient information tray for easy access to reminders or system information



Titled base provides optimum angle for viewing and user interaction



Conference Control

+



Collaboration

+



Room Control

+



Camera Presets

+



Frequent Contacts

=

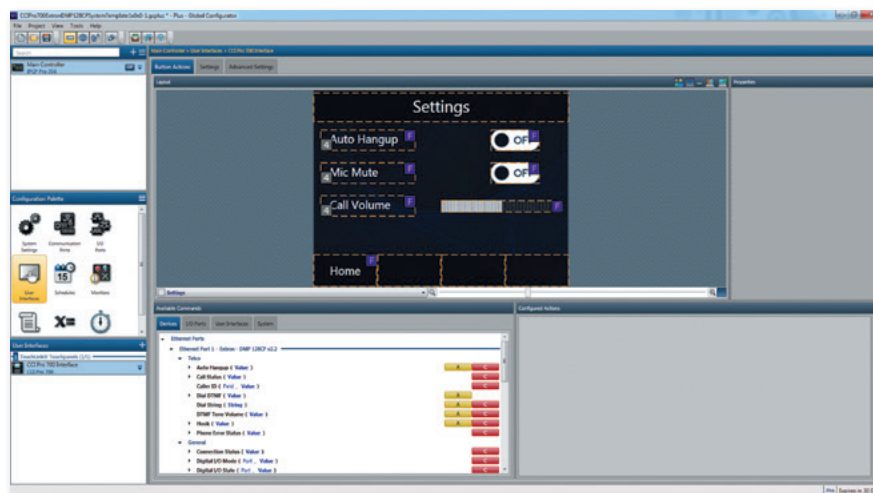


Extron
CCI Pro 700
TouchLink Pro
Conference Room
Control Interface

System Templates

Free, professionally-designed System Templates for audio conferencing provide a starting point for configuration with downloadable GC Plus files that include GUI layouts using the Turbulence Theme and sample system logic.

Extron DMP 128 C P System • Biamp Audia/Nexia System • Biamp Tesira System • ClearOne Converge Series • Polycom SoundStructure
Polycom HDX 9000 • Cisco SX20 or SX80 • Cisco C40, C60, or C90 • Polycom Group • Lifesize Team • Starleaf Telepresence



Extron DMP 128 C P System Template – Setting Screen

SPECIFICATIONS

DISPLAY	
Screen type	Active matrix TFT color display
Size	3.5" (8.9 cm), measured diagonally
Resolution	320x240
Aspect ratio	Standard
Color depth	24 bit
Contrast	350:1
MEMORY	
SDRAM	512 MB
Flash	512 MB
COMMUNICATION — ETHERNET INTERFACE	
Ethernet data rate	10/100Base-T, half/full duplex with autodetect
Ethernet protocol	DHCP, DNS, HTTP, HTTPS, ICMP, SFTP, SSH, TCP/IP, UDP/IP
External buttons	30 backlit, 6 customizable, 4 context-dependent buttons
AUDIO OUTPUT	
Speaker output	2 mono, 86 dB SPL, 0.1 watt, 0.1 m, half space
Playback format(s)	
Container format	WAV (Microsoft RIFF)
Encoding	LPCM (uncompressed)
Bit depth	Unsigned 8-bit, signed 16-bit, signed 24-bit, signed 32-bit
Sampling rate	2 kHz to 192 kHz
Audio channels	Mono

GENERAL		
Power supply	Not included	
Power input requirements	Power over Ethernet (PoE 802.3af, class 3)	
Device and power injector	10.7 watts	
Temperature/humidity	Storage: -4 to +140 °F (-20 to +60 °C) / 10% to 90%, noncondensing Operating: +32 to +122 °F (0 to +50 °C) / 10% to 90%, noncondensing	
Device and power injector	36.3 BTU/hr	
Mounting		
Furniture or wall mount	Set on tabletop	
Enclosure dimensions	3.45" H x 7.87" W x 6.75" D (8.9 cm H x 20.1 cm W x 17.3 cm D) (Includes base)	
Regulatory compliance		
Safety	CE, c-UL, UL	
EMI/EMC	CE, C-tick, FCC Class A, ICES, VCCI	
Environmental	Complies with the appropriate requirements of RoHS and WEEE.	
Warranty	3 years parts and labor; touchpanel display and overlay components are covered for 1 year	
Model	Version Description	Part number
CCI Pro 700	Conference Control Interface	60-1206-02
Optional Accessories		
Model	Version Description	Part number
XTP PI 100	Single Port Power Injector	60-1233-01

For complete specifications, please go to www.extron.com
Specifications are subject to change without notice.

WORLDWIDE SALES OFFICES

Anaheim • Raleigh • Silicon Valley • Dallas • New York • Washington, DC • Toronto • Mexico City • Paris • London
Frankfurt • Madrid • Stockholm • Amersfoort • Moscow • Dubai • Johannesburg • Tel Aviv • Sydney • Melbourne
Bangalore • Mumbai • New Delhi • Singapore • Seoul • Shanghai • Beijing • Hong Kong • Tokyo

www.extron.com