

Cable Cubby 1252 MS

SURFACE-MATCHING ENCLOSURE FOR
AV CONNECTIVITY, REMOTE CONTROL, AND POWER



The Extron Cable Cubby 1252 MS is an elegant cable access enclosure for AV connectivity, control, and power. The lid serves as a mounting base for wood, stone or other surface-matching material. The bezel-free design allows for a clean, seamless finish in tables, lecterns, and other furniture. The Cable Cubby 1252 MS is a customizable solution that provides convenient access to control and power in an elegant form factor that complements high-end furniture.

- ▶ Unique design virtually disappears into furniture
- ▶ Height-adjustable enclosure accommodates surface thickness for a flush installation
- ▶ Integrated lid serves as a mounting base for wood, stone, or other surface-matching material
- ▶ Optional Cable Cubby 1252 MS Lid Tray Kit surrounds the cut material for a clean and professional finish
- ▶ Lid damper ensures smooth, quiet operation
- ▶ Allows cable pass-through when lid is closed
- ▶ Compatible with ZipClip® and PMK 155 mounting kits for discreet installation of AV components
- ▶ Cable Cubby 1252 MS requires precision table cutting and professional carpentry skills for proper integration

Discreet AV Access that Blends into Sophisticated Environments



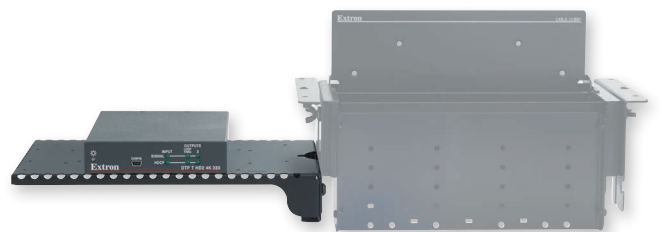
Material removed from the furniture opening can be attached to the lid. The height-adjustable design allows the top of the enclosure to sit flush with the furniture surface, making it ideal for installation in high-end environments.



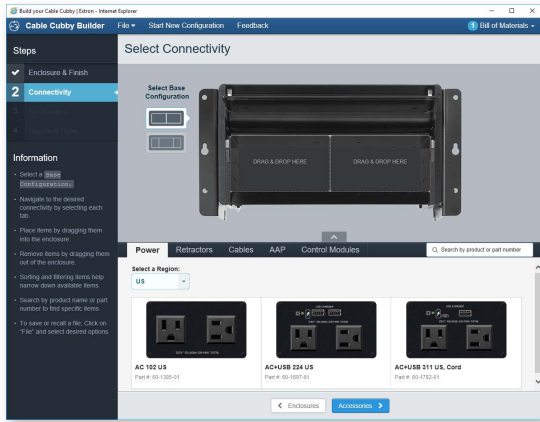
The Cable Cubby 1252 MS blends perfectly into the table surface when closed. The cable pass-through slot allows the enclosure to be nearly imperceptible, even when in use.



In addition to AV connections, the enclosure can also provide AC and USB power. Power modules are available for US, Europe and other major world markets.



The Extron PMK 155 mounting kit enables quick and flexible installation of select Extron products below a table's surface. It is an optional accessory for the Cable Cubby 1252 MS Enclosure.

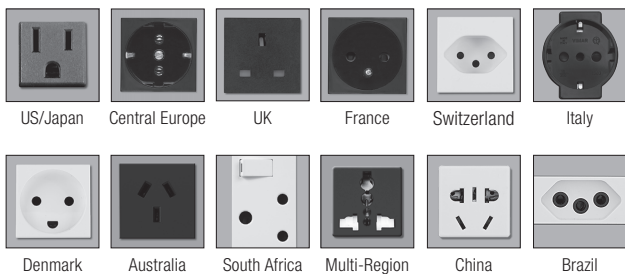


The Extron **Cable Cubby Builder** is an interactive online tool for designing and customizing Cable Cubby Series cable access enclosures. After selecting the Cable Cubby enclosure and finish, an intuitive drag-and-drop interface makes it easy for users to add power, cables, Retractor modules, AAP AV connectivity modules, and installation accessories. It automatically assembles a Bill of Materials and gives users an opportunity to make changes before placing an order. Access it at extron.com/ccbuilder.

ADDITIONAL FEATURES

- ▶ Accommodates an AC or AC+USB Power Module, plus up to three Retractor modules, eight AV cables, and/or three AAP™ AV Connectivity Modules
- ▶ Retractor, Cable Pass-Through, and AAP Brackets included; modules and cables sold separately
- ▶ Retractor Bracket holds three Retractor Series or Retractor Series XL cable retraction modules
- ▶ Cable Pass-Through Bracket supports up to eight AV cables
- ▶ Connectivity Bracket supports up to three single-space AAP modules
- ▶ Cable Cubby 1252 MS enclosure is CE compliant, and optional US AC outlets are UL/c UL listed

AVAILABLE POWER OUTLETS



GENERAL		
Mounting		
Furniture mount	Yes, underneath the furniture surface	
Min./max. table thickness	0.25" to 2.4" (6.4 mm to 61 mm)	
Enclosure type	Metal	
Enclosure dimensions		
Top plate (outer rim)	11.0" L x 5.66" W (279.4 mm L x 143.9 mm W)	
Enclosure depth (excluding mounting brackets and lid)	4.32" H (109.8 mm H)	
Surface cutout (lid equal to or thicker than table)	8.81" L x 5.25" W with 0.25" radius corners (223.8 mm L x 133.4 mm W with 6.4 mm radius corners)	
Surface cutout (lid thinner than table)	9.5" L x 5.25" W with 0.25" radius corners (241.3 mm L x 133.4 mm W with 6.4 mm radius corners)	
Lid (attached directly to enclosure)	8.56" L x 4.44" W with 0.2" radius corners (217.4 mm L x 112.8 mm W with 5 mm radius corners)	
Min./max. lid thickness	0.20" to 0.82" (5.1 mm to 20.8 mm)	
Lid tray	Aluminum	
Lid tray dimensions		
Lid tray	8.56" L x 4.44" W x 0.82" (217.4 mm L x 112.8 mm W x 20.8)	
Lid insert (installed in the lid tray kit)	8.375" L x 4.25" W with 0.12" radius corners (212.7 mm L x 107.9 mm W with 3 mm radius corners)	
Max thickness	Up to 0.70" (17.7 mm)	
Enclosure	4.6 lb (2.1 kg)	
Lid tray	0.6 lb (0.3 kg)	
Regulatory compliance	CE, WEEE, Complies with the appropriate requirements of RoHS	
US configuration*	c-UL, UL	
Product warranty	3 years parts and labor	
NOTE: * The UL listing for this product is only valid when the Cable Cubby contains the US AC power module.		
Model	Version Description	Part number
Cable Cubby 1252 MS	Matching Surface Enclosure; Black- AC Not Included	70-1273-01
Lid Tray Kit	For Cable Cubby 1252 MS; Black Anodized Aluminum	70-1275-01
Optional Accessories		
Model	Version Description	Part Number
CableCover – Large	For Cable Cubby 1252 MS	70-1080-02
PMK 155	1U, 1/2 Rack Width Mounting Kit	70-739-12
ZipClip 100	Mounting Kit for PS Power Supplies	101-002-01
ZipClip 200	Mounting Kit for 1/8 and 1/4 Rack Width Products	101-001-01
CCM 155	Mounting bracket for Flex55 and EU modules	70-1164-01
Connectivity Bracket Kits	For cables, AAP, and Retractor modules	various
AC 100 Series	Up to two AC power outlets	various
AC+USB 200 Series	Up to two AC and two USB Type-A outlets	various
AC+USB 300 Series	Up to two AC, one USB Type-A, and one USB Type-C outlets	various
Retractor Series	Cables extend up to three feet (90 cm)	various
Retractor XL Series	Cables extend up to five feet (152 cm)	various

For complete specifications, please go to www.extron.com
Specifications are subject to change without notice.

WORLDWIDE SALES OFFICES

Anaheim • Raleigh • Silicon Valley • Dallas • New York • Washington, DC • Toronto • Mexico City • Paris
London • Frankfurt • Madrid • Stockholm • Amersfoort • Moscow • Dubai • Johannesburg • Tel Aviv • Sydney
Melbourne • Bangalore • Mumbai • New Delhi • Singapore • Seoul • Shanghai • Beijing • Hong Kong • Tokyo

www.extron.com