



# Architectural AV Solutions

Elegant Design in Functional Spaces

**Extron**





# Enhance the User Experience

Extron products play an important role in reinforcing communication. They empower learning, facilitate collaboration, and enhance any space's ambience. Each day, AV system designers and integrators around the world incorporate any number of Extron's 5,000 products to create ideal solutions for small spaces such as conference and classrooms, up to the largest command and control center.

We recognize that architects, interior designers, and their industry partners hold a leadership role in selecting the components that complete an environment. Extron is by your side with AV and power technology in architectural form factors that precisely blend into every setting.



## Sound

Architecturally discreet, paintable speakers harmonize with the environment while augmenting speech intelligibility and delivering high performance music playback.



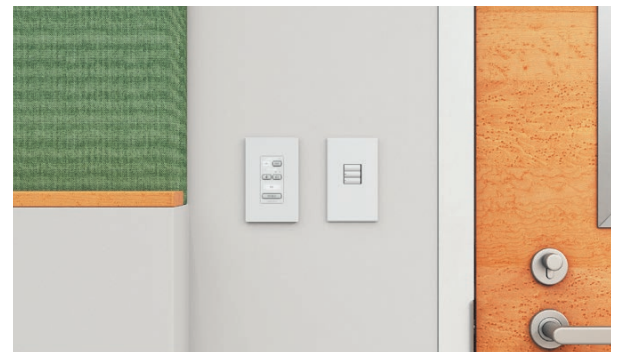
## Control

Elegantly designed surfaces and intuitive interfaces enhance the user experience.

## AV Connectivity

Tabletop cable management systems keep cables available yet out of sight when not in use.





# Control

System control is an important element for any AV system. System operation should be dependable, intuitive, and integrate cleanly into the space's design. For some applications, a simple control interface with a few buttons is sufficient. Other applications require access to a wider variety of control options and are better served by a touchpanel presenting a graphical user interface.

Extron offers a comprehensive selection of control interfaces to meet any need. Options range from small, physical button panels to large, customizable touchpanels that provide full room control. Complete interactivity is just a touch away, including sound level, video switching, lighting, and power control of AV devices.



## Furniture and Wall Mountable Touchpanels

Touchpanels make complex AV systems easy to use. Extron TouchLink® Pro touchpanels are available in a variety of sizes, form factors, and finishes.

- Screen sizes from 3.5" to 17"
- Tabletop, wall mount, and furniture mounted options
- Stylish designs and finishes such as black anodized and brushed aluminum



## Simplified Wall Mounted Control

Sometimes a few buttons are sufficient to control a room's functions. Sleekly designed tactile button panels provide the perfect combination of form and function. Facilitating access to basic system operation, the panels feature customizable buttons that are easy to use and configure.



## Room Scheduling

Room scheduling panels provide a convenient interface that allows users to reserve meeting spaces. These glass or wall-mount touchpanels are available in black or white and simplify the room booking experience without detracting from the space's appearance.





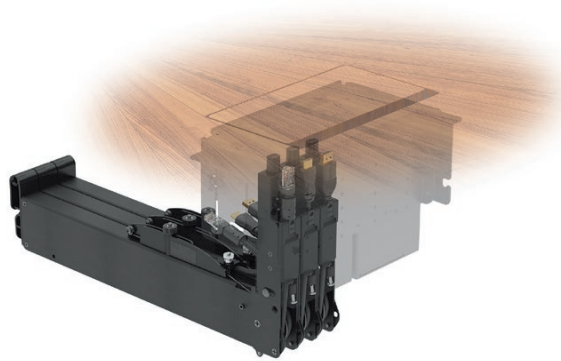
# AV Connectivity

A well-designed and integrated AV system blends seamlessly into the room. To simplify the challenge of creating a “hidden in plain sight” yet functional AV system, Extron offers hundreds of architectural connectivity products that maintain a clean and efficient system design. These products provide connection points for video, audio, data, control, and power while blending in with the aesthetics of a modern business or learning facility.



## **Cable Cubby and Hideaway Enclosures**

Cable Cubby® and Hideaway® enclosures provide access to AV, control, and power connections in tables, lecterns, or other furniture. These flush-mountable enclosures blend seamlessly with any furniture and room décor. Available with black anodized, brushed aluminum, and surface-matching finishes, they complement any room or furniture style, while keeping connections out of sight when not in use.



## **Cable Retractors**

Cable Retractors are patented retraction systems that eliminate unsightly tangles of cables from work surfaces, ensuring meetings are not delayed due to misplaced cables. They manage cables above and below the table, keeping them organized and ready at hand. When a connection is no longer needed, the press of a button smoothly pulls back the cable, storing neatly out of sight until needed again.



## **Wallplates**

Wallplates facilitate the convenient placement of AV connectivity and control on a wall or similar flat surface. These versatile products enable connectivity wherever it is needed, whether along a floorboard, behind a display, or easily accessible near a presenter.







# Sound

High-quality sound is a critical part of any communication experience. Extron offers a range of speakers that can fill a room with sound without compromising the visual integrity of the space. Extron speakers are available in multiple form factors, including pendant, soundbar, in-ceiling, and surface mount. These options let you decide on the best solution for each environment. Many speakers are available in black, white, or a paintable surface to match any surrounding.



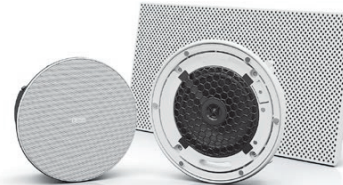
## Pendant Speakers

Extron's SoundField® Pendant Speakers are ideal for high-ceiling and open-ceiling applications, providing exceptional sound quality and coverage. The support cable and speaker wires are encapsulated within a single jacket for an architecturally clean design. Taking inspiration from modern pendant lighting, these patent-pending speakers complement the aesthetic of contemporary interiors.



## Soundbar

Extron's sound bar is an under-display solution for enhancing the audio experience in collaboration spaces. It features an adjustable-width enclosure that can be customized to precisely match the width of the display and can accommodate cameras for videoconference applications.



## In-Ceiling Speakers

Extron ceiling speakers are engineered for optimum sound quality and ease of installation without sacrificing visual appeal. They feature square and round paintable grilles and bezels to match any environment. The Flat Field® family of drop-in ceiling tile speakers mimic the look of a vent and provide full-range room coverage using half the number of speakers than traditional ceiling speakers.



## Surface Mount Speakers

Available in black or white, Extron surface-mount speakers eliminate visible speaker cables via direct connection between the speaker and the mount. With all cabling hidden, this innovative solution provides a clean, wire-free appearance.







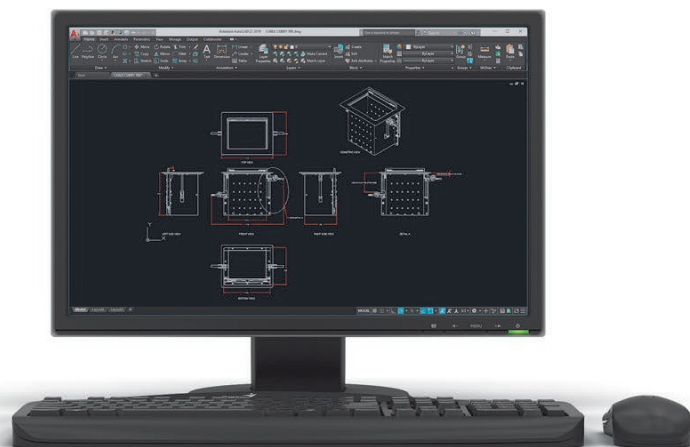
# Style, Functionality, and Versatility for Every Environment

## Diverse Spaces

Extron provides integrated audiovisual solutions that complement the full range of environments you create, from huddle spaces, meeting rooms, and classrooms to entertainment venues, control centers, medical facilities, and more. Our advanced technologies enhance the user experience, facilitating better looking images, higher quality sound, and systems that are absolutely reliable and easy to control.

## Extron Support Program for Architects

Our Architect Support Program provides access to optimized, efficient Autodesk® Revit® BIM modeling files, AV system CAD blocks and drawings, and Architectural & Engineering specifications, as well as personalized technical design support. Contact us today for assistance with your current projects.



## Sustainability

Extron products and technologies are internationally recognized for their contributions to reduced energy consumption and waste. Our GVE AV resource management program can send global power-off commands to displays and source equipment at predetermined times. An Extron control system with a room occupancy sensor ensures that the AV system is powered down when the room is not in use. Also, our ENERGY STAR® qualified audio amplifiers draw less than one watt in standby mode. Extron continues to lead the industry in sustainability practices and designing innovative products that contribute to LEED certification in buildings the world over.



## Unequaled Power Efficiency

Extron products feature Everlast™ power supplies, which are designed and manufactured in house. They exceed the highest, Level VI requirements for energy efficiency. This helps the installation meet green building regulations by lowering power consumption and reducing overall operating costs.





# Extron

[www.extron.com/elegantdesign](http://www.extron.com/elegantdesign)