

MICROSOFT TEAMS ROOMS COLLABORATION SYSTEMS

APPLICATION GUIDE



Extron and  **poly**

Delivering Scalable Meeting Experiences for Any Space

Through our partnership with Poly, we are developing scalable integration options for Extron control systems, audio devices, and signal switching for Poly Room Solutions for Microsoft Teams Rooms® and Zoom Rooms™. Together, Extron and Poly are poised to deliver complete AV and conferencing control across the enterprise. As one of our first developments, a simple tap on the Poly GC8 touchpanel can manage the meeting experience as well as send commands that trigger automation events for display power, shades, lighting, and more. Working together, Extron and Poly are committed to providing scalable, innovative meeting experiences for any space.

Key Features

- Effortlessly combines Poly meeting room products with Extron's powerful AV device control for an ideal Microsoft Teams Rooms, Zoom Rooms, or BYOD meeting experience
- Enables scalability of Poly conferencing products to large and customized room environments with easy integration of AV switching, extension, signal distribution, and cable management
- Provides room automation and touchless control of AV devices, lighting, and shades with room occupancy sensors
- Enable multi-platform conferencing
- Sound reinforcement for large rooms with ceiling speakers for optimum coverage
- Consistent user experience across the enterprise while accommodating the needs of a wider variety of meeting rooms types and technologies





AUTOMATED HUDDLE ROOM – PAGE 4

A simple huddle room with automated controls. The occupancy sensor will automatically trigger the system to switch on the display in the huddle room so no buttons need to be touched.



CONFERENCE ROOM WITH SWITCHING AND CONTROL – PAGE 6

A conference room with advanced control capabilities, which can be used for collaboration, presentations, and video conference calls. The Poly GC8 touchscreen provides a single point of control for Microsoft Teams Room conferencing control and AV room control.



CONFERENCE ROOM WITH MULTI-PLATFORM SUPPORT – PAGE 8

Conference room that is firstly equipped for Microsoft Teams Room conferencing but is also multi-platform capable, supporting BYOD conferencing, running the conferencing client of choice.



LARGE CONFERENCE ROOM WITH PRO AUDIO SYSTEM – PAGE 10

Conference room with audio system with full-range, ceiling mounted speakers for sound reinforcement ensuring an optimum room coverage for all participants.



TRAINING ROOM WITH PRO AV SOURCES – PAGE 12

A training room with a professional camera and microphone to be integrated with a Microsoft Teams Room.



LARGE CONFERENCE ROOM – PAGE 14

Large conference room with dual displays, multiple cameras, multiple connection points for laptops and an enhanced audio system for optimal coverage



PROFESSIONAL UNIFIED COMMUNICATIONS STUDIO – PAGE 16

A Professional Unified Communication Studio enhancing the capabilities of a standard Teams Room system with multi-source seamless switching, multiple window lay out, chroma keying, logo insertion and wireless camera and mic support for mobile presenters.



FINDING AVAILABLE MEETING SPACES – PAGE 18

Room scheduling solution with a wayfinding interface that provides real-time meeting space availability, status, location information, and health and safety information using a centralized display.

AUTOMATED HUDDLE ROOM

Requirements

A simple huddle room with automated controls. An occupancy sensor will be used to automatically switch on the display in the room and select the correct input via RS-232, IR, or CEC – no buttons need to be touched. Connectivity for the USB-C laptop and cable management is offered with the Cable Cubby 100.



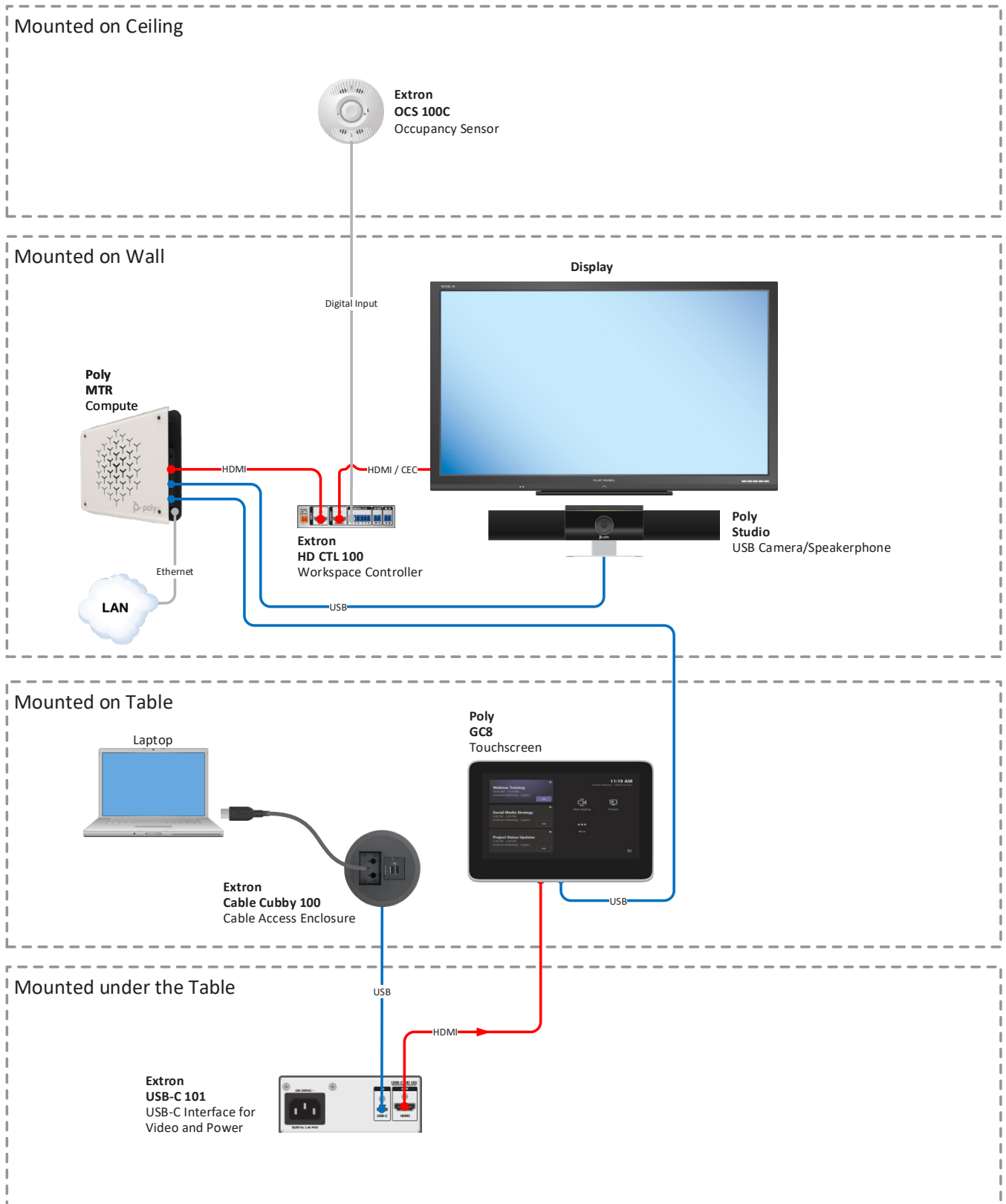
Extron Equipment List

- **HD CTL 100** – Workspace Controller
- **OCS 100C** – Occupancy Sensor
- **Cable Cubby 100** – Cable Access Enclosure for AV Connectivity and Power
- **USB-C HD 101** – USB-C to HDMI Interface

Capabilities

- Connectivity for USB-C Laptop
- Single USB-C cable for video and power (60 W)
- Automatic control of display power via presence detection
- Reliable control of any display via RS-232, IR, or CEC
- Allow for connections with a variety of devices, such as door sensors, switches, and relays to control room light or shades
- Extron Cable Cubby 100 provides easy access to cables and AC power or USB charging with an elegant, finished appearance

System Design



CONFERENCE ROOM WITH SWITCHING AND CONTROL

Requirements

Conference room with advanced control capabilities that can be used for collaboration, presentations, and video conference calls. This system supports connection of two HDMI sources, one USB-C source and one DisplayPort source at the table. The Poly GC8 touchscreen provides a single point of control for Microsoft Teams Room conferencing control and AV room control.



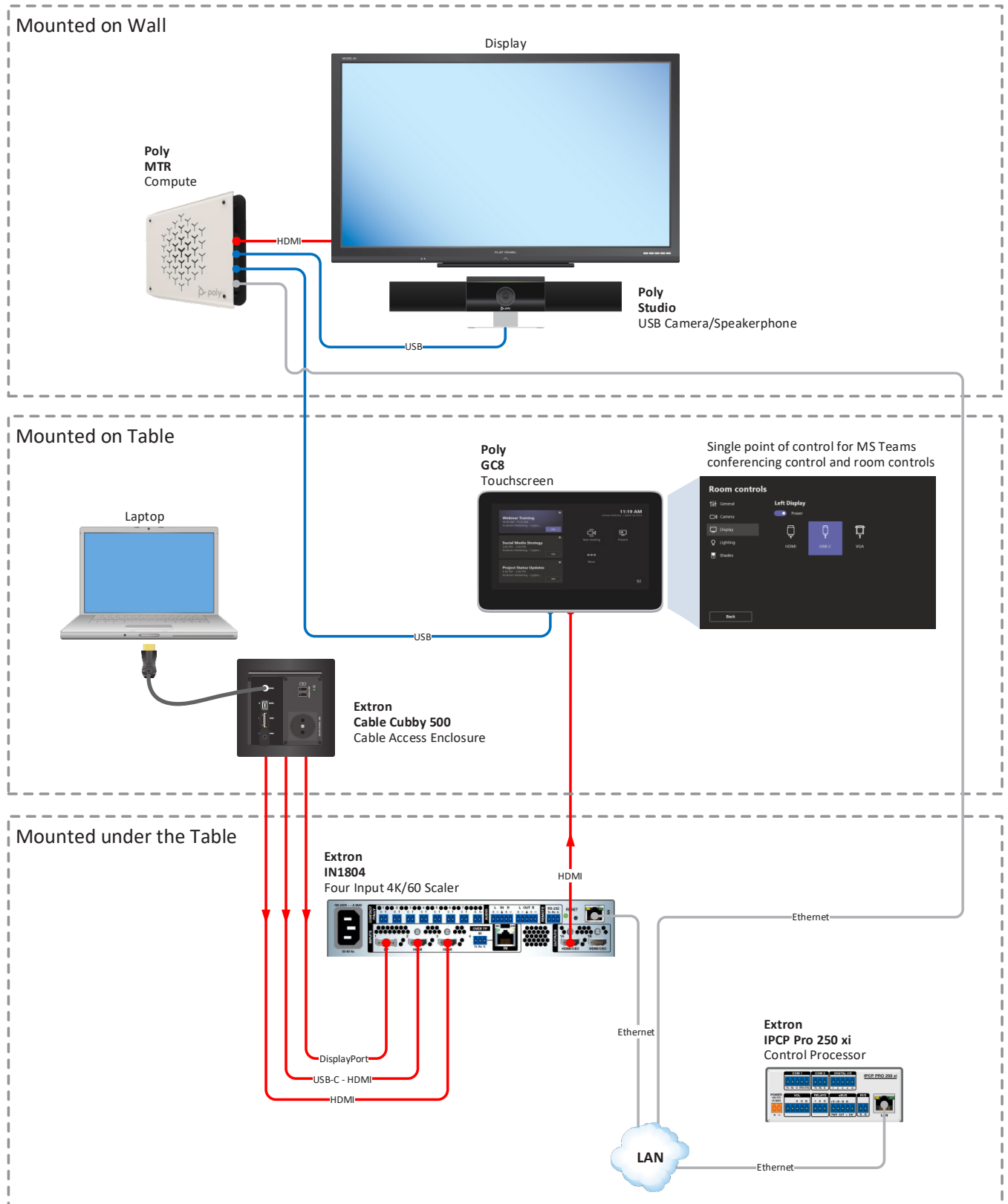
Extron Equipment List

- **Cable Cubby 500** – Cable Access Enclosure for AV Connectivity and Power
- **IN1804** – Four Input 4K/60 Scaler
- **IPCP Pro 250 xi** – IP Link Pro Control Processor with LinkLicense UI upgrade

Capabilities

- Single point of control for source selection and room control, available through the Extron Control for Microsoft Teams Room from the Poly GC8 touchscreen
- Extron Cable Cubby 500 provides easy access to cables and AC power and USB charging with an elegant, finished appearance
- Switch easily between local presentation sources or conferencing
- Supports convenient connection of HDMI, USB-C and DisplayPort-equipped devices
- Extron IN1804 scaler provides professional-quality transitions between sources
- Control for AV functions including power, switching inputs, and volume control
- Provides USB Pan Tilt Zoom camera control

System Design



— USB — Video — Audio — CATx — Control

CONFERENCE ROOM WITH MULTI-PLATFORM SUPPORT

Requirements

This conference room is equipped for Microsoft Teams Room conferencing but is also multi-platform capable, which allows people to walk into the room with their laptop enabling BYOD conferencing, running the conferencing client of choice utilizing both the HDMI and USB cables.



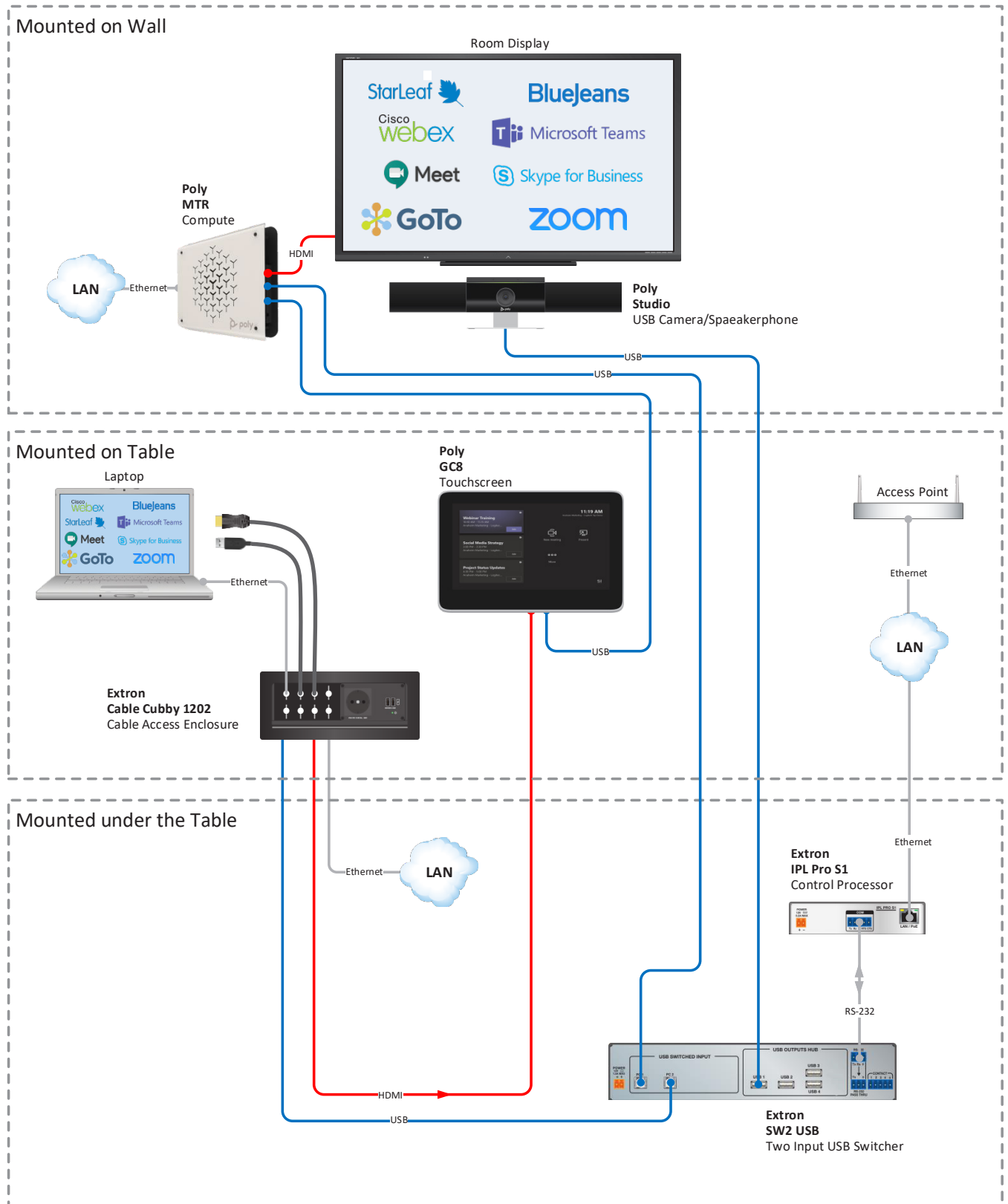
Extron Equipment List

- **SW2 USB** – Two Input USB Switcher
- **IPL Pro S1** – IP Link Pro Control Processor
- **Cable Cubby 1202** – Cable Access Enclosure for AV Connectivity and Power

Capabilities

- Connect with team members using Microsoft Teams with the Poly GC8 Controller
- Multi-platform software conferencing
- Connecting the USB cable to the laptop will automatically switch the USB camera, microphone and speakers to the laptop. Removing the cable will automatically switch it back to the conferencing system.
- Extron Cable Cubby 1202 provides easy access to cables and AC power
- Supports convenient connection of HDMI equipped devices

System Design



LARGE CONFERENCE ROOM WITH PRO AUDIO SYSTEM

Requirements

The large conference room has an audio system with full-range, ceiling mounted speakers for sound reinforcement ensuring an optimum room coverage for all participants. Pro audio processing with acoustic echo cancellation is required for effective room-to-room conversations.



Extron Equipment List

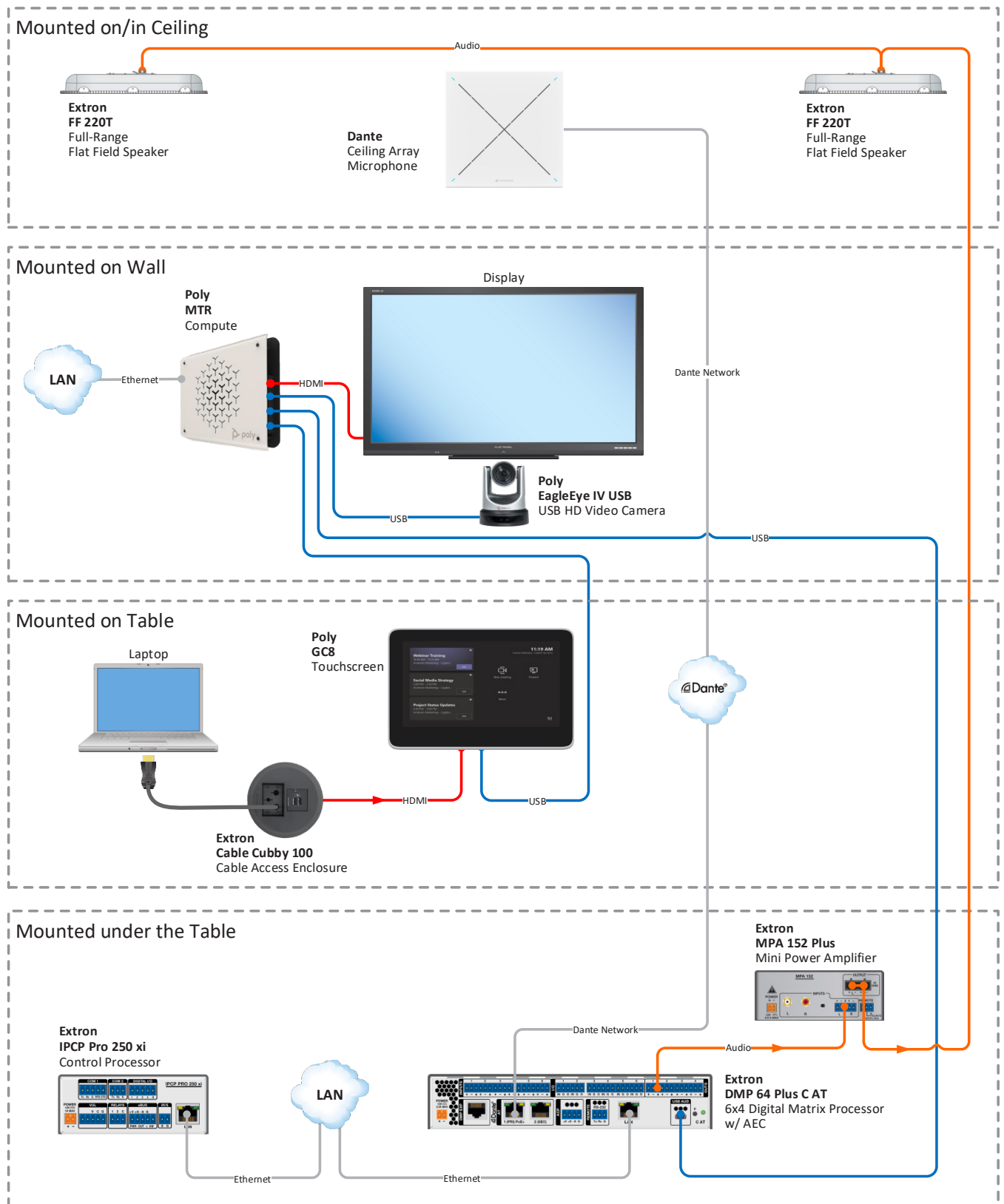
- **Cable Cubby 100** – Cable Access Enclosure for AV Connectivity and Power
- **MPA 152** – Stereo Amplifier - 15 Watts Per Channel
- **FF 220T** – Full-Range Flat Field Speakers, ceiling mounted
- **DMP 64 Plus C AT** – 6x4 ProDSP Digital Matrix Processor with AEC and Dante
- **IPCP Pro 250 xi** – IP Link Pro Control Processor

Capabilities

- Automatic camera control with Dante ceiling tile microphone*
- Enhanced audio quality for collaboration spaces
- Advanced acoustic echo cancellation
- Sound reinforcement with 2 x 15 W amplifier and ceiling speakers
- Extron Cable Cubby 100 provides easy access to cables and AC power

* Supported ceiling microphones include models from Sennheiser and Shure. Other brands may be supported as well, check with your Extron representative

System Design



— USB — Video — Audio — CATx — Control

TRAINING ROOM WITH PRO AV SOURCES

Requirements

A training room with a legacy professional camera and ceiling microphone requires a system upgrade to support remote sessions with Microsoft Teams.



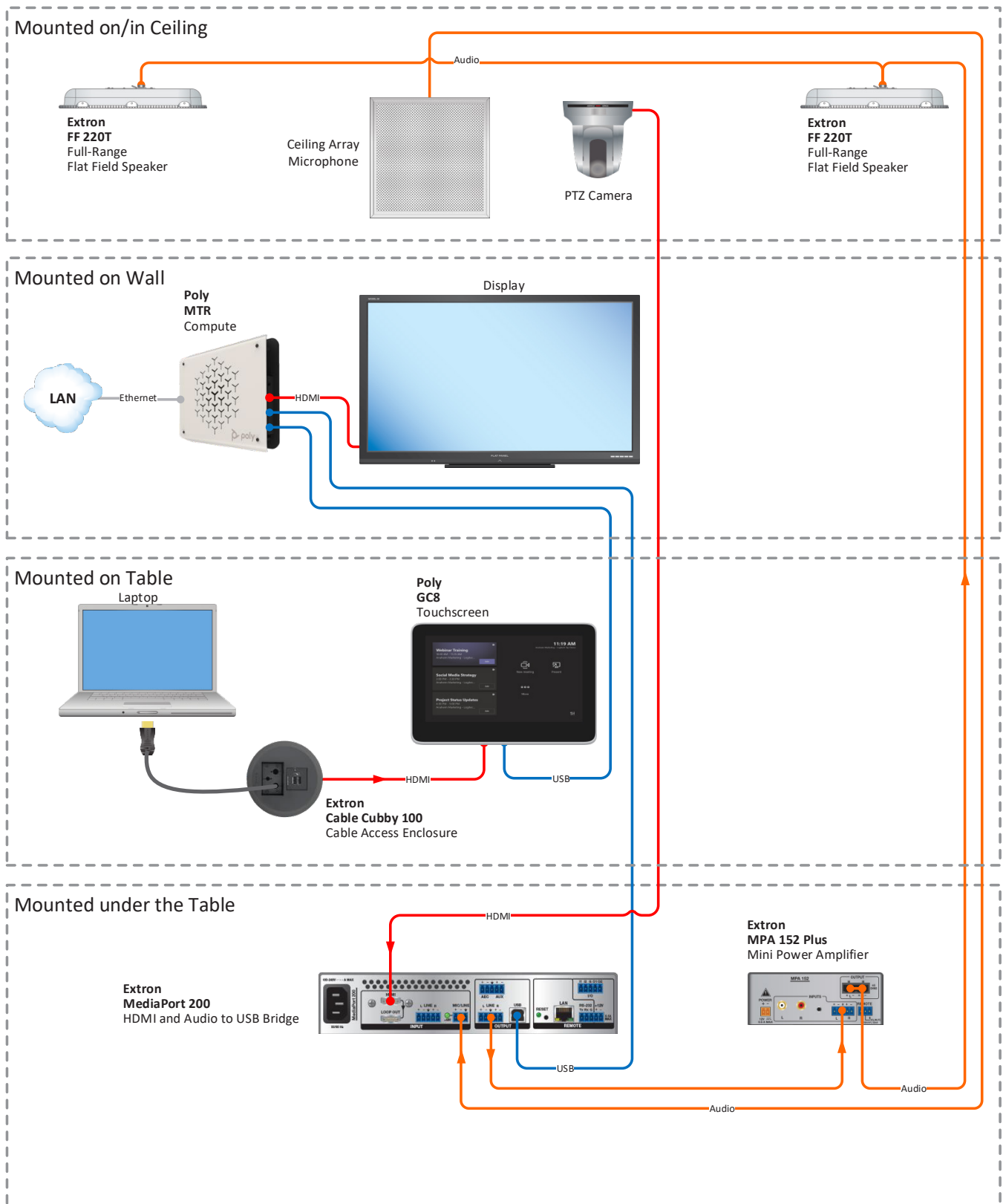
Extron Equipment List

- **Cable Cubby 100** – Cable Access Enclosure for AV Connectivity and Power
- **MediaPort 200** – HDMI and Audio to USB Scaling Bridge
- **MPA 152** – Stereo Amplifier - 15 Watts Per Channel
- **FF 220T** – Full-Range Flat Field Speakers, ceiling mounted

Capabilities

- Seamlessly integrates Pro AV HDMI camera into a software codec application
- Repurpose existing HDMI camera for Microsoft Teams with Extron integrated control
- Advanced Audio Integration with DSP
- Sound reinforcement with 2 x 15 W amplifier and ceiling speakers
- Extron Cable Cubby 100 provides easy access to cables and AC power

System Design



LARGE CONFERENCE ROOM

Requirements

A large conference room with dual displays and two connection points for multiple laptops on the large conference room table. Simple touch screen control for conference and room control. Enhanced audio system with ceiling speakers and ceiling microphone for improved audio quality in larger rooms.



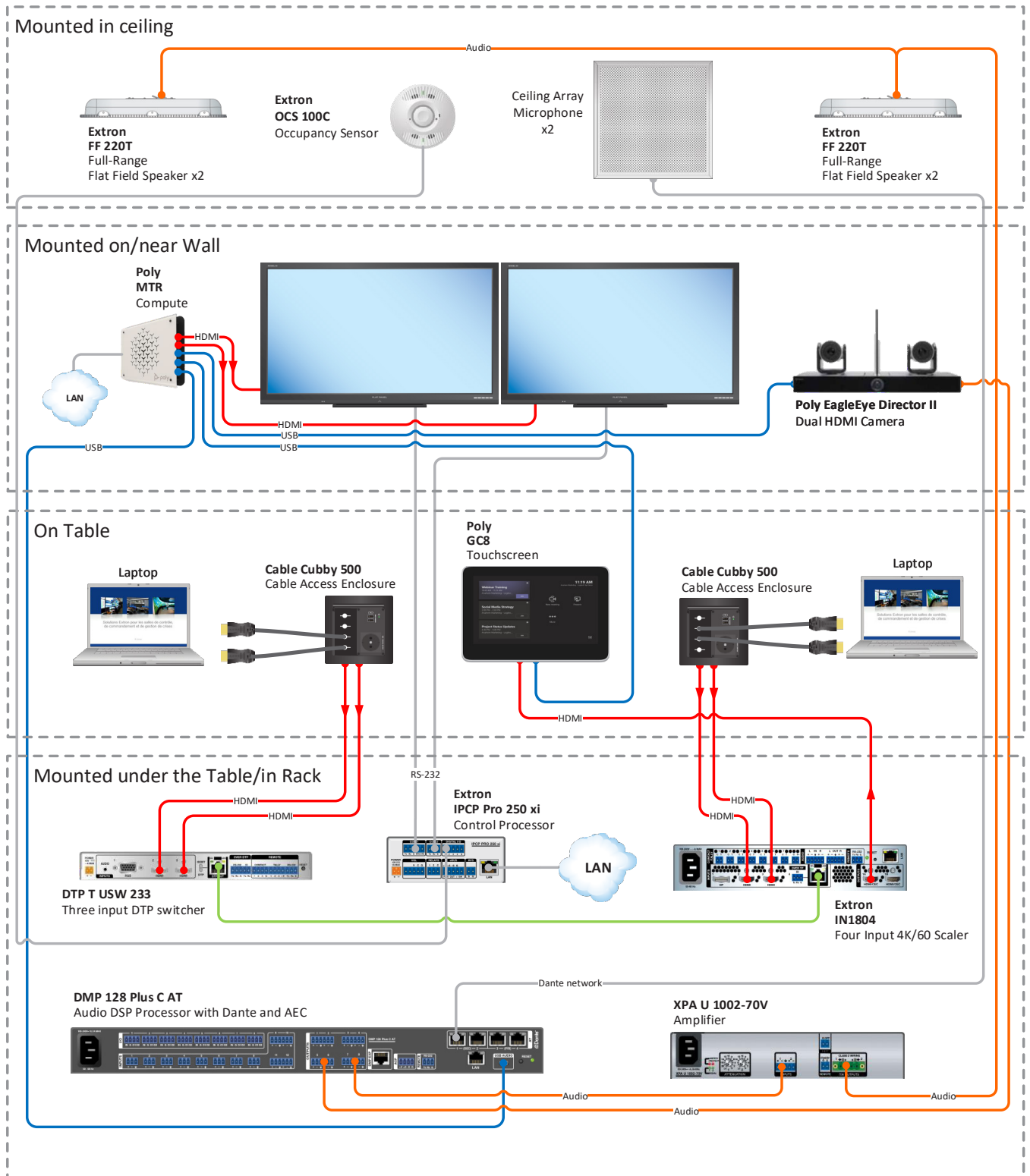
Extron Equipment List

- **IPCP Pro 250 xi** – Control Processor with LinkLicense UI
- **OCS 100C** – Occupancy Sensor
- **DMP 128 Plus C AT** – 12x8 ProDSP Digital Matrix Processor with Dante and AEC
- **XPA U 1002-70V** – Two Channel High Impedance Amplifier, 100W per channel
- **FF 220T** – Full-Range Flat Field Speakers
- **DTP T USW 233** – Three input switcher with DTP transmitter
- **IN1804** – Four Input Seamless Scaling Switcher
- **Cable Cubby 500** – Cable Access Enclosure

Capabilities

- Full customizable touch panel interface offering single point of control
- Automatic control of system power via presence detection
- Seamless switching between all laptops
- Advanced audio system with ceiling speakers and Dante microphones
- Connectivity for four laptops across the conference table

System Design



— USB — Video — Audio — CATx — Control

Requirements

Pro UC Studio provides a production-level Microsoft Teams Rooms experience. Professional presentations and demonstrations can be easily performed with support for advanced capabilities, including multiple sources, cameras, picture-in-picture, and mobile presentation with a wireless camera. Several professional features within Microsoft Teams conferencing must be enabled, such as a multi-windows source layout and seamless switching between several sources and cameras.



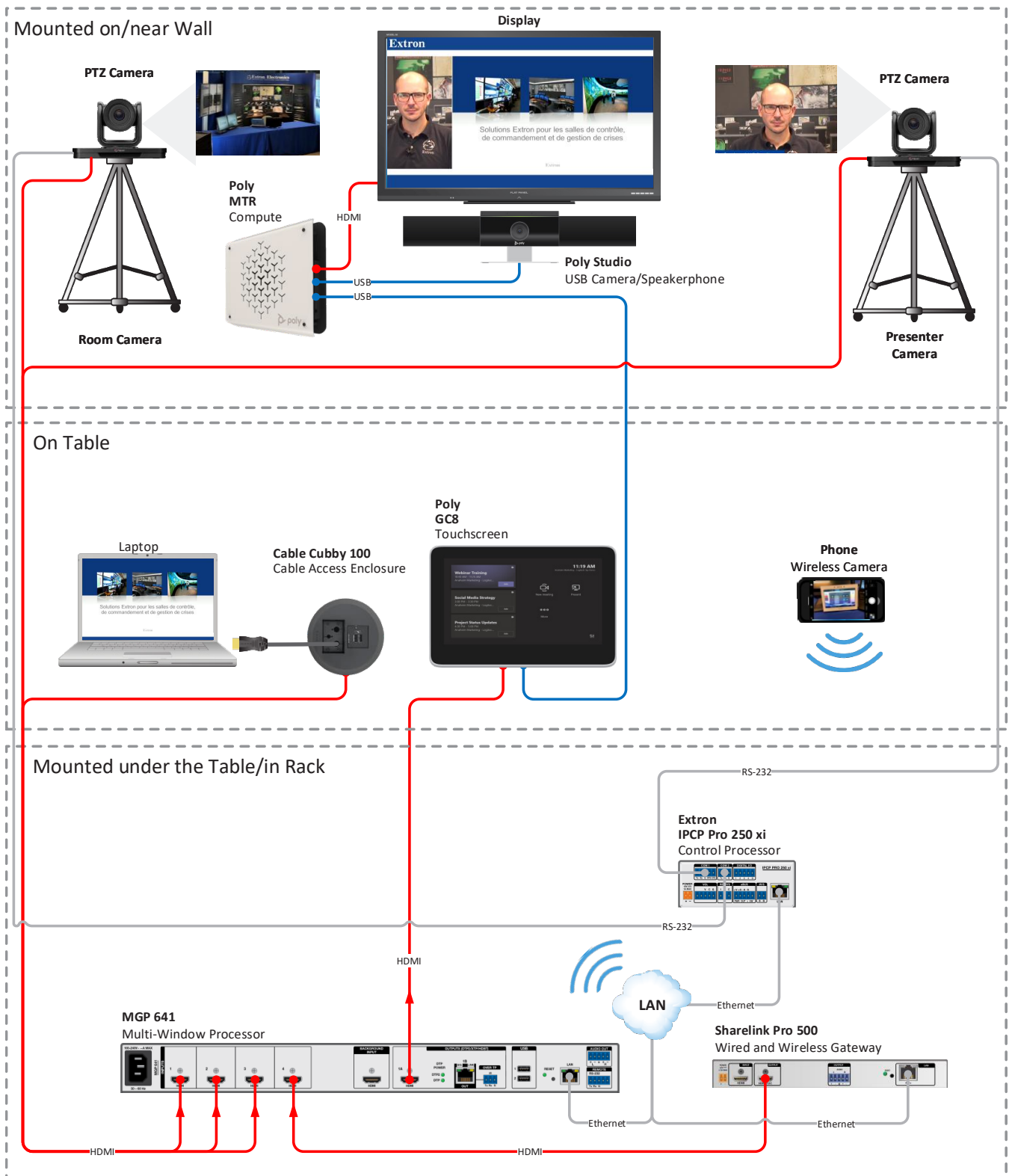
Extron Equipment List

- **IPCP Pro 250 xi** – Control Processor with LinkLicense UI
- **MGP 641** – Multi-Window Processor
- **ShareLink Pro 500** – Wireless and Wired Gateway
- **Cable Cubby 100** – Cable Access Enclosure

Capabilities

- Multiple sources/cameras support integrated in Microsoft Teams
- Full customizable touch panel interface offering single point of control
- Seamless switching between all sources and windows presets
- Flexible Window Management
- Logo Image Keying and Display
- Video Keying
- Use mobile device as wireless camera

System Design



— USB — Video — Audio — CATx — Control

FINDING AVAILABLE MEETING SPACES

Requirements

Room scheduling solution with a wayfinding interface that provides real-time meeting space availability, status, location information, and health and safety information using a centralized display.

Check meeting information from the standalone room scheduling panels that are placed outside of the meeting room to verify that you are at the right place before entering the room. Whether rooms are reserved ad-hoc or scheduled, occupancy sensors ensure that the room is available for others when needed.



Extron Equipment List

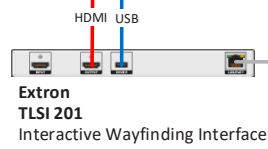
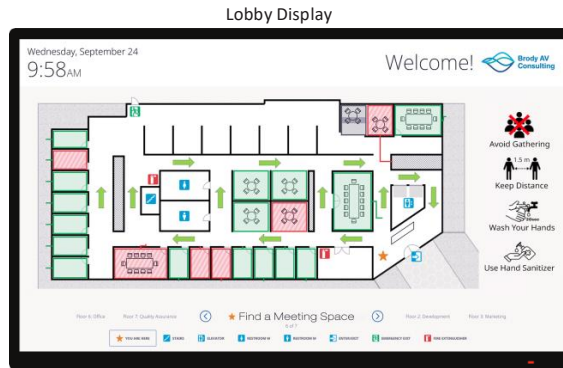
- **TLSI 201** – Interactive Wayfinding Interface
- **TLS 725M** – 7" Wall Mount TouchLink Scheduling Panel
- **OCS 100C** – Occupancy Sensor

Capabilities

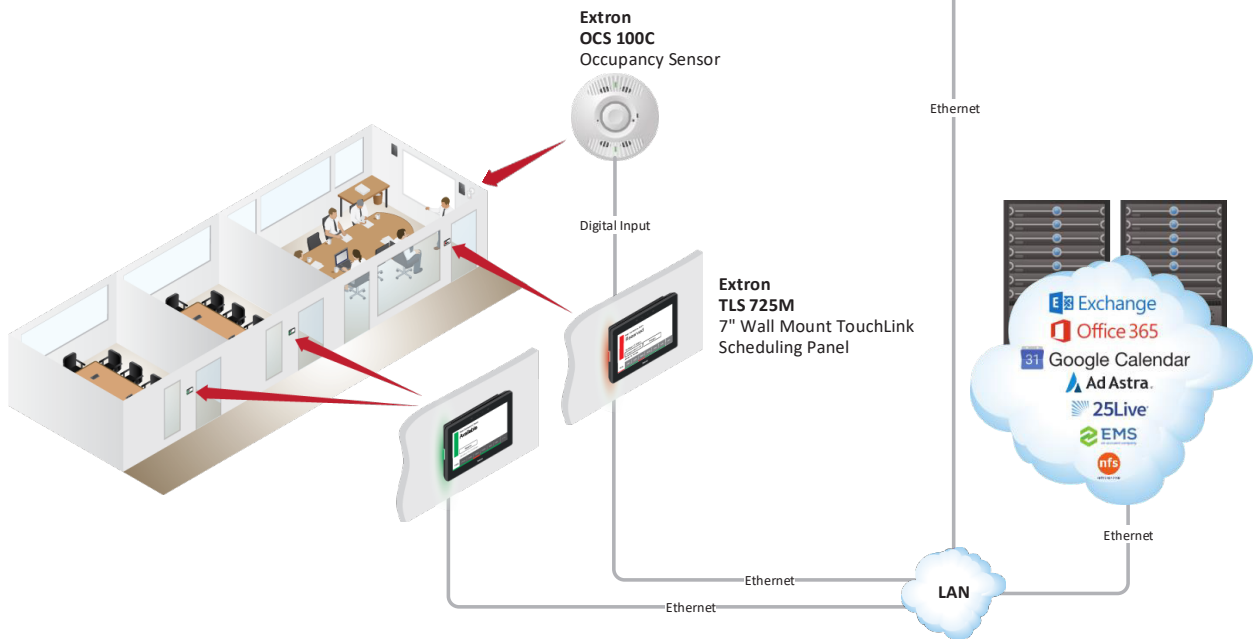
- Easily find and book a meeting space from a centralized location
- View the availability status of a meeting from the central lobby or even from down the hall
- Easily inform customers with health and safety instructions
- Communicate fixed walking routes
- Verify meeting information on the room scheduling panel before entering the room
- Automatically release inactive rooms back to available status
- Create powerful reports to closely analyze room usage and activity patterns

System Design

Central Lobby Area



Conference Rooms





WORLDWIDE SALES OFFICES

Anaheim • Raleigh • Silicon Valley • Dallas • New York • Washington, DC • Toronto • Mexico City • Paris • London • Frankfurt
Madrid • Stockholm • Amersfoort • Moscow • Dubai • Tel Aviv • Sydney • Melbourne • Bangalore
Mumbai • New Delhi • Singapore • Seoul • Shanghai • Beijing • Hong Kong • Tokyo

www.extron.com