

PVT RGB CV MK and PVT RGB MK Installation Guide

The PVT RGB CV MK (2-gang) and PVT RGB MK (1-gang) A/V wall plates for PoleVault™ Systems can be installed in MK junction boxes.

To install either of the devices,

1. Run the A/V input cables (CAT 5/5e/6) from the PoleVault switcher along the raceway or behind the wall to the desired junction box location.

NOTE Two cables (A and B) are needed for the RGB signals, one for composite video.

2. Thread the cables through the back of the junction box and out of the front.
3. Carefully cut off the terminating RJ-45 connector from each cable.
4. Strip the insulator of each cable wire back approximately 0.4" (1.1 cm).
5. Following the wiring diagram and table below, use a Tweezer to press down the spring switch, and insert each wire into its correct location in the connector on the rear panel of the applicable PVT. Release the spring to hold the wire securely in place.

Step 3

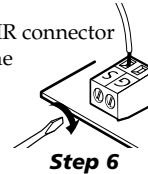
Step 4

Pin	568A Wire Color	RGB Signals		Composite Video Signals	568B Wire Color
		Cable A	Cable B		
1	White-green	Red +	V. sync +	Video +	White-orange
2	Green	Red -	V. sync -	Video -	Orange
3	White-orange	H. sync +	+ 5 VDC	+ 5 VDC	White-green
4	Blue	Green +	Audio L +	Audio L +	Blue
5	White-blue	Green -	Audio L -	Audio L -	White-blue
6	Orange	H. sync -	GND	GND	Green
7	White-brown	Blue +	Audio R +	Audio R +	White-brown
8	Brown	Blue -	Audio R -	Audio R -	Brown

Step 5

PVT RGB CV MK and PVT RGB MK Installation Guide, cont'd

6. Where applicable, connect an IR cable from the MediaLink Controller to the rear IR connector by inserting the signal wire into the hole marked "S", and the ground wire into the hole marked "G" (see inset, step 6).
7. Tighten down the screws.
8. Push all excess wiring into the box.
9. Using the supplied screws, attach the wall plate directly to the junction box.
10. Connect the applicable input device and, where applicable, an IR emitter to the PVT.
11. Power on the input device and the PoleVault switcher.



Step 6

NOTE The PVT wall plate is powered by the PoleVault switcher.

Refer to the "PoleVault System Installation Guide" to complete system installation and setup.

